

6-28-57

Section Corner 7-8-17-18, T30S

R6W, W.N. as det. by O.B.T.

60" Fir N50°E 34.0' O.B.T. fd. scribe

15" La. snag S59°E 16.5' " " "

14" Fir S41°30'W 7.2' " " "

At corner point fd. 4"x4" scribed wood post. I set brass cap in

concrete mkd. T30S R6W

7-8-17-18 2880 1957

from which

6" Fir bears N21W 25.2' mkd. 57 R6W B.T.

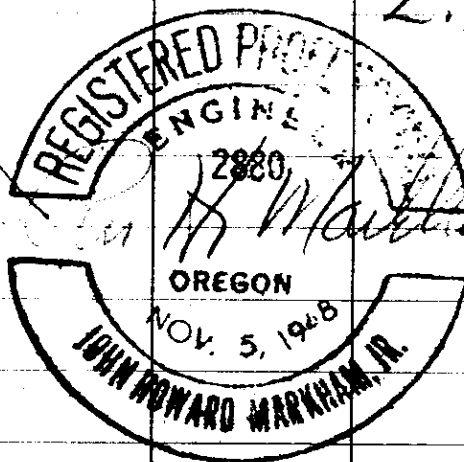
15" Cedar bears N86°W 32.0' mkd. 518 R6W B.T.

11" Fir bears S33°W 18.0' mkd. 518 B.T.

12" Fir S18°30'E 43.6' mkd. 517 B.T.

Witness:

L. H. Morrow

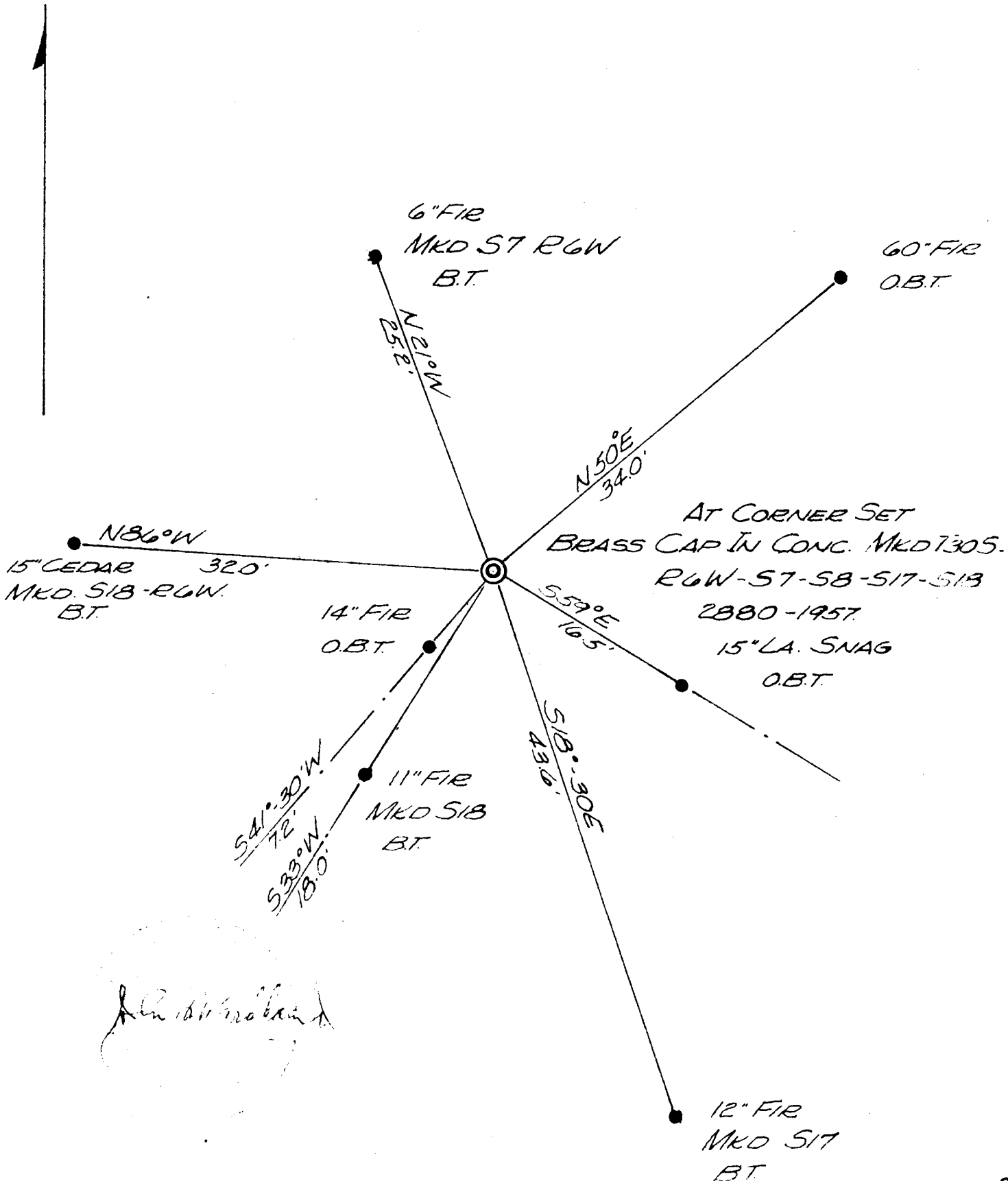


Work done for Hanna Coal & Ore Co.

C. S. File No. 42/273-2

SCALE 1"=10.0'

PREPARED FOR
NORTH HANNA COAL & ORE CORP.



John H. M. [Signature]