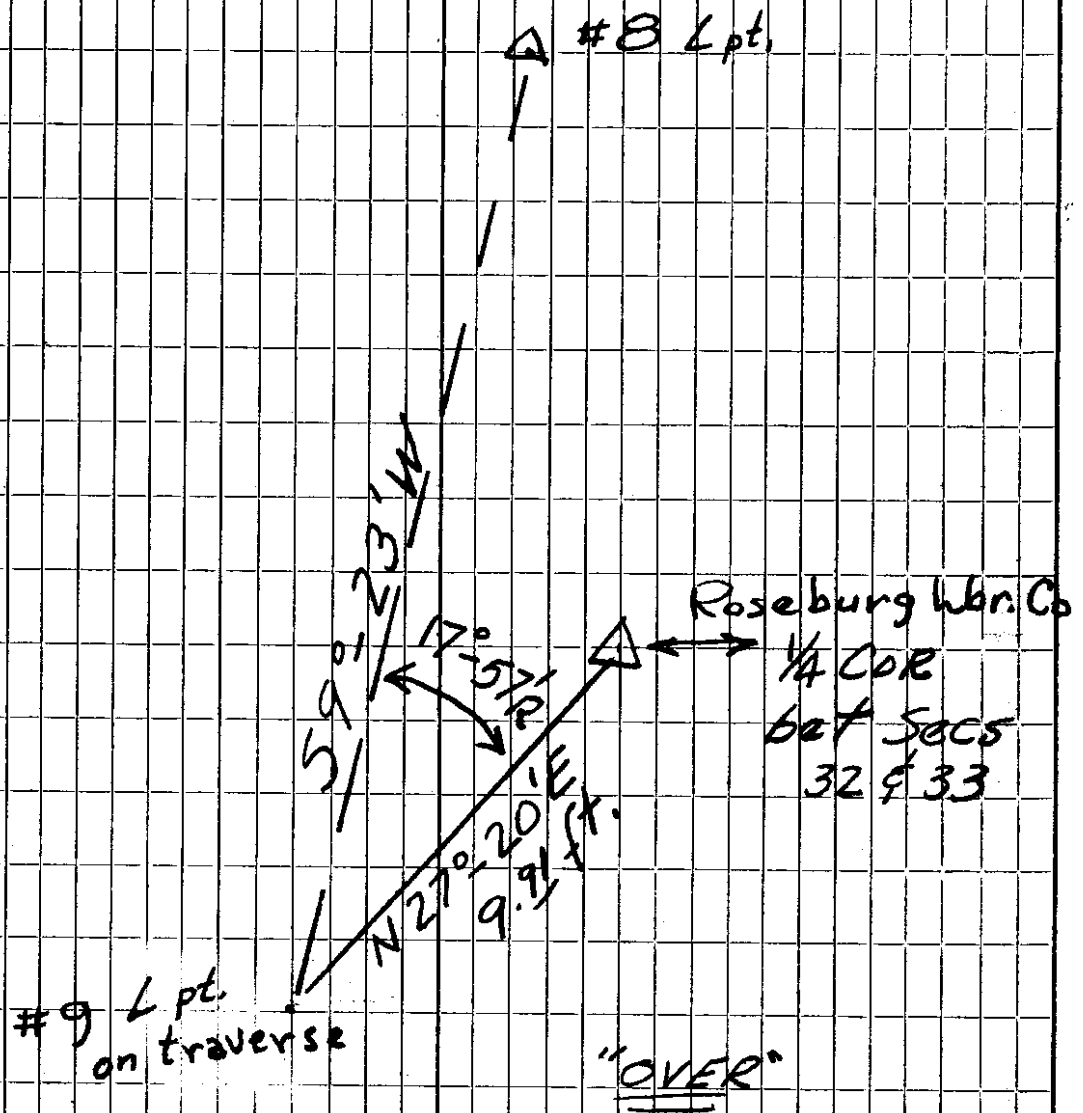


To Set $\frac{1}{4}$ Cor. bet 32 & 33
 T29S R3W by Transit
 Survey



Re-Establishing the 1/4 corner for

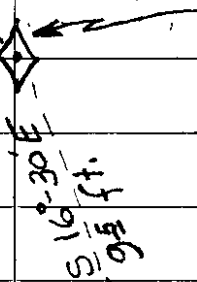
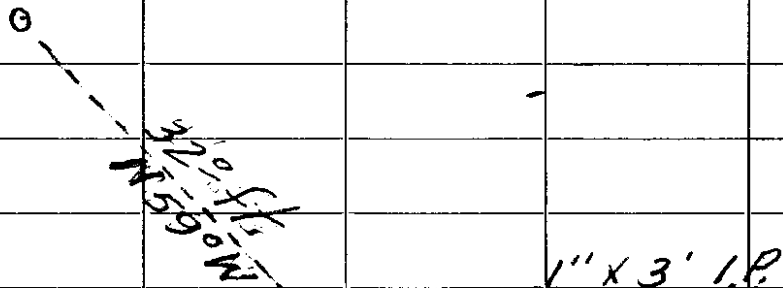
sections 32 & 33 T24S R3W.

May 9, 1957

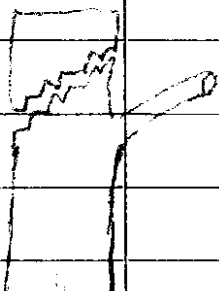
Witnesses:

R. J. Hennison
Steve Danckoh

5" Hemlock
Scribed
R.E. 3937 B.T.



22" FIR
Scribed
R.E. 3937 B.T.



RE3937

Scribed in wood

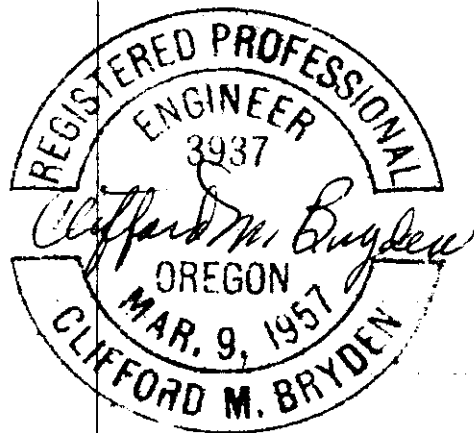
Notch

B.T.

Measurements to
center of root crown

Method of re-establishing $32|33$
 $\frac{1}{4}$ Cor. T245, R3W

Commencing at Sec. Cor $\frac{29|28}{32|33}$, I
run a transit traverse in a
southerly direction to Sec. Cor.
 $\frac{32|33}{5|4}$ and thence in a northerly
direction back to starting point.
Error of closure on travers 1:3500.
Coordinates for traverse were
calculated and the middle coord-
inates between Sec. Corners.
The $\frac{1}{4}$ Cor was then set by
turning the calculated angle and
distance off of the traverse.



C.S. File No. 42/271

29 28
32 33

Sec. Cor. set in 1956 by
County Surveyors Office.
Good condition.



2450.78'

4901.55'

N 4° 04' 37" W

2450.77'

1/4 Cor between Secs. 32 & 33,
T245, R3W, set by
proportional measurement
between section corners
from a closed transit
traverse. Bearings calcu-
lated from a magnetic
North - South bearing at
Sec Cor $\frac{29}{32} \frac{28}{33}$ using 20° E
Declination.

1/4 Cor. between Secs.
32 & 33, T245, R3W.

Witnessed by 2:
5" Hemlock N 59° W
32 ft. from the Cor
Scribed R.E. 3937 B.T.
22" Fir S 16° 30' E
9.5 ft. from the Cor.
Scribed R.E. 3937 B.T.

FILED
RECEIVED

JUN 5 1957

COUNTY SURVEYOR
DOUGLAS COUNTY, ORE.

32 33
5 4

Remains of three B.T.s
but are all wind-thrown.
Corner should be Reset.
Remains of Cor. post also
was found.

C. S. File No. 42/271