

5-23-57

Center of Sec. 17, T30S, R6W,
W.M. as det. by O.B.T.

A 26" Pine Stump (logged)
bears S 77° E. 70' dist. N.O.B.T.

A 20" Fir Stump (logged) bears
N 21° W 28.5' dist. O.B.T. fd. scribe
at cap pt. fd. scribe post
in large mound of stone.

I set brass cap in concrete
mkd. T30S, R6W 1/4 S 17 center
2880 - 1957

from which

A 16" Fir bears S 3° E. 197.0'
dist mkd. 1/4 S C.C. S 17. B.T.

A 10" Fir bears N 50° E. 239.0'
dist mkd. 1/4 S 17 C.C. B.T.

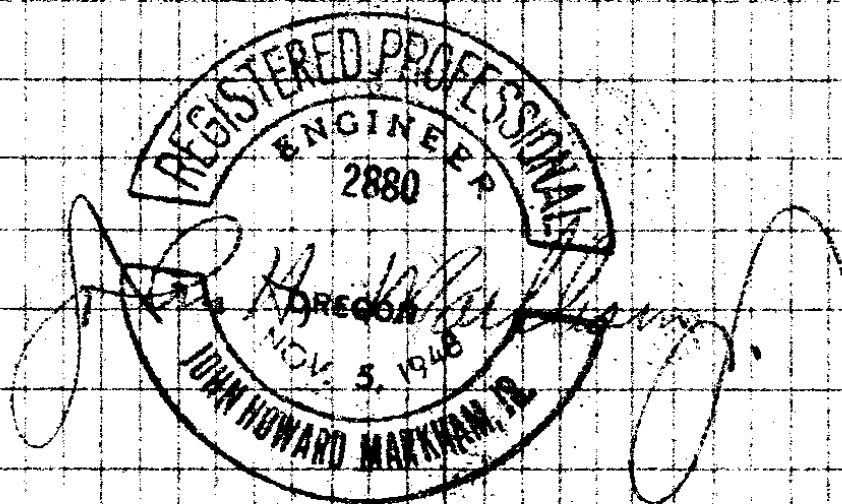
Mining road bears West 112.0'
This corner lies in mining area.

Witness:

Carl D. Jenks.

(OVER)

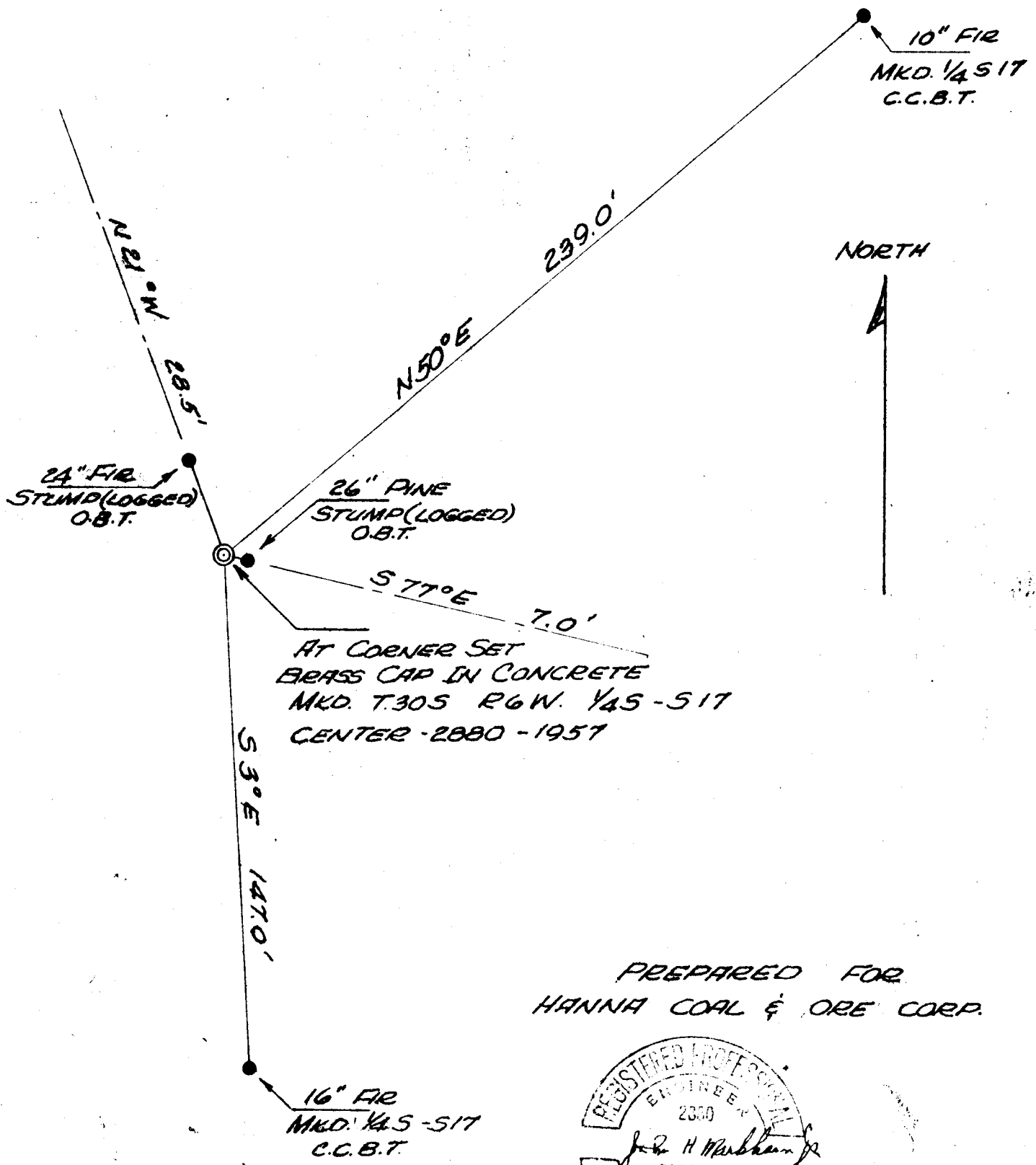
Work done for Hanna
Coal & Ore Co.



FILED
RECEIVED

JUN 6 1957

COUNTY SURVEYOR
DOUGLAS COUNTY, ORE.



PREPARED FOR
 HANNA COAL & ORE CORP.

