

FILED
RECEIVED

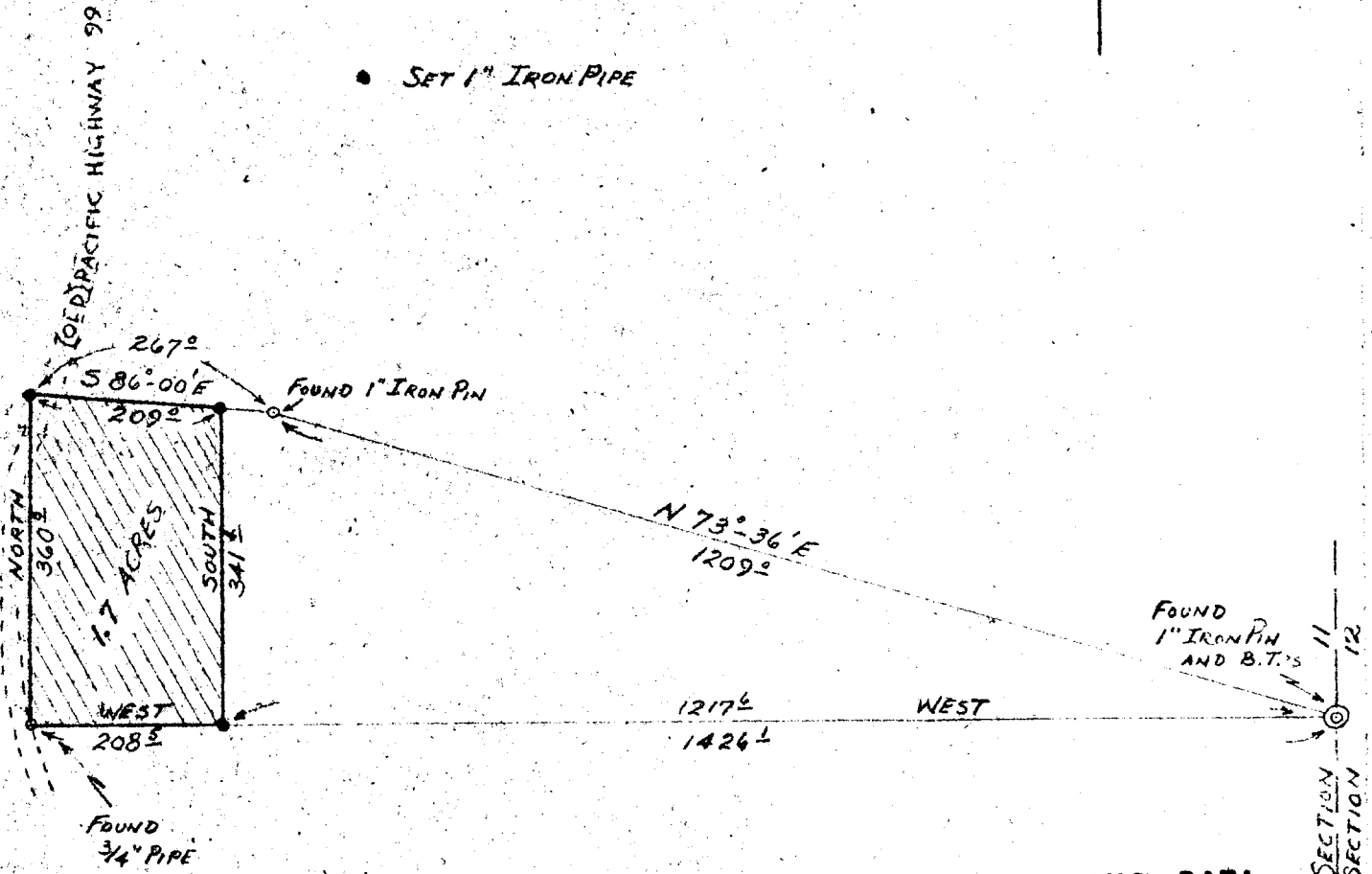
JUN 19 1957

COUNTY SURVEYOR
DOUGLAS COUNTY, ORE.

JMB



• SET 1" IRON PIPE



COUNTY SURVEYORS FILE DATA
DO NOT REMOVE FROM OFFICE



C. S. File No. 42/267

PLAT PREPARED FOR
W. M. HANIKS
AZALEA, OREGON
SEC. 11 T32S R5W W.M. DOUGLAS COUNTY, OREGON
SCALE: 1" = 200' Nov. 3, 1956
DON R. MARTIN, CONSULTING ENGINEER - MYRTLE CREEK