

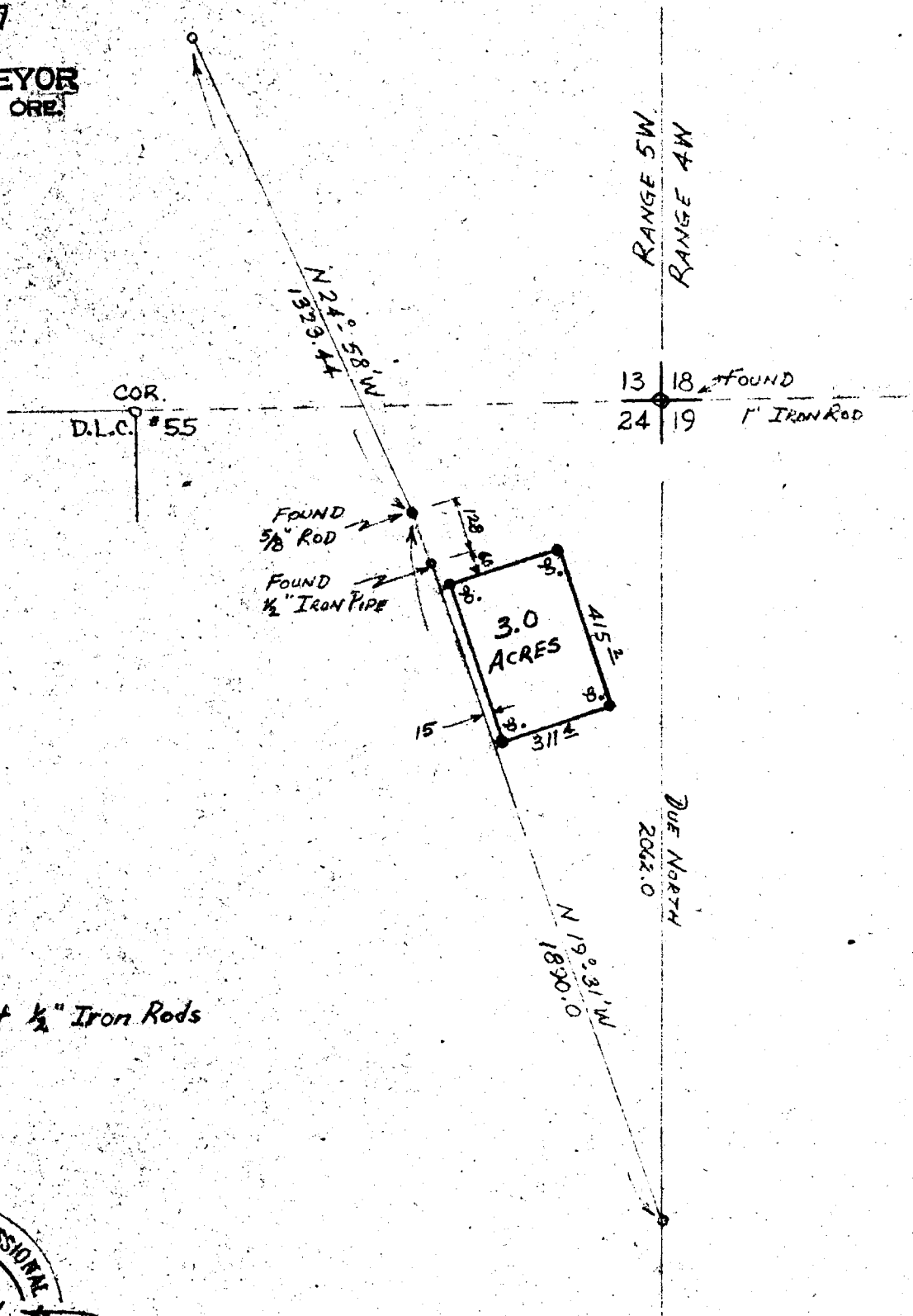
COUNTY SURVEYORS FILE DATA
DO NOT REMOVE FROM OFFICE

FILED
RECEIVED

JUN 19 1957

COUNTY SURVEYOR
DOUGLAS COUNTY, ORE.

AMB



• Set 1/2" Iron Rods



PLAT PREPARED FOR
THOMAS P. MALLORY
CANYONVILLE, OREGON
SEC 24 T30S R5W W.M. DOUGLAS COUNTY, OREGON
SCALE: 1"=400'
D.R. MARTIN, CONSULTING ENGINEER - MYRTLE CREEK

C. S. File No. 42/264

NE 1/4 sec 24
JUNE 1956