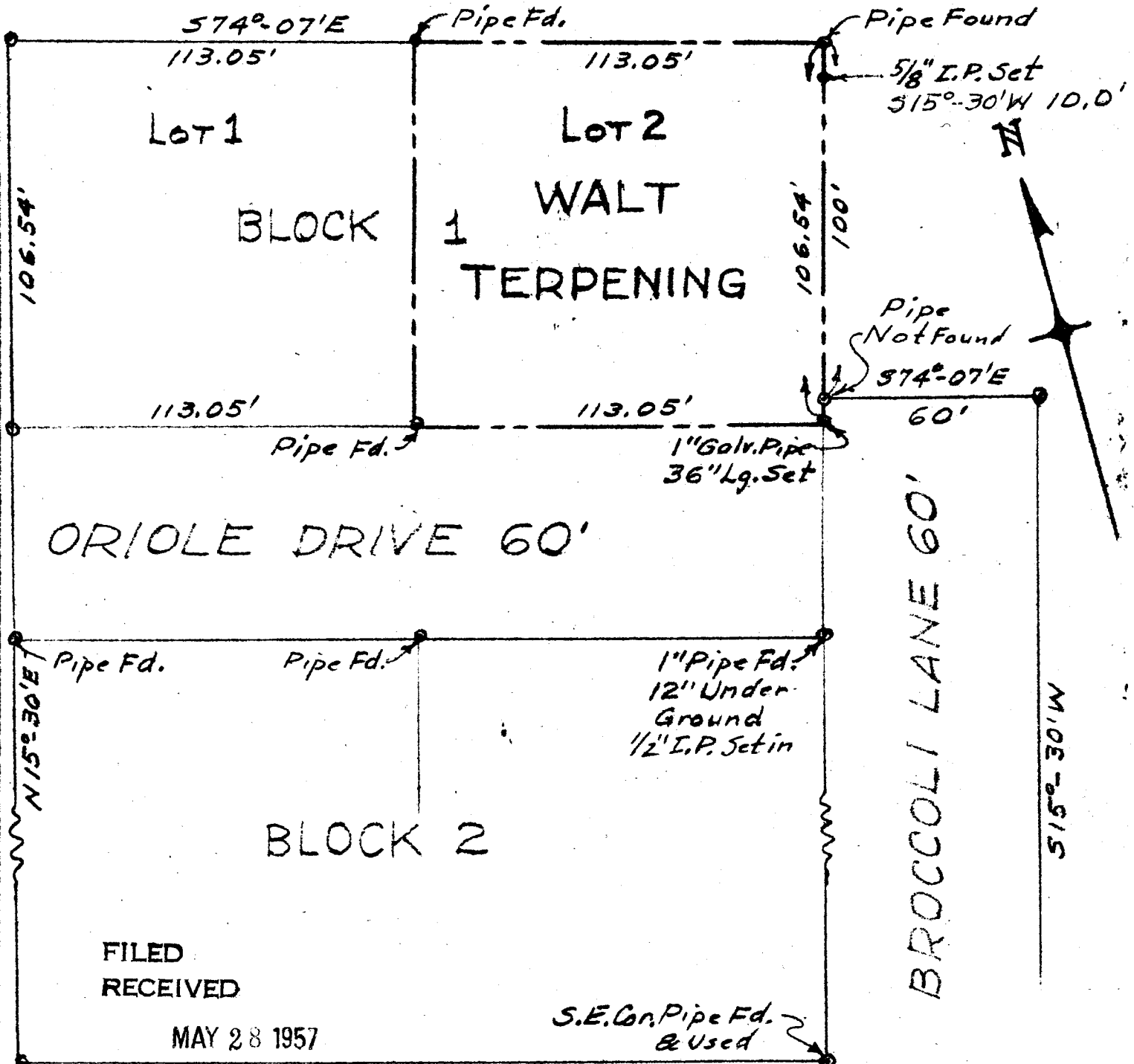


T2738667514
SURVEY OF LOT 2 - BLOCK 1 - GLENN ACRES - DOUGLAS COUNTY OREGON

COUNTY SURVEYORS FILE DATA
DO NOT REMOVE FROM OFFICE

Made For
WALT TERPENING



FILED
RECEIVED

MAY 28 1957

S.E. Co. Pipe Fd. & Used

COUNTY SURVEYOR
DOUGLAS COUNTY, ORE.

JRD

JAMES R. DAUGHERTY
CIVIL-SANITARY ENGINEER
ROSEBURG - ORE.

SCALE 1" = 40'

MAY 14, 1957.

C. S. File No. 42/261

