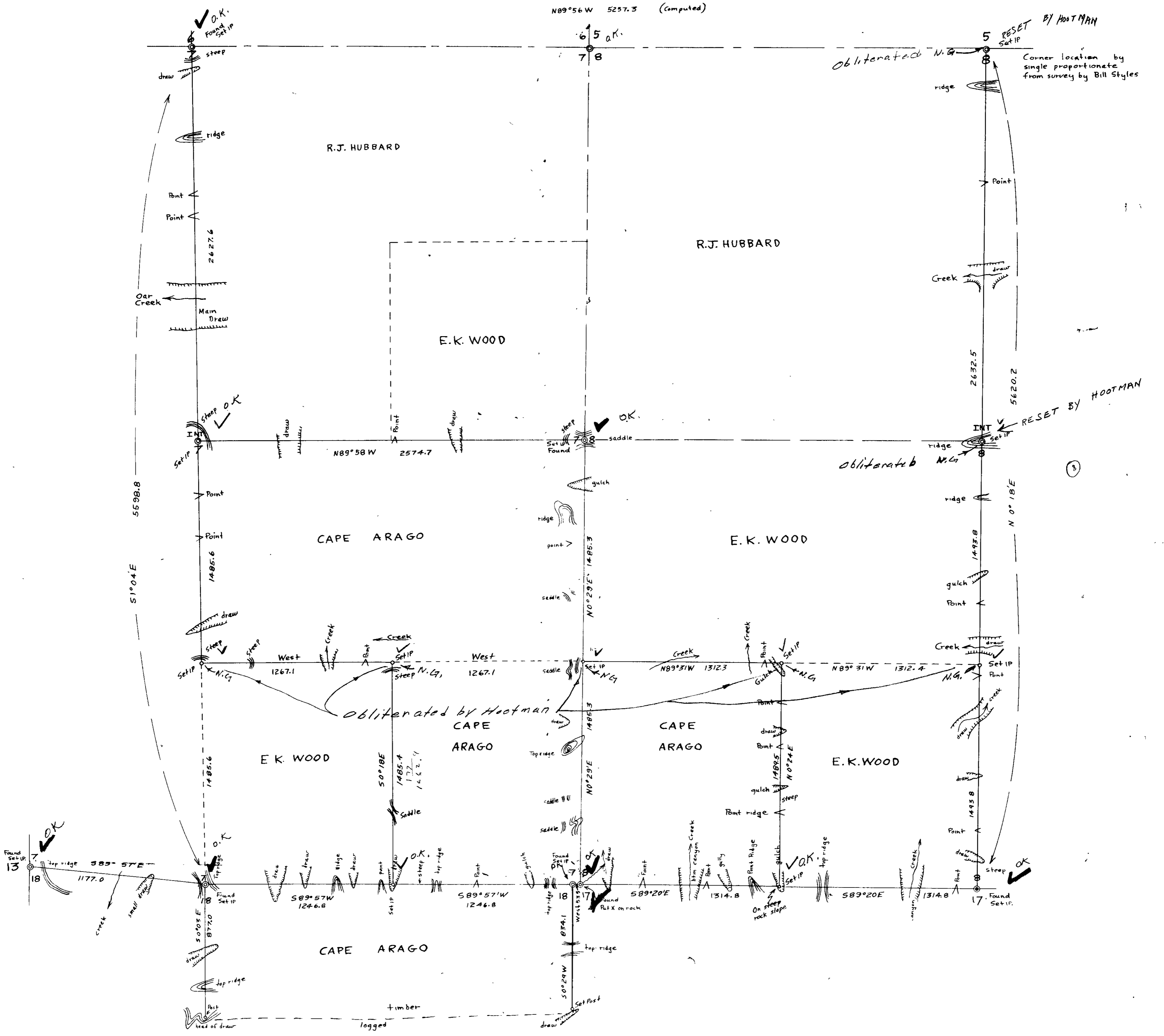


N89°56'W 5257.3 (Computed)

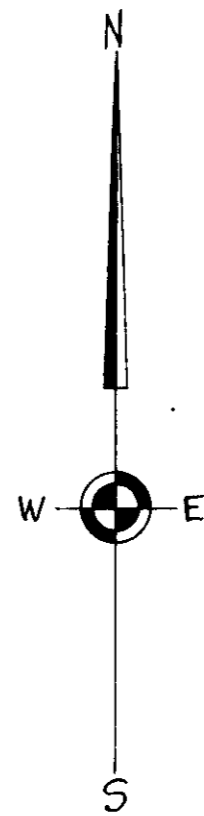


SURVEY FOR CAPE ARAGO LBR. CO.
 SHOWING PART OF
 SECS. 7, 8, 17 & 18, T. 22S., R. 11W., W.M. 1 D

Scale 1 in = 400 ft.
 Var. 20°E

March 1957

See C.S. FILE No. 42/386
 M12-47



P.O. newhouse

H. J. NEWHOUSE
CURRY COUNTY SURVEYOR
REG. LAND SURVEYOR

S. O. NEWHOUSE
REG. PROFESSIONAL ENGINEER
REAL ESTATE BROKER

TELEPHONE CHERRY 7-3302
WEDDERBURN, OREGON

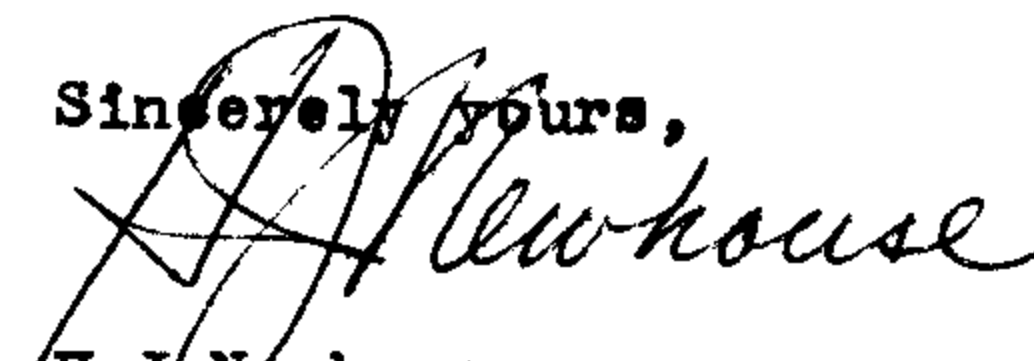
August 20, 1958

County Surveyor
Douglas County
Roseburg, Oregon

Dear sir,

You undoubtedly have received or will in the near future a plat by Mr. Warren Hootman (Registered Land Surveyor No. 399) concerning the completed subdivision of Sections 7 and 8, Township 22 South, Range 11 West, W.M. In his work Mr. Hootman has corrected some errors made by us in the Lottings of these Sections. This letter is to certify that we accept and recognize the changes and our survey stands corrected.

Sincerely yours,


H. J. Newhouse
County Surveyor

Letter admitting Error

FILED
RECEIVED

AUG 29 1958

COUNTY SURVEYOR
DOUGLAS COUNTY, ORE.

C.S. FILE # 42/256 b

PARTS OF THIS SURVEY VOID
See MAP FILE M 1-54
AND
See C.S. FILE
No. 42/386

Part of Secs. 7, 8, 17, & 18, T22S, R11W,
WM, in Douglas County, Oregon
FOR: Cape Arago Lumber Co.
BY: H.J. Newhouse, J.W. Hamilton, C. Hogue, E. Bennett,
and L. Hildreth, under supervision of
S.O. Newhouse
DATE: survey started Aug. 28, 1956.
Completed March 28, 1957.
PURPOSE: Location of Cutting lines.

This survey was made by compass and 200 ft. steel tape. The compass used was an a Mahn transit, No. 456. The vertical angles were also read by the transit. The variation used was 20° East.

We are shown the approximate East side of the Southeast $\frac{1}{4}$ of the Northeast $\frac{1}{4}$ of Section 18. This 40 had been logged and we used the green timber line as the approximate boundary.

Thence we paced North to the top of a steep ridge described in the Government field notes as being 449 feet South of the corner common to Sections 17 & 18 only.

Thence we run random line North, 449 feet and make a search for the double corner to Sections 7 & 8, and 17 & 18.

We make a tentative identification of both corners and from our temporary corner to Sections 7 & 8 we run random line North, to the $\frac{1}{4}$ corner between Sections 7 & 8.

We identify the $\frac{1}{4}$ corner between Section 7 & 8 from the original BT's:

30" fir, (now 54") N5°E, 41.0 ft.
10" Cherry, (now rotten stump), S45°W, 9.2 ft.

The 12" Cherry tree corner is gone. We drive an iron pipe from which bears:

10" Myrtle, N29°W, 14.5 ft. (scribed $\frac{1}{4}$ S7 BT)
54" fir, N5°E, 41.0 ft. (scribed bark - $\frac{1}{4}$ S8 BT)

In place of a post we mark a 72" Myrtle, North, 6.5 ft. $\frac{1}{4}$ cor.

ACCEPTED

CS FILE FOLDER

CONTAINS

MORE

INFORMATION

CS 42/256c