

MAP
OF
LAND SURVEYED
FOR
GENERAL PETROLEUM CO.
IN

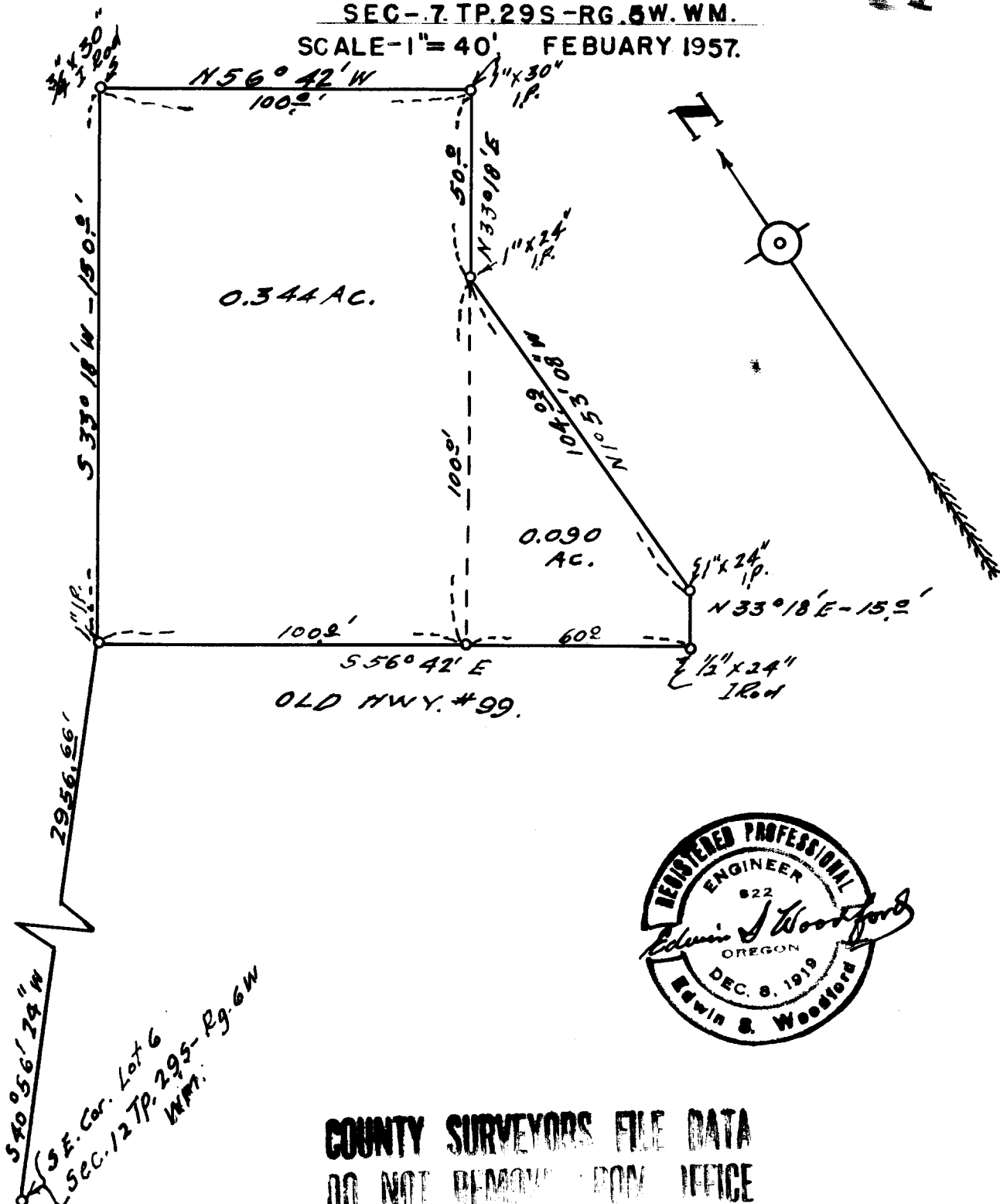
SEC-7, TP. 29S - RG. 6W. WM.

SCALE - 1" = 40' FEBRUARY 1957.

FILED
RECEIVED

FEB 25 1957

COUNTY SURVEYOR
DOUGLAS COUNTY, ORE.



COUNTY SURVEYORS FILE DATA
DO NOT REMOVE FROM OFFICE

C. S. File No. 42/245 P

CS FILE FOLDER

CONTAINS

MORE

INFORMATION