

FILED
RECEIVED

JAN 30 1957

COUNTY SURVEYOR
DOUGLAS COUNTY, ORE.

COUNTY SURVEYORS FILE DATA
DO NOT REMOVE FROM OFFICE

MAP

SHOWING LAND SURVEYED

FOR

R.W. MULDER

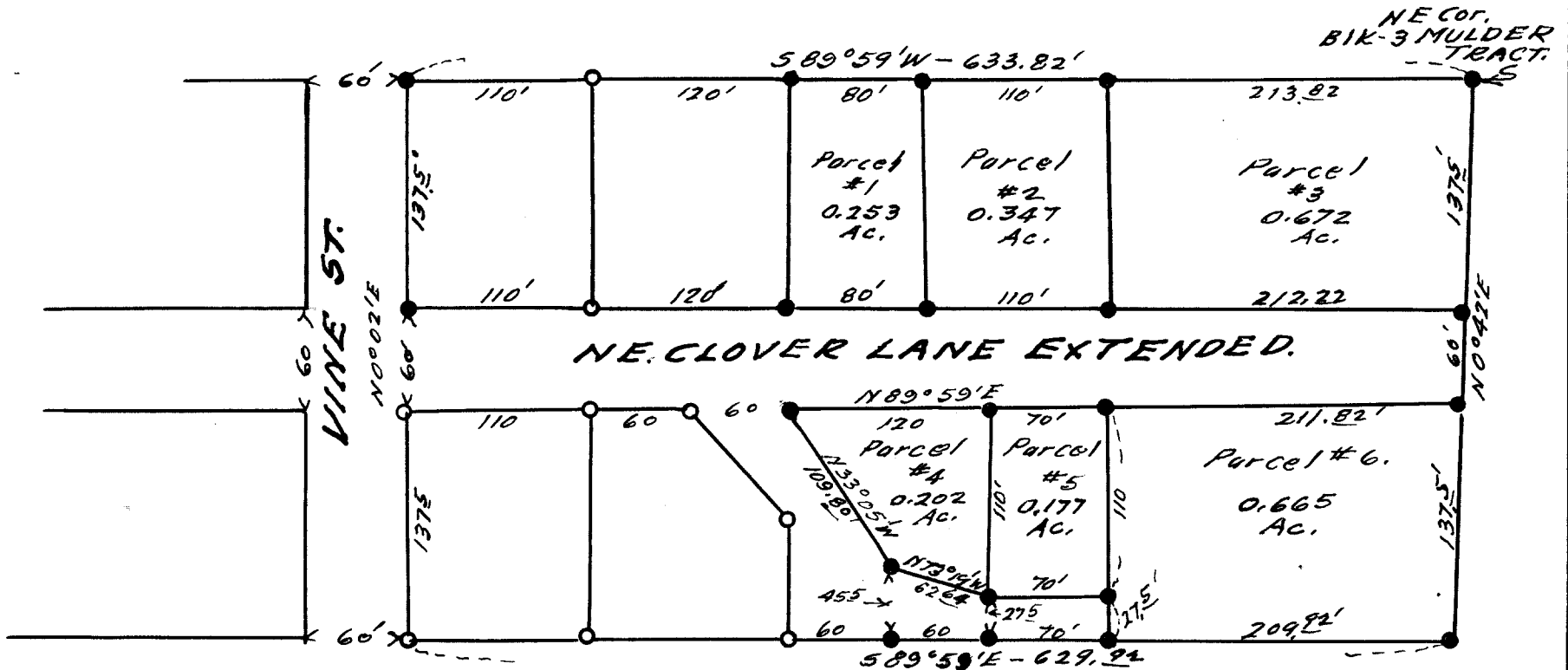
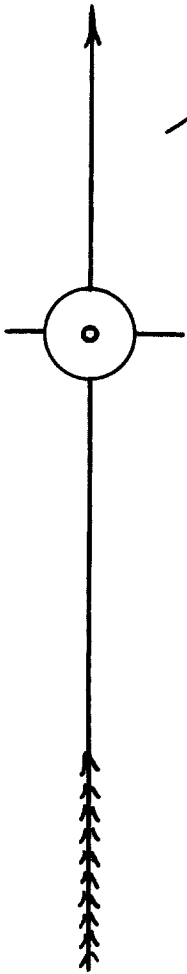
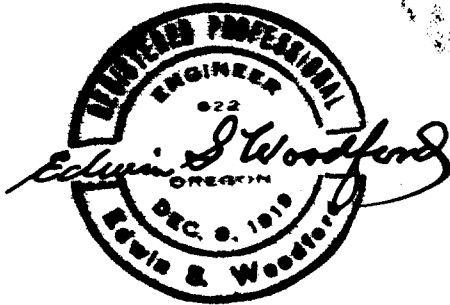
IN

BLOCK-3 - MULDER TRACT.

TP. 27S - R65W WM.

Scale-1"=100' AUGUST-1956.

LEGEND • = I. Rod.



SURVEYED FOR - R. W. MULDER

DATE OF SURVEY - AUGUST, 1956.

OBJECT OF SURVEY - TO FURTHER SUBDIVIDE BLOCK 3, MULDER TRACT

LOCATION OF LANDS SURVEYED - BLOCK 3, MULDER TRACT.

TYPE OF MAP FILED - CLOTH TRACING

DESCRIPTION OF LAND SURVEYED - SEE ACCOMPANYING SHEETS

(CS Folder has MORE INFO.)