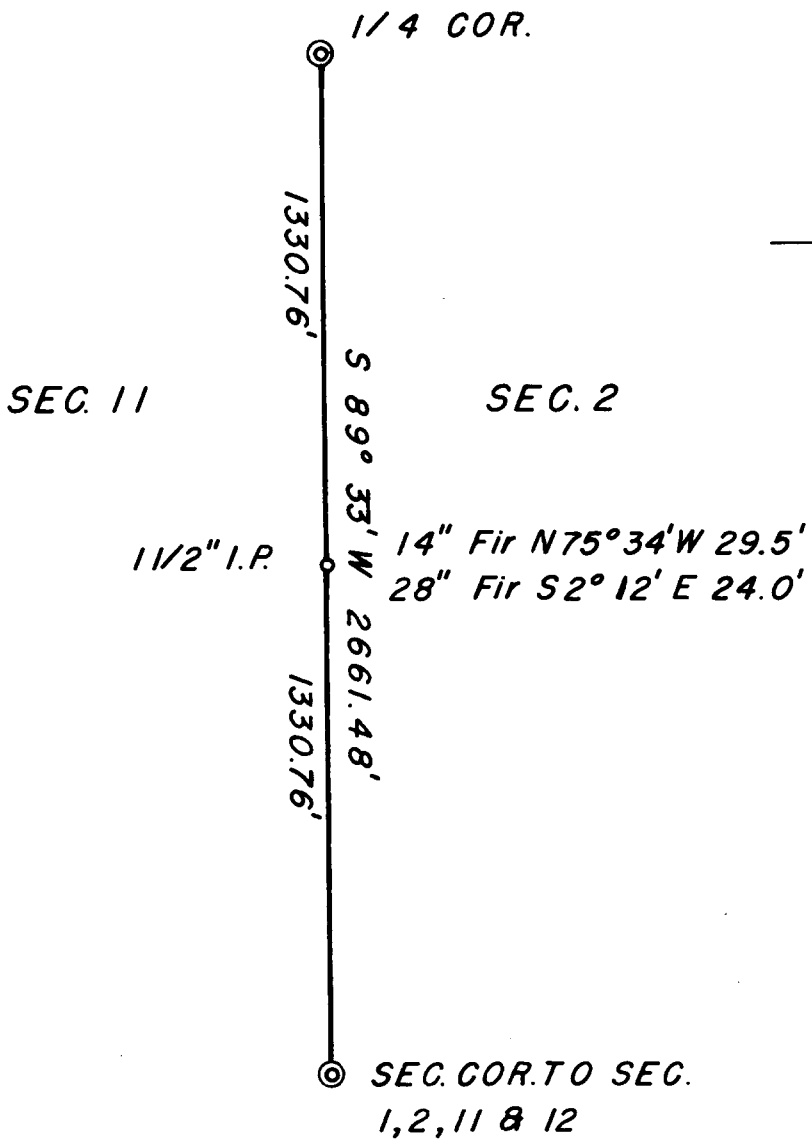


COUNTY SURVEYORS FILE DATA
DO NOT REMOVE FROM OFFICE



FILED
RECEIVED

JAN 17 1956

COUNTY SURVEYOR
DOUGLAS COUNTY, ORE.

JMD

R. H. GEE ENGINEERING SERVICES
ROSEBURG, ORE.

SURVEY TO ESTABLISH
E 1/16 SEC. 2 & E 1/16 SEC. 11
BETWEEN SECTIONS 2 & 11

T. 28 S., R. 8 W., W.M
DOUGLAS COUNTY, ORE.

JAN. 14, 1957



CS FILE FOLDER

CONTAINS

MORE

INFORMATION