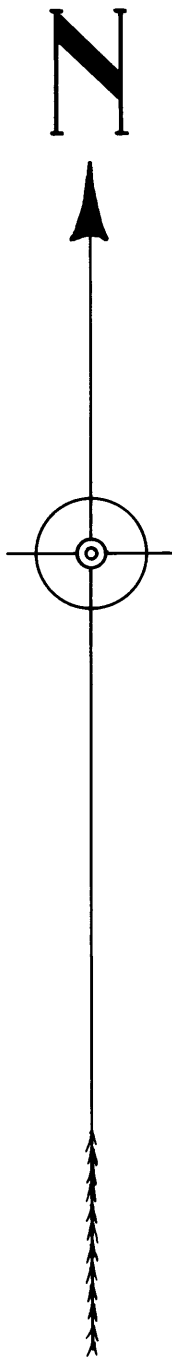
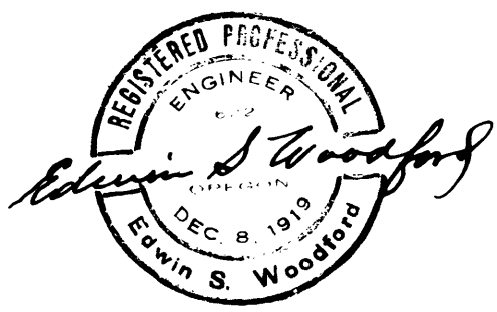
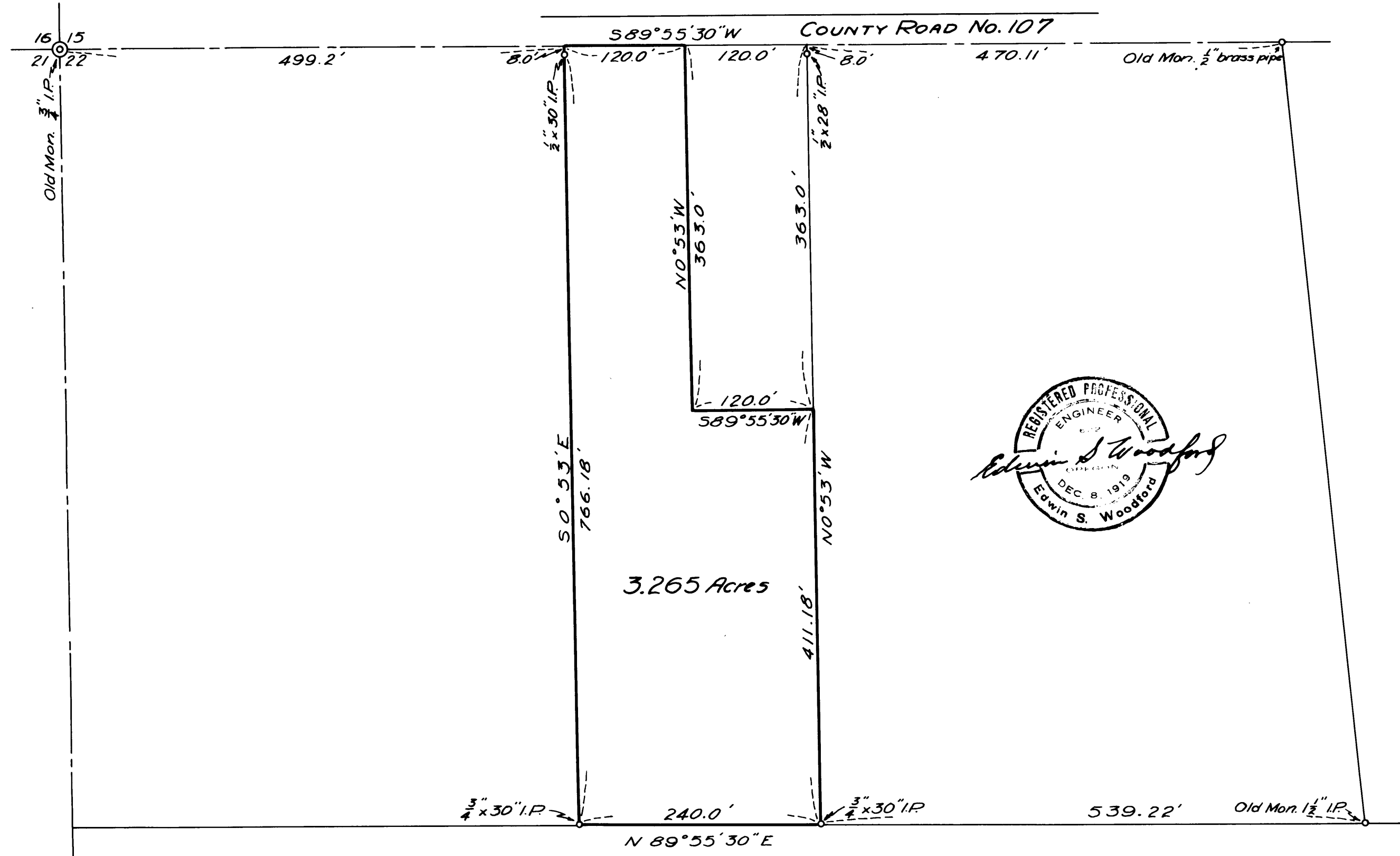


FILED
RECEIVED
JUL 1947
COUNTY SURVEYOR
DOUGLAS COUNTY, ORE.

MAP
OF
PORTION OF C.E. BOWMAN PROPERTY
SEC. 22, T28S, R6W, W.M.
SURVEYED: OCTOBER 1947
SCALE — 1-inch = 100ft.

COUNTY SURVEYORS FILE DATA
DO NOT REMOVE FROM OFFICE



-31-