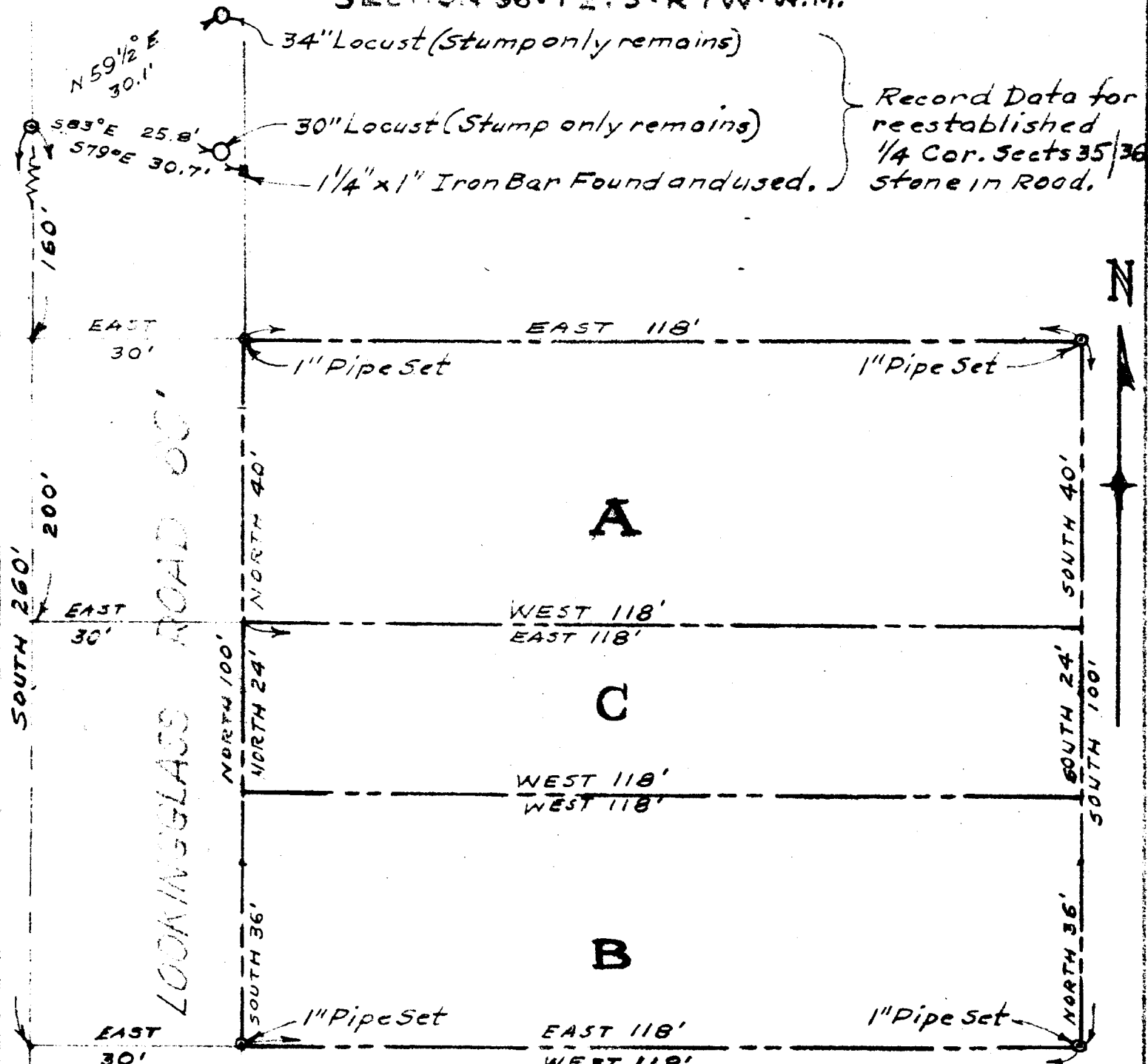


LOOKINGGLASS GRANGE #927 • LOOKINGGLASS • DOUGLAS COUNTY OREGON

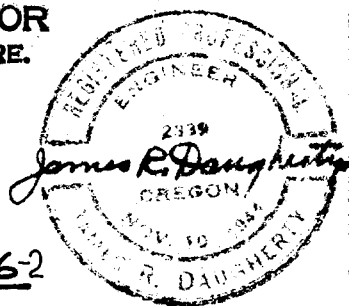
SECTION 36 • T 27 S • R 7 W • W.M.



FILED
COUNTY SURVEYORS FILE DATA RECEIVED
DO NOT REMOVE FROM OFFICE

FEB 1 1957

Surveyed By **COUNTY SURVEYOR**
DOUGLAS COUNTY, ORE.
JAMES R. DAUGHERTY
CIVIL-SANITARY ENGINEER
ROSEBURG, ORE.



SCALE 1" = 20'

Dec. 1, 1956.

C. S. File No. 42/1862