

# LOT SURVEYS - S. KANE & DILLARD STS. - MILLERS ADDITION TO CITY OF ROSEBURG - OREGON

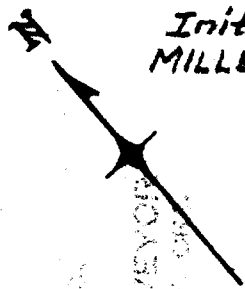
Surveyed By

**JAMES R. DAUGHERTY**  
 CIVIL-SANITARY ENGINEER  
 ROSEBURG - ORE.

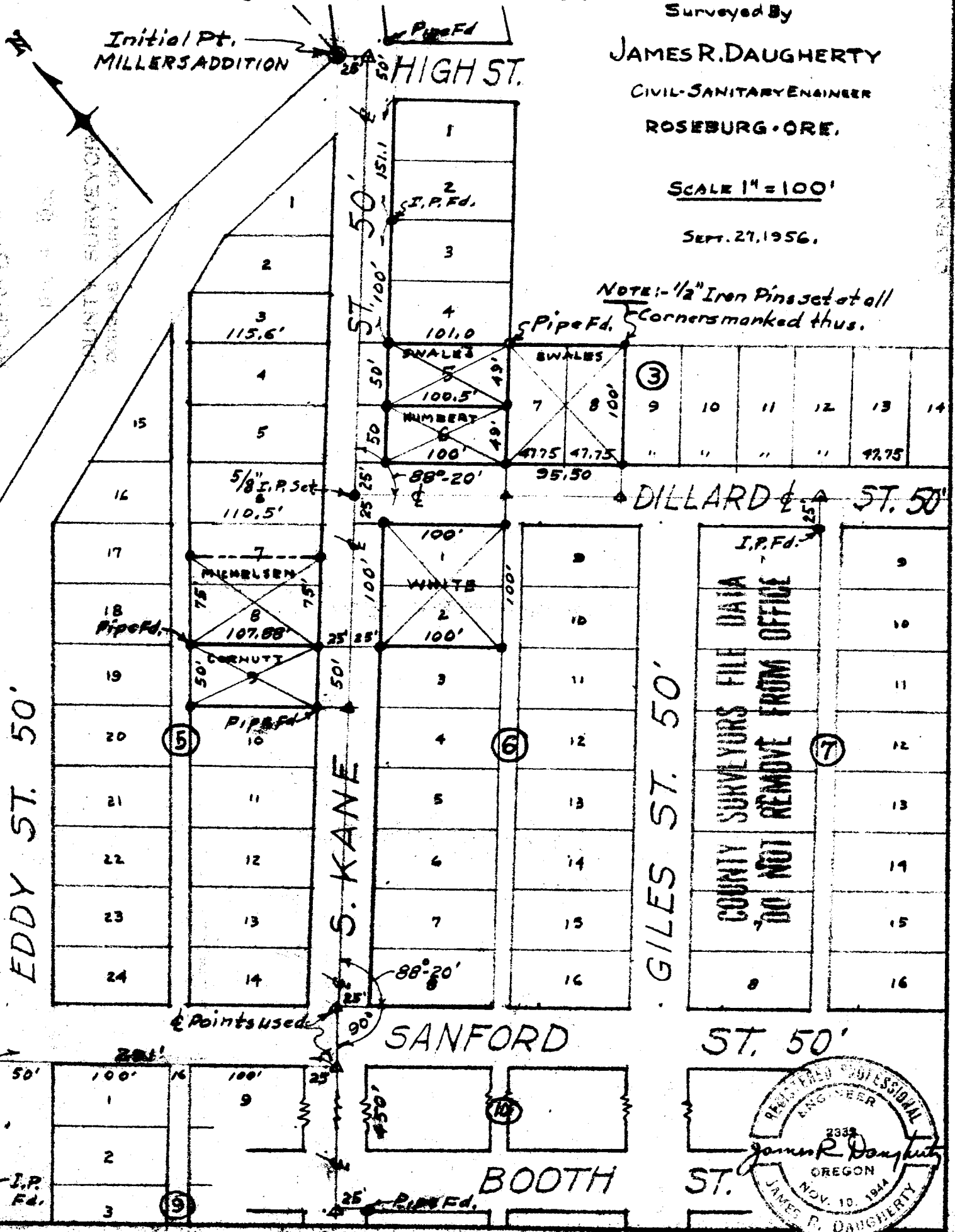
SCALE 1" = 100'

SEPT. 27, 1956.

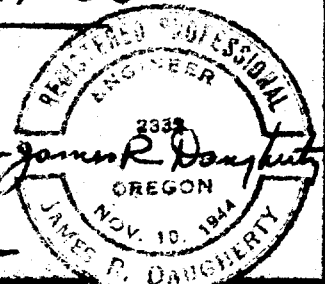
NOTE: 1/2" Iron Pins set at all corners marked thus.



Initial Pt. MILLERS ADDITION



|   |    |    |    |    |    |    |    |
|---|----|----|----|----|----|----|----|
| 9 | 10 | 11 | 12 | 13 | 14 | 15 | 16 |
| 9 | 10 | 11 | 12 | 13 | 14 | 15 | 16 |



COUNTY SURVEYORS FILE DATA  
 DO NOT REMOVE FROM OFFICE