

**HARRISON M. MUNGER**  
MINING  
REGISTERED PROFESSIONAL ENGINEER  
RIDDLE, OREGON

August 23, 1955

County Surveyor,  
Douglas County Courthouse,  
Roseburg, Oregon.

Gentlemen:

The following data is furnished concerning the restoration of the corner of sections 23, 24, 25 and 26, T30S, R4W, Douglas County.

Two days spent in attempts to find stone monument referred to in field notes and witness trees disclosed nothing. Location of the corner makes it impossible to make a permanent marker which should withstand re-current floods.

The corner was restored by double proportion method using corners of adjacent sections which I found; three of which were in excellent condition, the fourth, only fair.

I built a stone monument three feet high of river boulders, using a large, relatively cubic, quartz rock to mark the exact corner, August 10, 1955.

The following trees were marked for witness:

18" Alder bears N76°00'E 267.0 feet, marked as follows:  
S24 T30S R4W BT 3571 (in wood)

30" Fir bears S22°30'E 279.0 feet, marked as follows:  
NW COR CL 51 CS (in bark, and faint; I freshened it)

56" Fir bears N70°00'W 210.0 feet, marked as follows:  
S23 T30S R4W BT 3571 (in bark)

24" Fir bears S80°00'W 206.7 feet, marked as follows:  
S26 T30S R4W BT 3571 (in wood)

The Alder and 30" Fir are on East bank of river, and will probably not be disturbed, though they are on bank opposite the corner. The other Firs are in an area being logged and may be felled.

Very truly yours,

*Harrison M. Munger*

Harrison M. Munger

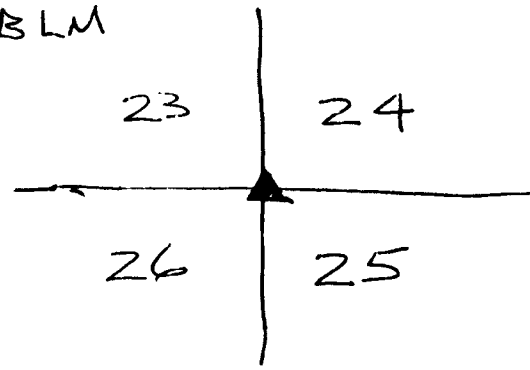
*Witness of restoration;  
Wm Anderson.*

11/2/81

FRITZ, JAKE CALLED

T30S RAW

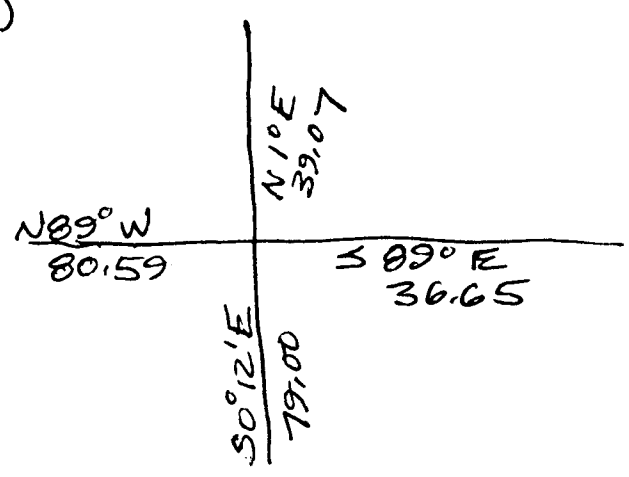
W 1/4 S. 24 FOUND BY BLM



MUNGER D.P. ▲ IN 1955 FROM "SECTION CORNERS IN 1963, D.C.S. REHABILITATED & SET W.C.

BLM FOUND W 1/4 & BECAUSE MUNGER SAID 'SECTION CORNERS', THEY REPROPORTION ITS POSITION TWO WAYS: (1) USING W 1/4 & (2) MUNGER'S WAY, USING ~~THE~~ NW CORNER. THESE 2 WAYS OF PROPORTIONING YIELD POSITIONS 30 IKS. APART.

USING (1) GIVES A POSITION 1CH 63 IKS FROM MUNGER'S POSITION. BLM RETRACEMENT DATA FOR (1)



DO YOU HAVE ANY COMMENTS?

G.S. FILE No. 42/177