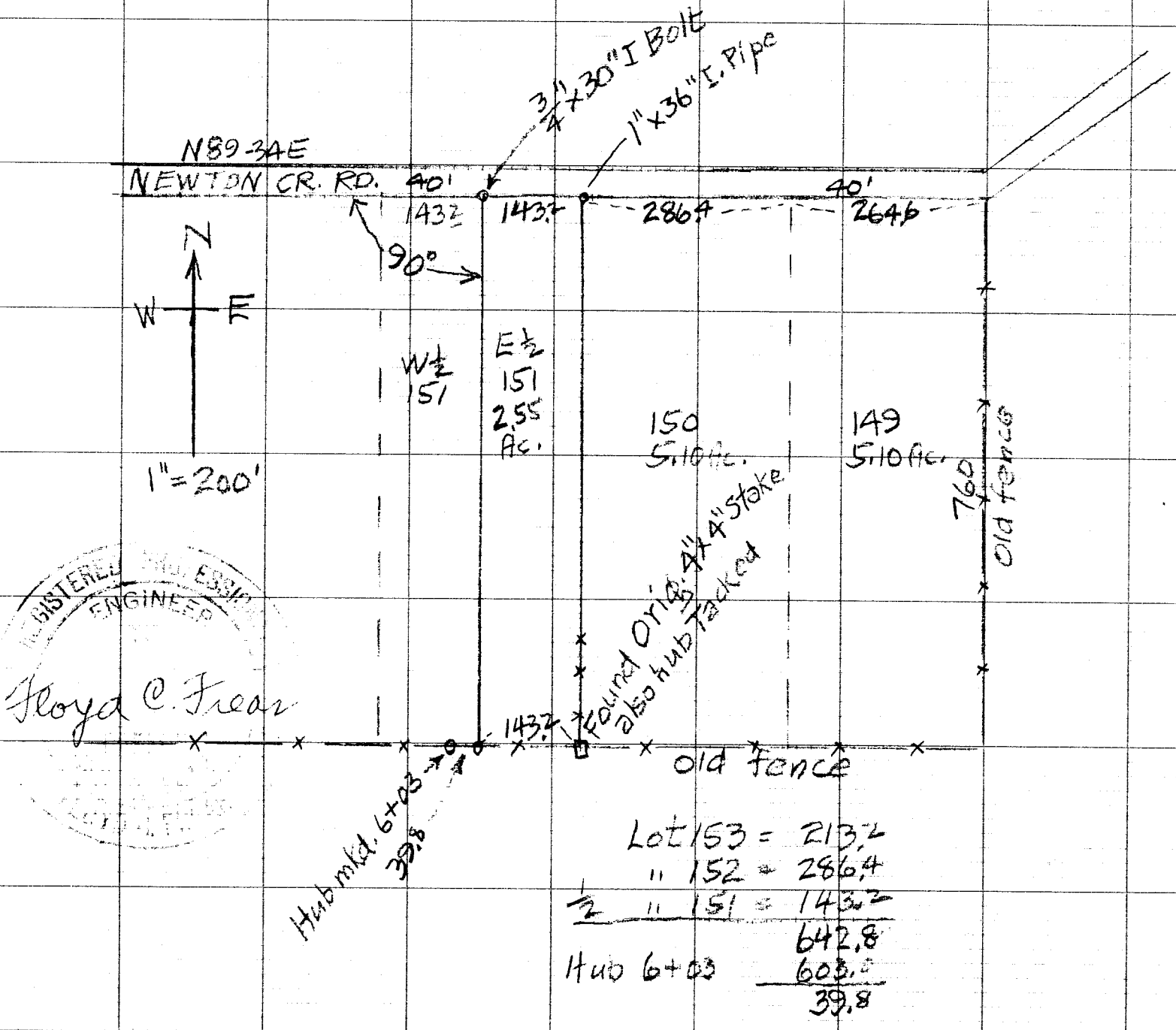


SURVEY FOR SARAH LIVELY East 1/2 of Lot 151  
 TRACT 1-PLAT 1 - Roseburg Orch. Co. Vol. 4/60  
 SEC. 7-T. 27-5 - Sept. 29<sup>th</sup> 1956 - J.C. Frear REG. 352



REGISTERED PROFESSIONAL ENGINEER  
 FLOYD C. FREAR

Lot 153 =	213.2
" 152 =	286.4
1/2 " 151 =	143.2
	642.8
Hub 6+03	603.0
	<u>39.8</u>

COUNTY SURVEYORS FILL DATA  
 DO NOT REMOVE FROM OFFICE

TRADE STANDARD MARK  
 REG. U.S. PAT. OFF.  
 CROSS SECTION 10 X 10  
 100% RAG PAPER  
 MADE IN U.S.A.

C. S. File No. 42/174