

FILED  
RECEIVED

AUG 21 1956

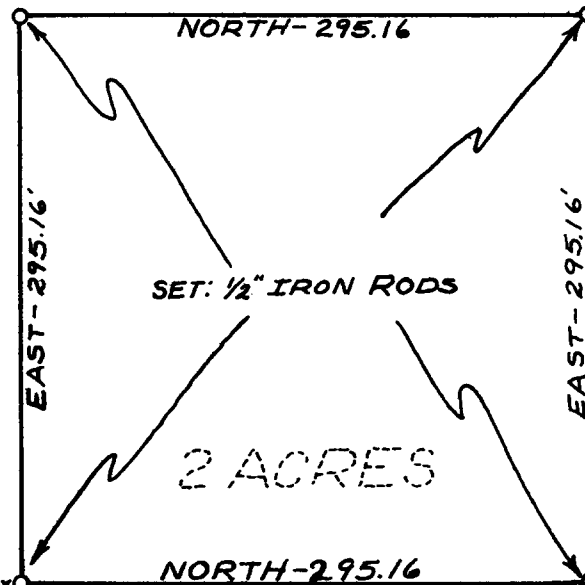
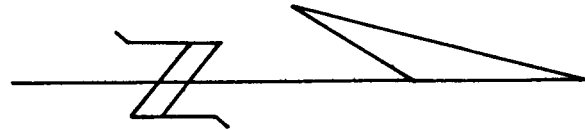
COUNTY SURVEYOR  
DOUGLAS COUNTY, ORE.

# METES & BOUNDS SURVEY FOR DEED DESCRIPTION

PART SE 1/4 NE 1/4, SECTION 35, T27 S, R7W, W.M.  
SURVEYED FOR: DOUGLAS COUNTY  
SURVEYED BY: G. ROBERT LECKLIDER  
AUGUST, 1956

SCALE: 1" = 100'

COUNTY SURVEYORS FILE DATA  
DO NOT REMOVE FROM OFFICE

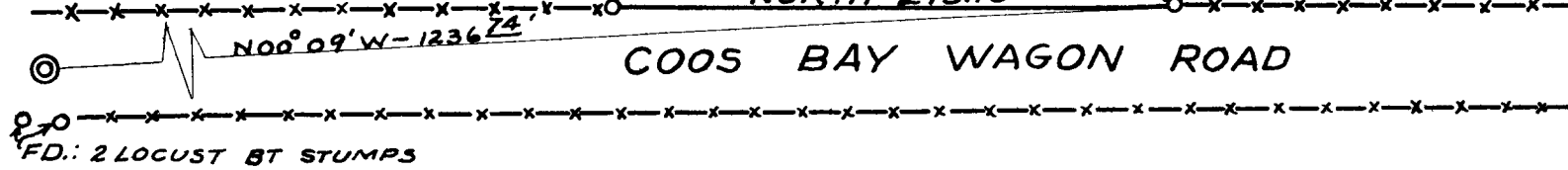


REGISTERED  
OREGON  
LAND SURVEYOR

*G. Robert Lecklider*

NOV. 4, 1955  
G. ROBERT LECKLIDER  
362

1/4 CORNER  
SEC. 35 & 36



C. S. File No. 42/166