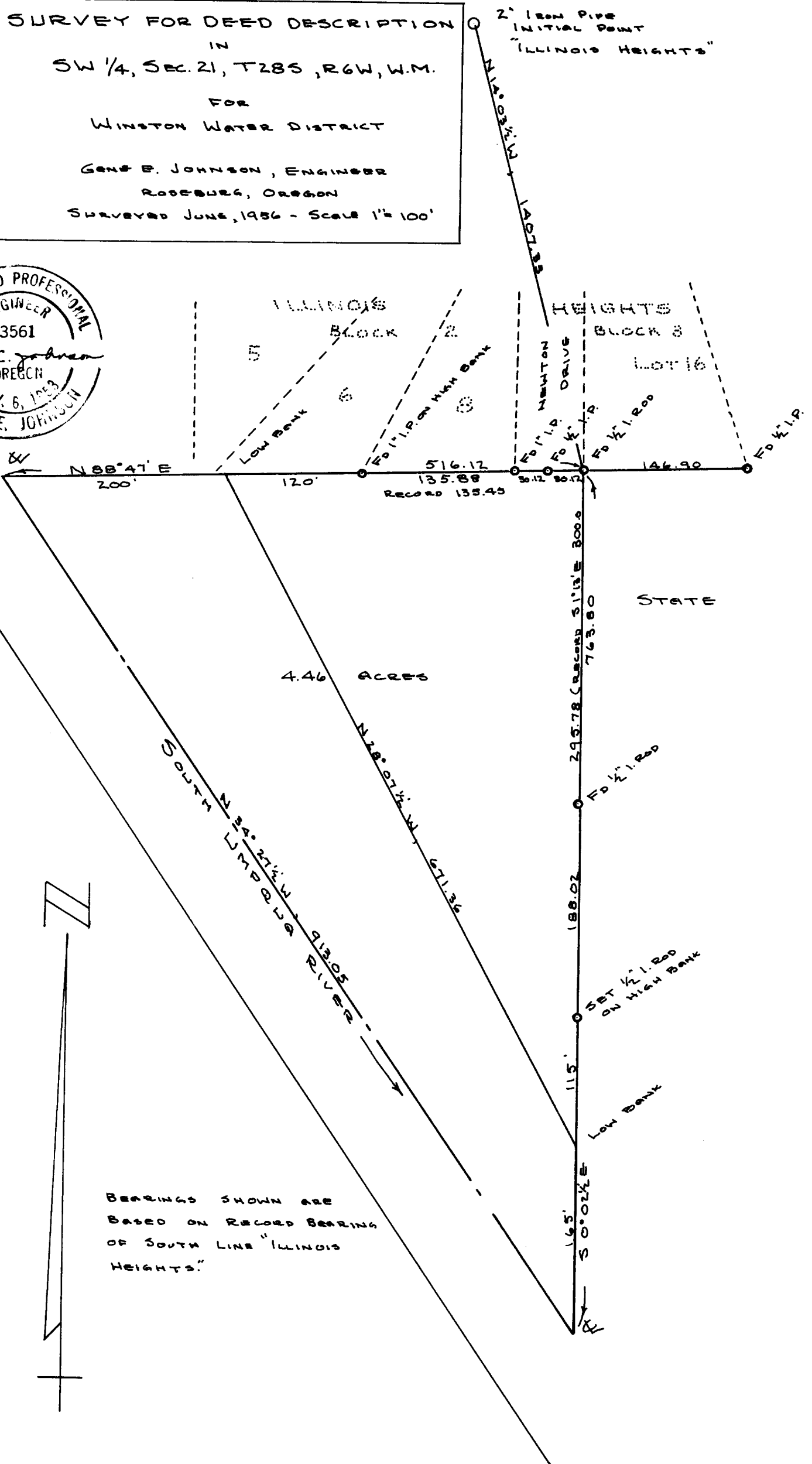
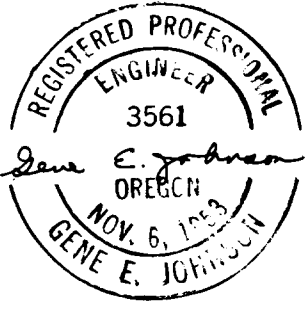


**COUNTY SURVEYORS FILE DATA
DO NOT REMOVE FROM OFFICE**

SURVEY FOR DEED DESCRIPTION
IN
SW 1/4, SEC. 21, T28S, R6W, W.M.
FOR
WINSTON WATER DISTRICT
GENE E. JOHNSON, ENGINEER
ROOSEBURG, OREGON
SURVEYED JUNE, 1956 - SCALE 1" = 100'



BEARINGS SHOWN ARE
BASED ON RECORD BEARING
OF SOUTH LINE "ILLINOIS
HEIGHTS."

SURVEY FOR DEED DESCRIPTION
IN
SW $\frac{1}{4}$ SECTION 21 T 28S R6W W.M.

Survey was made with Berger Transit and 300 ft. steel tape using method of deflection angles turned from a meridian.

I commenced on the South Line of "Illinois Heights" in Sec 21 T 28S R 6W W.M. and checked location of pipes as per record. Alinement was found good, distances somewhat short. I ran South from the N.W. corner of State Highway Property and tied in the S. W. corner of the Highway Property. This corner was found to be North and West of record position. I projected the West Line of Highway Property South and set a $\frac{1}{2}$ " iron rod on the high bank of the Umpqua River then measured to low bank and estimated to center of stream. I then ran North Westerly to the South Line of "Illinois Heights" using the S.W. corner of Lot 8 Block 2 as the high bank. I projected the South Line of "Illinois Heights" West and measured to the low bank and estimated to center line of river.

