

**DEPENDENT RESURVEY
WITH SUBDIVISION OF SECTION 14
T. 32 S., R. 4 W., WILL. MER.**

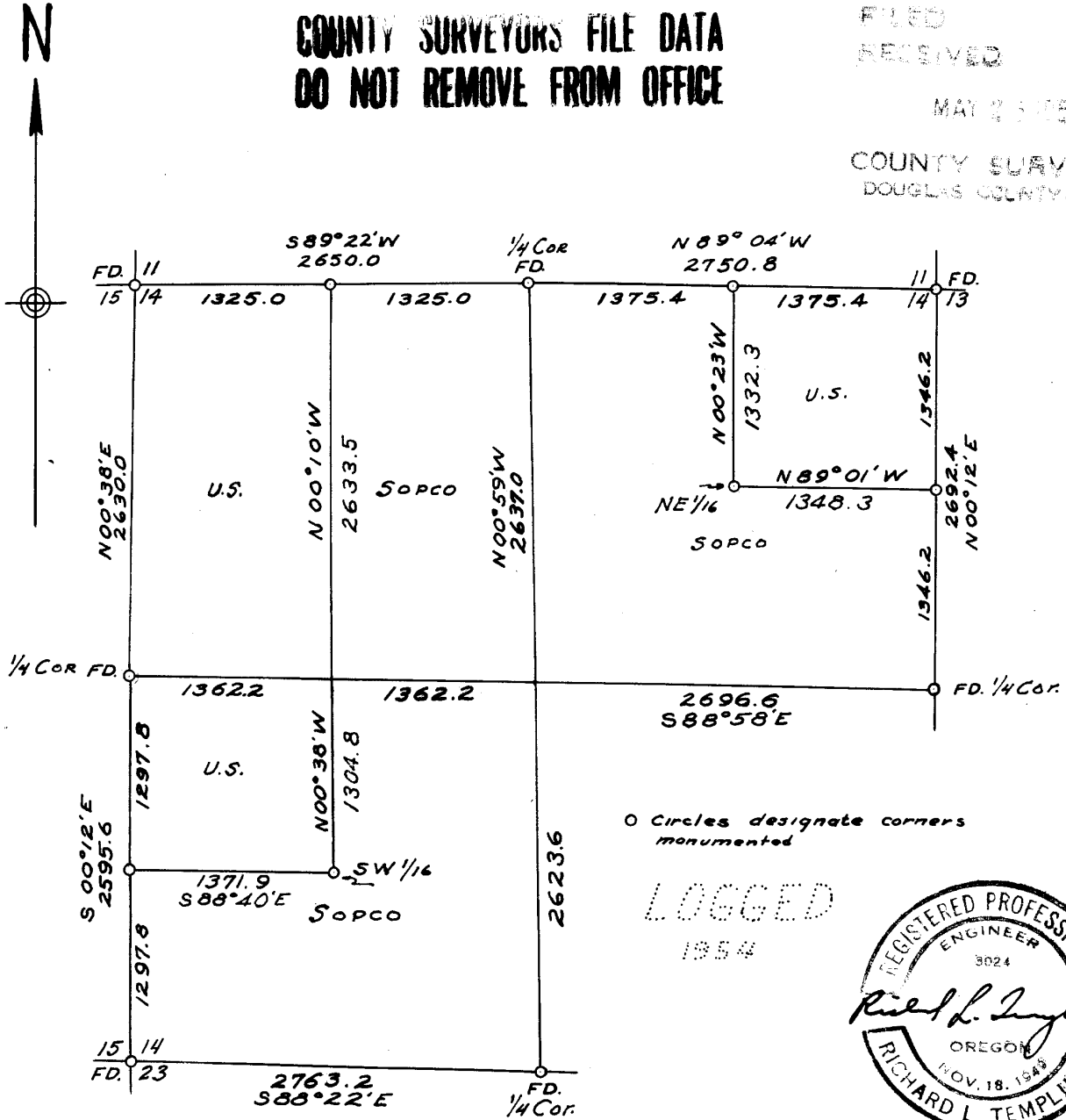
FOR
SOUTHERN OREGON PLYWOOD CORP., GRANTS PASS, ORE.
Scale: 1" = 1000' May 10, 1956

**COUNTY SURVEYORS FILE DATA
DO NOT REMOVE FROM OFFICE**

FILED
RECEIVED

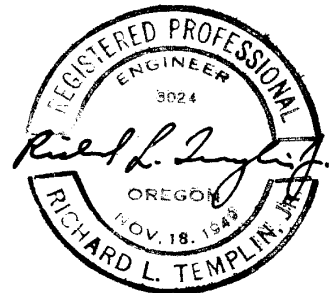
MAY 23 1956

COUNTY SURVEYOR
DOUGLAS COUNTY, ORE.



O Circles designate corners monumented

LOGGED
1954



This survey executed with a Gurley Solar Instrument, Leupold Mtn. Transit and 200 ft. steel. Distances were measured on the slope with vertical angles determined by a clinometer in good adjustment. Bearings based upon solar observations and are referred to true meridian. Purpose of survey was to establish lines for logging. All lines established were blazed and painted red.

RICHARD L. TEMPLIN, JR.
CONSULTING ENGINEER AND FORESTER
1004 N.W. HAWTHORNE
GRANTS PASS, OREGON

FILED
RECEIVED

MAY 25 1956

May 25, 1956
FIELD NOTES OF SURVEY
OF
DEPENDENT RESURVEY AND
SUBDIVISION OF SECTION 14
T. 32 S., R. 4 W., W.M.

COUNTY SURVEYOR
DOUGLAS COUNTY, ORE.

Survey executed in April and May 1956, for
Southern Oregon Plywood Corporation
Grants Pass, Oregon

Commencing at the 1/4 corner of sections 14 and 15 which is a stone
14 x 12 x 8 inches mkd 1/4 on west face from which the following
original witness trees bear:

- a 28" Douglas-fir bears N 81*W 61 lks. distant,
- a stump of 24" Douglas-fir bears S 47*E 13 lks. distant;

I scribe the following new witness tree:

- a 28" Douglas-fir S78*E 21.0 ft distant mkd. 1/2 S 14 BT RE3024;
- thence,

N 00* 38' E on a true line between sections 14 and 15,

2630.0' Point for section corner common to sections 10, 11, 14 and 15.

The locus of this corner was determined from the intersection of
original blazed section lines ascertained by ring count and from
the rotted stumps of the four original bearing trees with no marks
discernable;

- a rotted stump of 24" Douglas-fir bears N 31*E 50.5 ft distant,
- a rotted stump of 24" Douglas-fir bears S 72*E 32.0 ft distant,
- a rotted stump of 20" Douglas-fir bears S 56*W 45.1 ft distant,
- a rotted stump of 20" Douglas-fir bears N 5*W 72.4 ft distant;

I was unable to find the rock after a diligent search.

I placed a mound of stone to monument the corner from which bears
the following new witness trees:

- a 5" Douglas-fir bears S 24*W 10.9 ft distant mkd. S15BTRE3024
- a 7" Douglas-fir bears N 24*W 32.0 ft distant mkd. S10BTRE3024
- a 6" Douglas-fir bears N 26*E 44.0 ft distant mkd. S11BTRE3024
- a 10" Douglas-fir bears S 3*E 54.4 ft distant mkd. S14BTRE3024

thence,

N 89*22'E on a true line between sections 11 and 14,

1325.0' Point for W 1/16 section corner of sections 11 and 14 at proportion-
al distance. Set a 1/2" x 24" iron pipe 18" in ground from which:

- a 7" Douglas-fir bears S 22*W 34.1 ft distant mkd.
W 1/16 S 14 BT RE3024
- a 8" Douglas-fir bears N 58*W 17.9 ft distant mkd.
W 1/16 S 14 BT RE3024

RICHARD L. TEMPLIN, JR.
CONSULTING ENGINEER AND FORESTER
1004 N.W. HAWTHORNE
GRANTS PASS, OREGON

SURVEY OF SECTION 14, T. 32 S., R. 4 W., W.M. (cont.)

- a 30" Douglas-fir stump bears S 70°E 7.9 ft distant
rotted stump, no marks visible
- a 12" Cedar stump bears S 88°W 11.2 ft distant
rotted and charred stump, no marks visible

I plainly scribe the following new bearing trees:

- a 8" Douglas-fir bears N 60°50'W 33.5 ft distant
mkd. 1/4 S 14 BT RE3024
- a 6" Douglas-fir bears N 73°20'E 24.9 ft distant
mkd. 1/4 S 13 BT RE3024

thence,

N 88°58'W on a true east-west centerline of section 14,

5421.0' Point for 1/4 corner of sections 14 and 15: previously described
and point of commencing.

thence,

S 00°12' E on a true line between sections 14 and 15,

1297.2' The point for the S 1/16 section corner of sections 14 and 15 at
proportionate distance. Set a 3/4" iron pipe 24" long 18" in
the ground from which:

- a 27" Douglas-fir bears S 75°30'W 11.1 ft distant
mkd. S 1/16 S 15 BT RE3024
- a 5" Douglas-fir bears N 24°E 19.7 ft distant
mkd. S 1/16 S 14 BT RE3024(tag)

2595.6' Point for corner common to sections 14, 15, ²²(23) and 24 which I
monument with a quartz stone 18" x 10" x 7" = 10" in the ground
and mounded around with smaller quartz stones, from which the follow-
ing original witness trees bear:

- a 26" Douglas-fir snag bears N 32°E 17.8 ft distant, blaze
healed
- a 30" Douglas-fir bears S 30°E 37.6 ft distant, blaze
healed
- a 30" Douglas-fir snag bears S 51°W 11.2 ft distant, blaze
healed
- a 30" Douglas-fir snag bears N 45°W 45.6 ft distant, scribe
visible

This corner located in a recent burn and no green trees were

RICHARD L. TEMPLIN, JR.
CONSULTING ENGINEER AND FORESTER
1004 N.W. HAWTHORNE
GRANTS PASS, OREGON

SURVEY OF SECTION 14, T. 32 S., R. 4 W., W.M. (Cont.)

available to be scribed.

thence,

S 88°22'W on a true line between sections 14 and 23,

2763.2' Point for 1/4 corner of sections 14 and 23 which I monument with a slate stone 18 x 10 x 5 inches mkd. 1/4 on the north face from which the following original witness trees bear:

a 40" Douglas-fir bears N 16°W 14.5 ft distant, blaze healed ✓

a 16" Douglas-fir bears S 52°W 22.4 ft distant, blaze healed

thence,

N 00°59'W on a true north-south centerline of section 14,

5260.6' Point for 1/4 corner of sections 11 and 14 previously described.

Thence, I return to the S 1/16 corner of sections 14 and 15 and run S 88°40'E on the calculated east-west centerline of the SW 1/4 of section 14 a distance of 1371.9 ft. which is the point of the SW 1/16 corner of section 14. I set a 7 x 10 x 14 inch stone mkd. 1/16 on north face from which:

a 18" Hemlock bears S 30°E 23.4 ft distant,
mkd. SW 1/16 S 14 RE3024

a 26" Douglas-fir bears N 39°W 23.5 ft distant,
mkd. SW 1/16 S 14 RE3024.

Thence, N 00°32' W on the calculated north-south centerline of the SW 1/4 of section 14 until I intersect with the east-west centerline of section 14.

Thence, I return to the W 1/16 section corner of sections 11 and 14 and run S 00°10'E on the calculated north-south centerline of the NW 1/4 of section 14 until I intersect the temporary CW 1/16 section corner of section 14.

Thence, I return to the N 1/16 section corner of sections 13 and 14 and run N 89°01'W on the calculated east-west centerline of the NE 1/4 a distance of 1348.3 ft which is the point for the NE 1/16 section

RICHARD L. TEMPLIN, JR.
CONSULTING ENGINEER AND FORESTER
1004 N.W. HAWTHORNE
GRANTS PASS, OREGON

SURVEY OF SECTION 14, T. 32 S., R. 4 W., W.M. (cont.)

Continue N 89°22'E on true line between sections 11 and 14,

2650.0' Point for 1/4 corner of sections 11 and 14 which is a rock 12 x 8 x 8 inches mkd. 1/4 on north face from which the following original witness trees bear:

- a 38" Douglas-fir bears N 7 $\frac{1}{2}$ *E 32.4 ft distant
- a 56" Douglas-fir bears S 57*E 13.9 ft distant

thence,

S 89°04'E on a true line between sections 11 and 14,

1375.4' Point for E 1/16 section corner of sections 11 and 14 at proportionate distance. Set a quartz stone 22 x 12 x 10 inches 12 inches in the ground from which the following witness trees bear:

- a 44" Douglas-fir bears S 61°30'E 9.0 ft distant,
mkd. E 1/16 S 14 BT (tag-RE3024)
- a 28" Douglas-fir bears N38°15'W 18.8 ft distant,
mkd. E 1/16 S 11 BT RE3024

2750.8' Point for corner common to sections 11, 12, 13, and 14 which I monument with a basalt stone 10 x 7 x 7 inches 5 inches in ground from which the following original witness trees bear:

- a 32" Douglas-fir snag bears N 7*E 43.6 ft distant blaze evident
- a 24" Douglas-fir bears S 46*E 42.3 ft distant scribing visible
- a 40" Douglas-fir snag bears S 40*W 95.1 ft distant
blaze evident
- a 28" Douglas-fir bears N 70*W 67.6 ft distant blaze healed

I scribe the following new witness trees:

- a 6" Douglas-fir bears N40°30'E 20.3 ft distant
mkd. S 12 BT RE3024
- a 12" Douglas-fir bears S25°55'W 62.0 ft distant
mkd. S 14 BT RE3024

thence,

S 00°12'W on a true line between sections 13 and 14,

1346.2' Point for N 1/16 section corner of sections 13 and 14 at proportionate distance. Set stone 15 x 11 x 8 inches mkd. 1/16 on west face from which:

- a 42" Douglas-fir bears S 9°30'E 36.8 ft distant
mkd. N 1/16 S 13 BT RE3024
- a 8" Douglas-fir bears N 57°30'W 89.4 ft distant
mkd. N 1/16 S 14 BT RE3024

2692.4' Point for 1/4 corner of sections 13 and 14 which is a stone 14 x 8 x 6 inches mkd 1/4 on west face which I set in a mound of stone from which:

RICHARD L. TEMPLIN, JR.
CONSULTING ENGINEER AND FORESTER
1004 N.W. HAWTHORNE
GRANTS PASS, OREGON

SURVEY OF SECTION 14, T. 52 S., R. 4 W., W.M. (cont)

corner of section 14. I set a 6 x 6 x 18 inch stone mkd. 1/16 on the west face from which:

- a 6" Douglas-fir bears N 62°40'E 31.2 ft distant
mkd. NE 1/16 S 14 BT RE3024
- a 20" Douglas-fir bears N 43°10'W 29.0 ft distant
mkd. NE 1/16 S 14 BT RE3024.

Thence,

N 00°23'W on the calculated north-south centerline of the NE 1/4 until I intersect the E 1/16 section corner of sections 11 and 14 which has been previously described.

The survey was executed with a Gurley solar instrument, a Leupold mountain transit, and a 200.0 foot steel tape with distance measured on the slope and vertical angles measured with a clinometer in good adjustment.

The purpose of the survey was to establish cutting lines for logging operations in the E $\frac{1}{2}$ NW $\frac{1}{2}$, E $\frac{1}{2}$ and SW $\frac{1}{2}$ of the SW $\frac{1}{2}$, and the W $\frac{1}{2}$ and the SE $\frac{1}{4}$ of the NE $\frac{1}{2}$. These lines were all blazed and spray painted a bright red. Merchantable trees outside the property were blazed on the side facing the property with three vertical blazes which were also painted red.

All 1/16 section corners bearing trees faces were also painted bright red.

Bearings were based upon solar observations by both transit and solar instrument and were carried through on the property lines. Weather varied from sun to rain.

