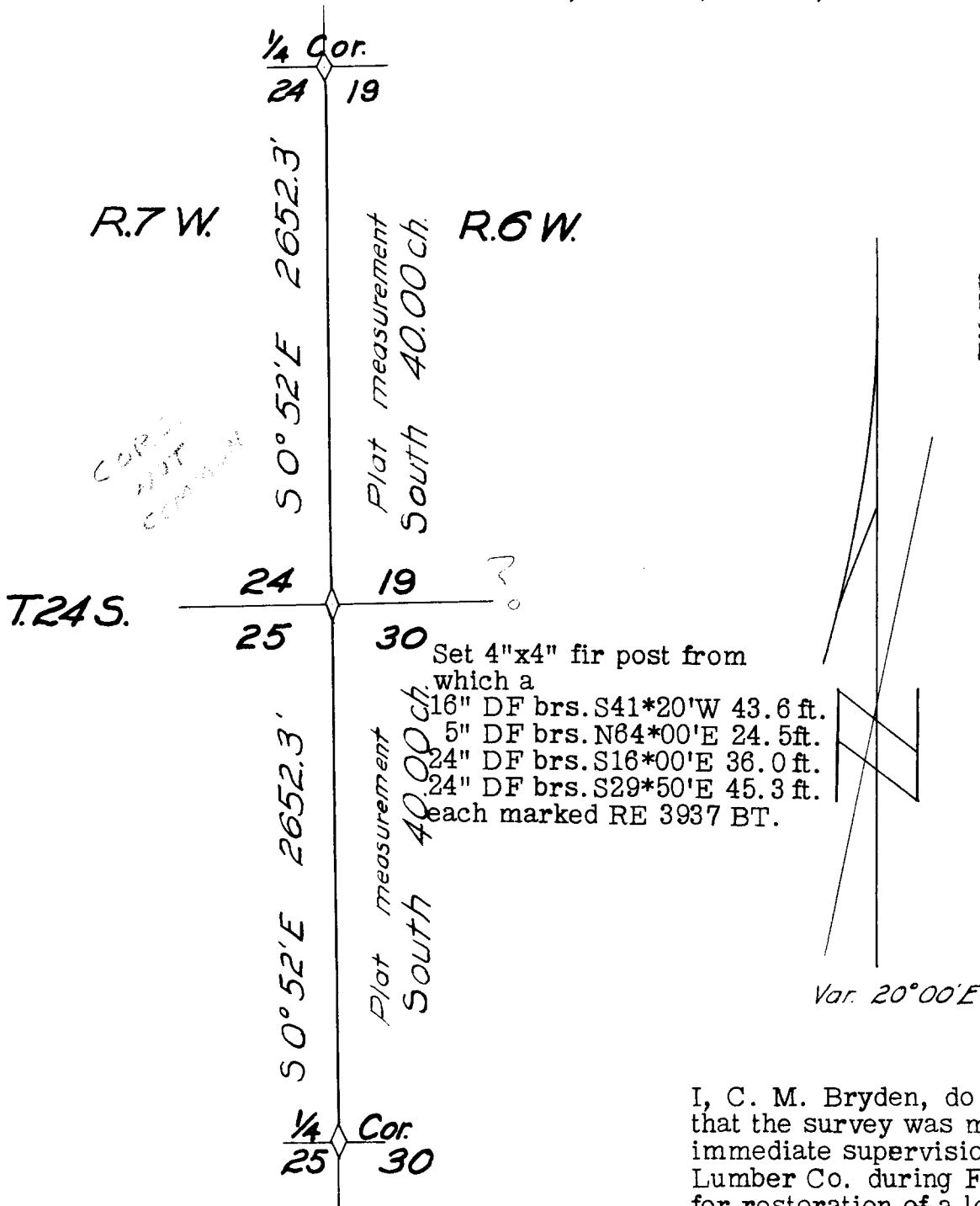


RESTORATION OF THE SECTION CORNER

common to

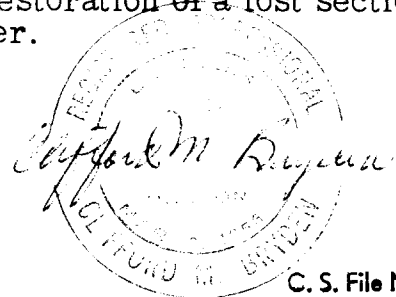
Sec's. 24 & 25, T.24 S., R.7W., W.M.
 Sec's. 19 & 30, T.24 S., R.6W., W.M.



FILED
 RECEIVED
 AUG 1 1956
 COUNTY SURVEYOR
 DOUGLAS COUNTY, ORE.

Survey by transit traverse

I, C. M. Bryden, do hereby certify that the survey was made under my immediate supervision for Roseburg Lumber Co. during February 1956 for restoration of a lost section corner.



C. S. File No. 42/157