

IVAR NELSON PARCEL - SECTION 7 - T25S - R4W - W.M.
DOUGLAS COUNTY - ORE.

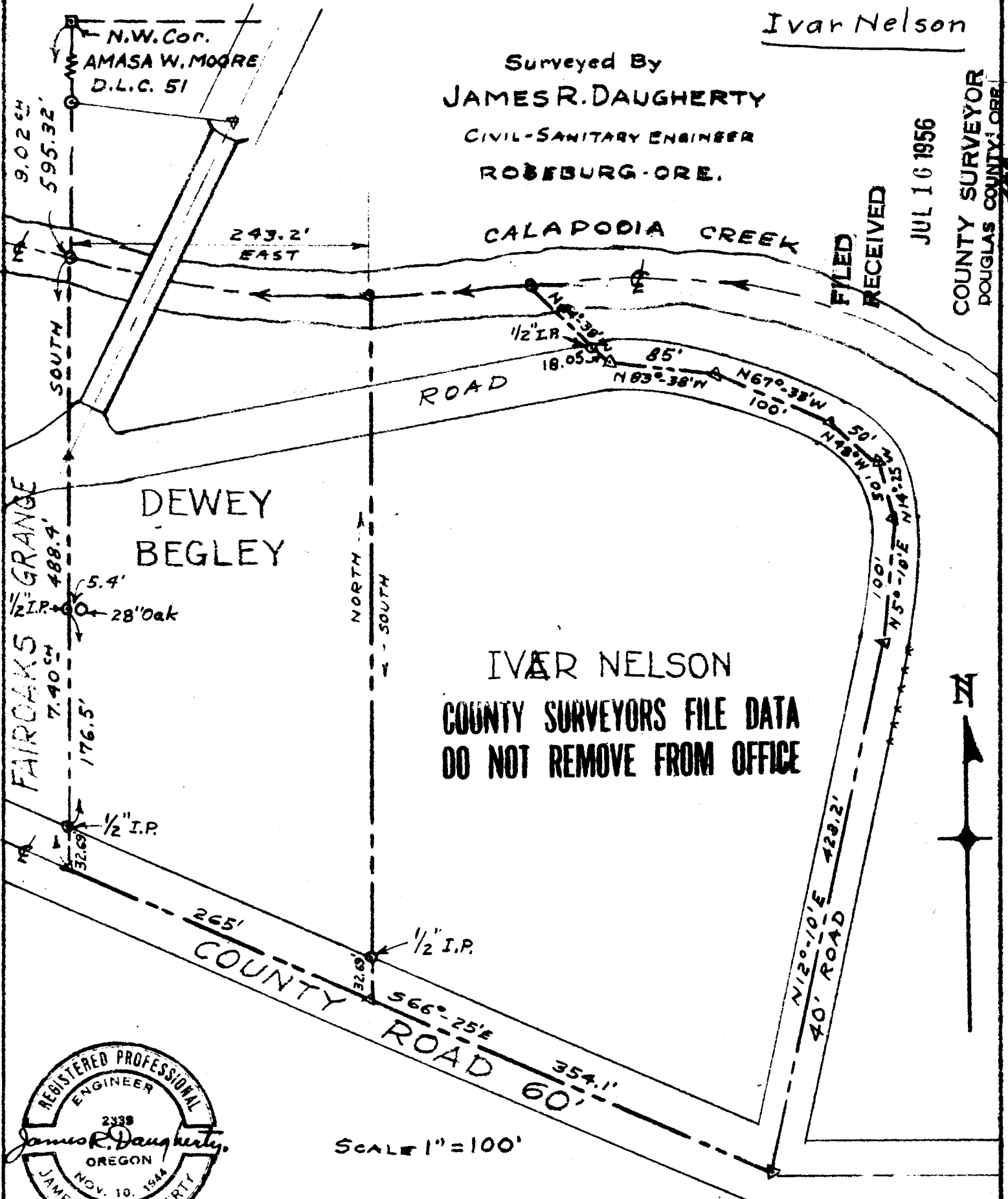
Ivar Nelson

Surveyed By
JAMES R. DAUGHERTY
CIVIL-SANITARY ENGINEER
ROSEBURG - ORE.

JUL 16 1956

COUNTY SURVEYOR
DOUGLAS COUNTY, ORE.

FILED
RECEIVED



IVAR NELSON
COUNTY SURVEYORS FILE DATA
DO NOT REMOVE FROM OFFICE

SCALE 1" = 100'

July 12, 1956.

C. S. File No. 42/147

