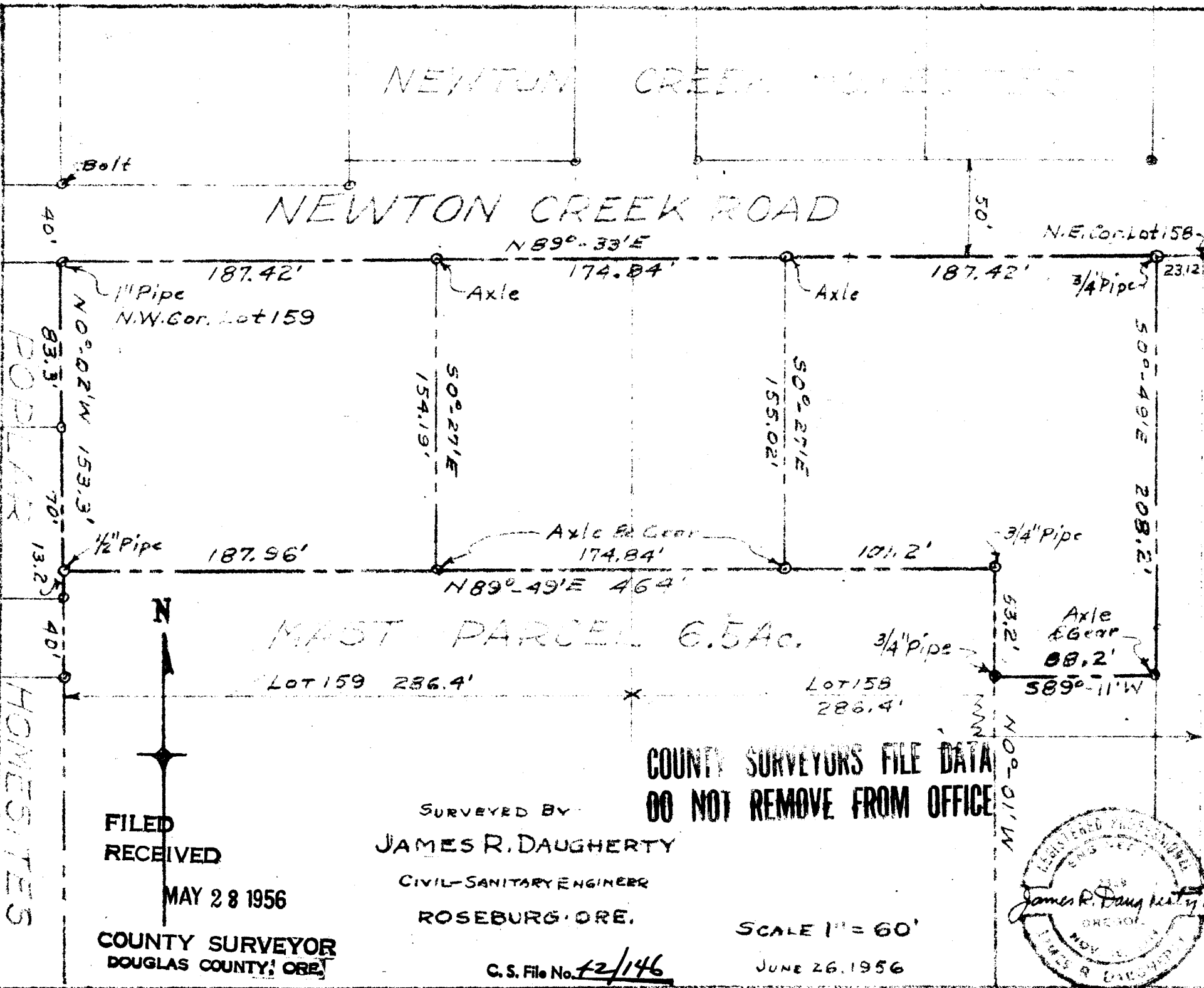
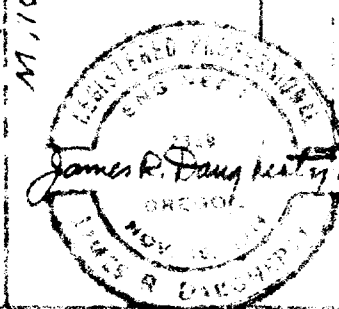


J.C. COOPER PARCELS IN LOTS 158 & 159. TRACT 1
ROSEBURG ORCHARDS CO. DOUGLAS COUNTY, ORE.



POPLAR HOMESITES

COUNTY SURVEYORS FILE DATA
DO NOT REMOVE FROM OFFICE



FILED
RECEIVED
MAY 28 1956
COUNTY SURVEYOR
DOUGLAS COUNTY, ORE.

SURVEYED BY
JAMES R. DAUGHERTY
CIVIL-SANITARY ENGINEER
ROSEBURG, ORE.

C. S. File No. 42/146

SCALE 1" = 60'
JUNE 26, 1956

Sec 1, T 27S, R 6W