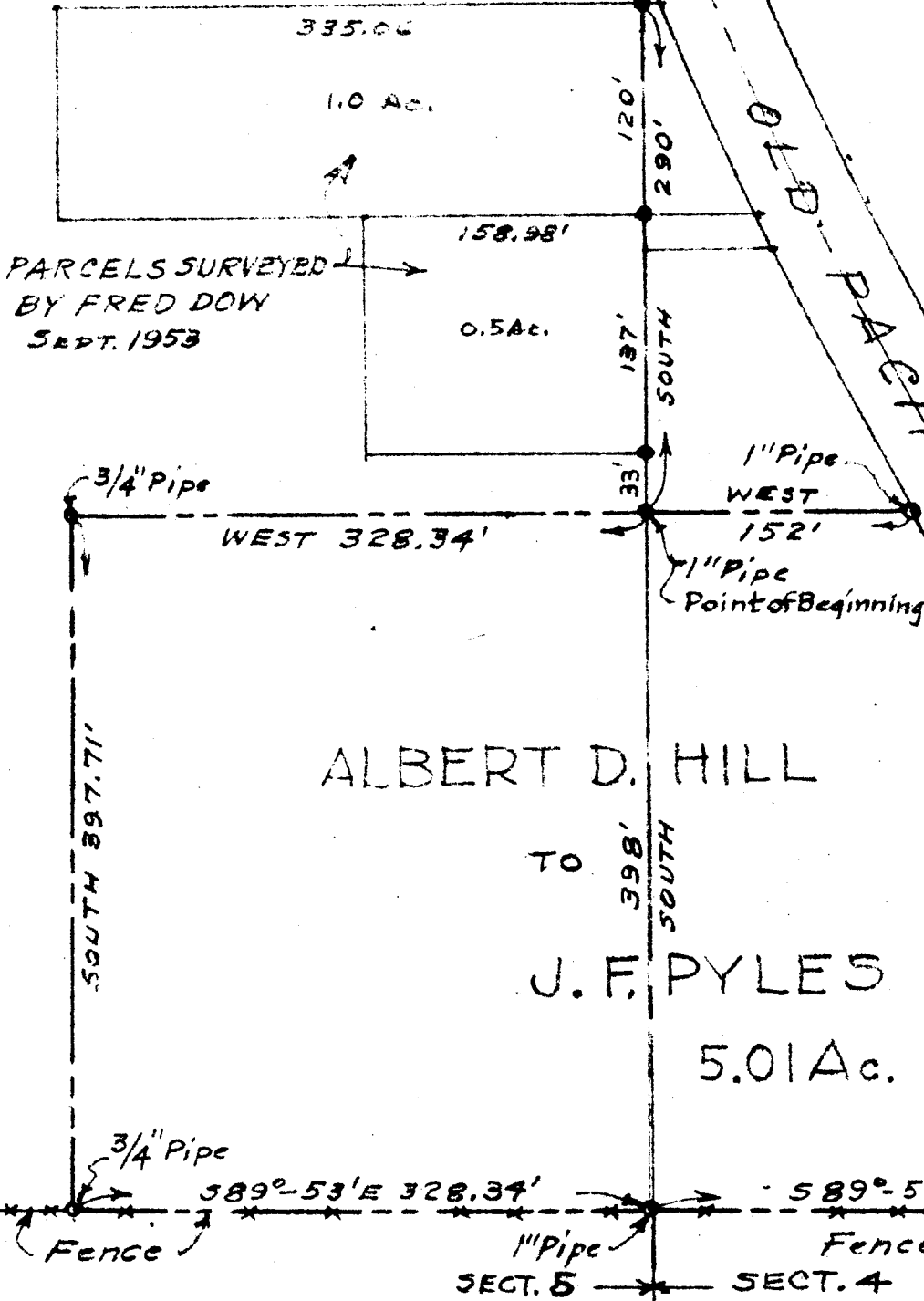


ALBERT D. HILL PARCELS - SECTIONS 4 & 5 - T25S - R5W - W.M.

DOUGLAS COUNTY
OREGON

T24S 32 | 33
T25S 5 | 4

N.E. Cor. of S.E. 1/4 of
the N.E. 1/4 of the N.E. 1/4 of Sect. 5



COUNTY SURVEYORS FILE DATA
DO NOT REMOVE FROM OFFICE

FILED
RECEIVED

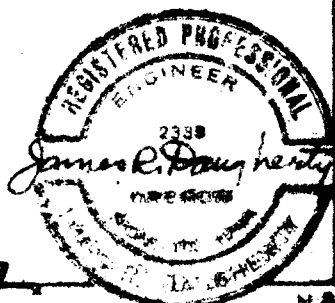
JUN 8 1956

COUNTY SURVEYOR
DOUGLAS COUNTY, ORE.

ALBERT D. HILL
TO
J. F. PYLES
5.01 Ac.

SCALE 1" = 100'

SURVEYED BY
JAMES R. DAUGHERTY
CIVIL-SANITARY ENGINEER
ROSEBURG - ORE.



JUNE 8, 1956.

C.S. File No. 42/137