

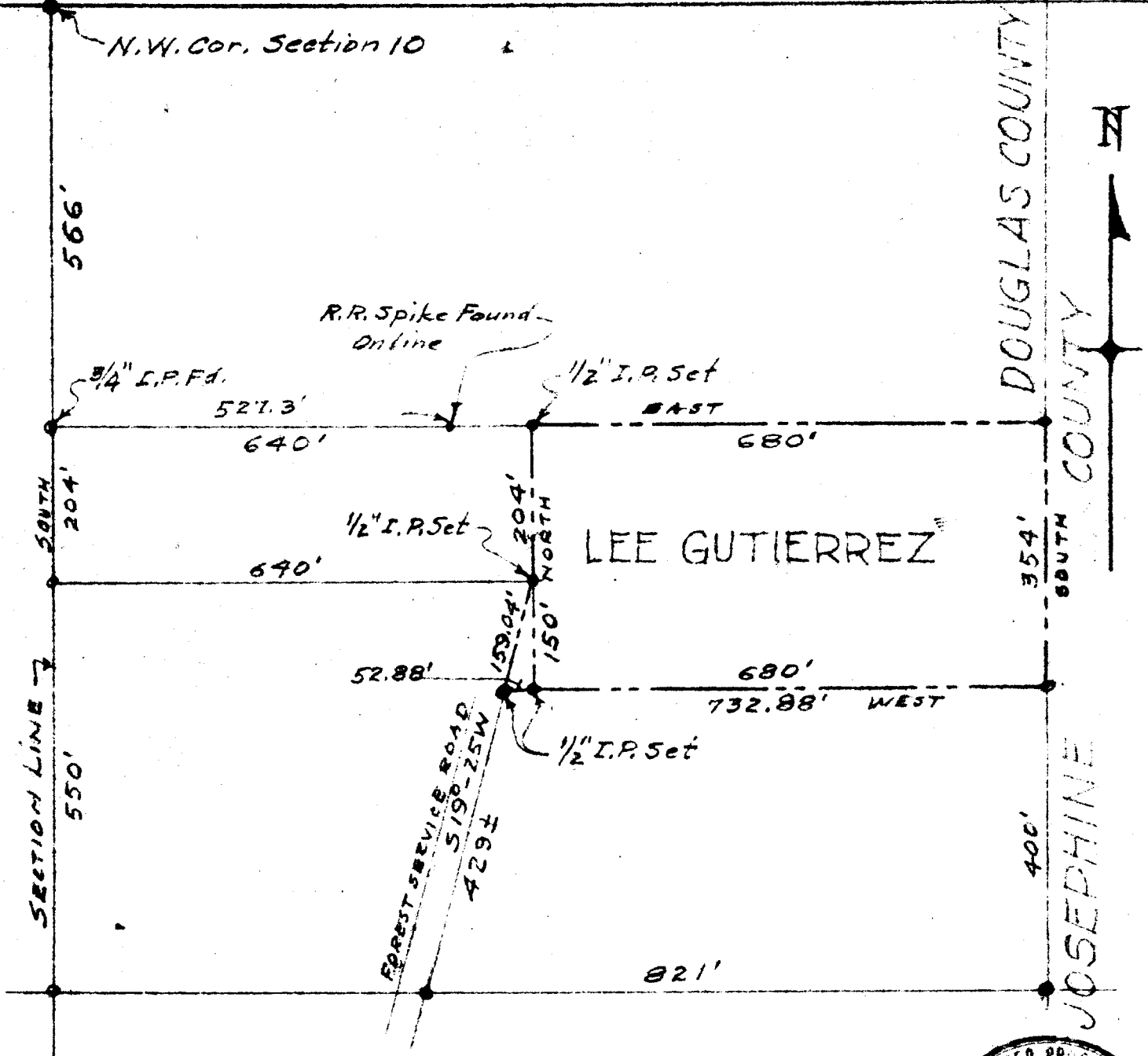
PARCEL IN N.W. 1/4 OF NW 1/4 SECTION 10 T33S R6W W.M.

JOSEPHINE COUNTY
OREGON

Surveyed For
LEE GUTIERREZ
GLENDALE, ORE.

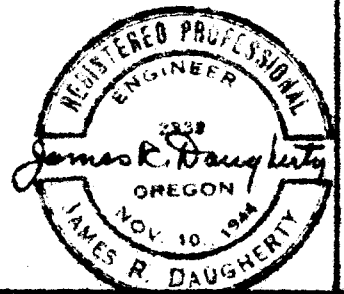
COUNTY SURVEYORS FILE DATA
DO NOT REMOVE FROM OFFICE

FILED
RECEIVED
MAY 15 1956
COUNTY SURVEYOR
DOUGLAS COUNTY, ORE.



SCALE 1" = 200'

SURVEYED & PLATTED BY
JAMES R. DAUGHERTY
CIVIL - SANITARY ENGINEER
ROSEBURG - ORE.



O.S. File No. 42/136

MAY 3, 1956. P