

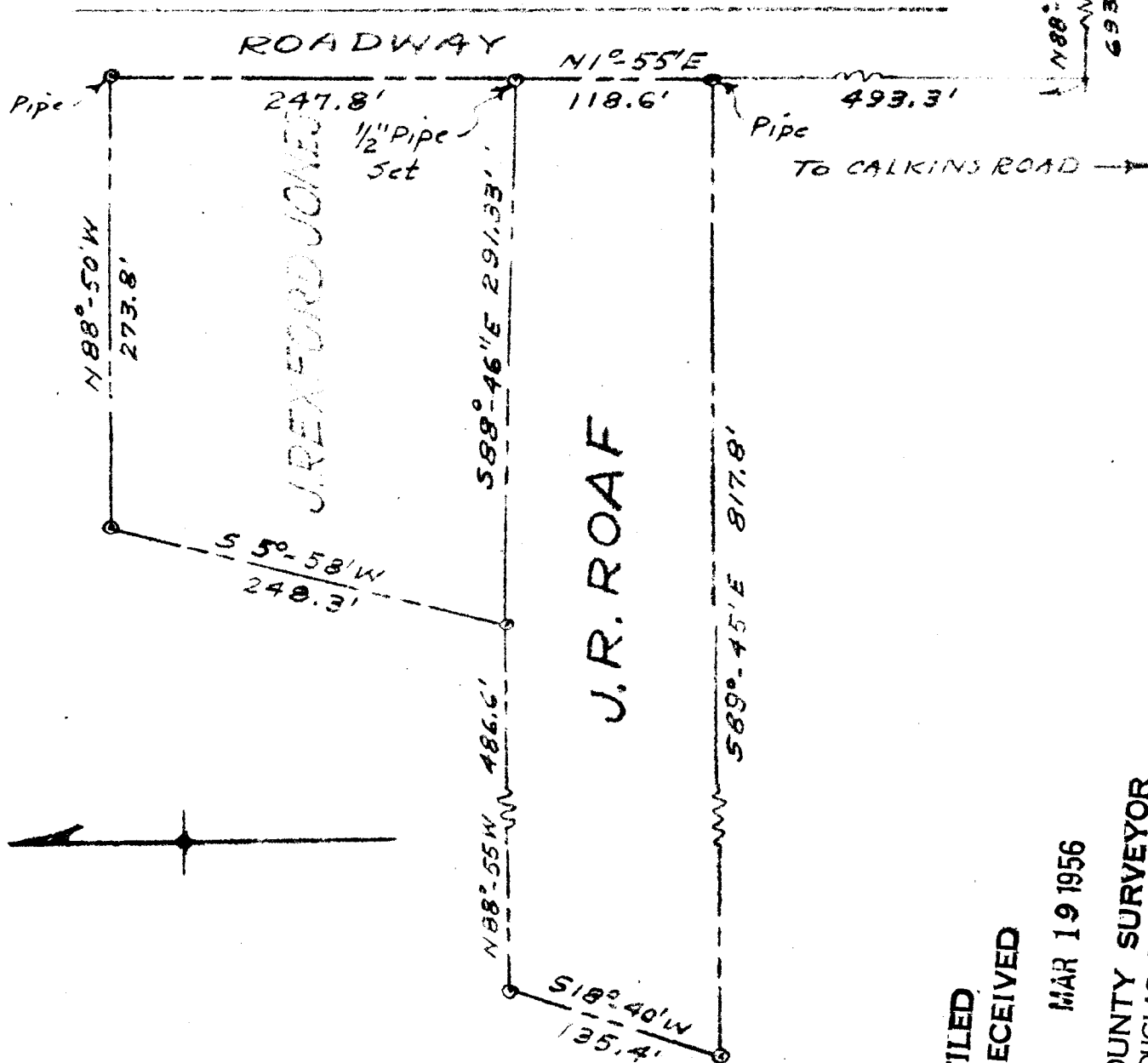
PARCELS IN SECTION 16 · T27S · R6W · W.M. · DOUGLAS COUNTY

OREGON

J. R. ROAF

COUNTY SURVEYORS FILE DATA  
DO NOT REMOVE FROM OFFICE

1/4 con.  
SECT. 15  
SECT. 16



FILED  
RECEIVED

MAR 19 1956

COUNTY SURVEYOR  
DOUGLAS COUNTY, ORE.

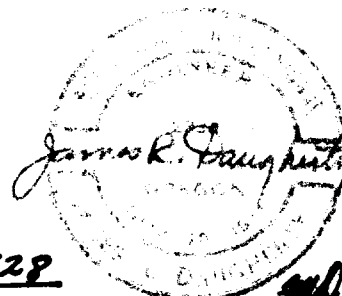
PLATTED BY

JAMES R. DAUGHERTY

CIVIL-SANITARY ENGINEER

ROSEBURG, ORE.

SCALE 1" = 100'



Mar. 16, 1956.

J. R. ROAF JOB C. S. File No. 42/128