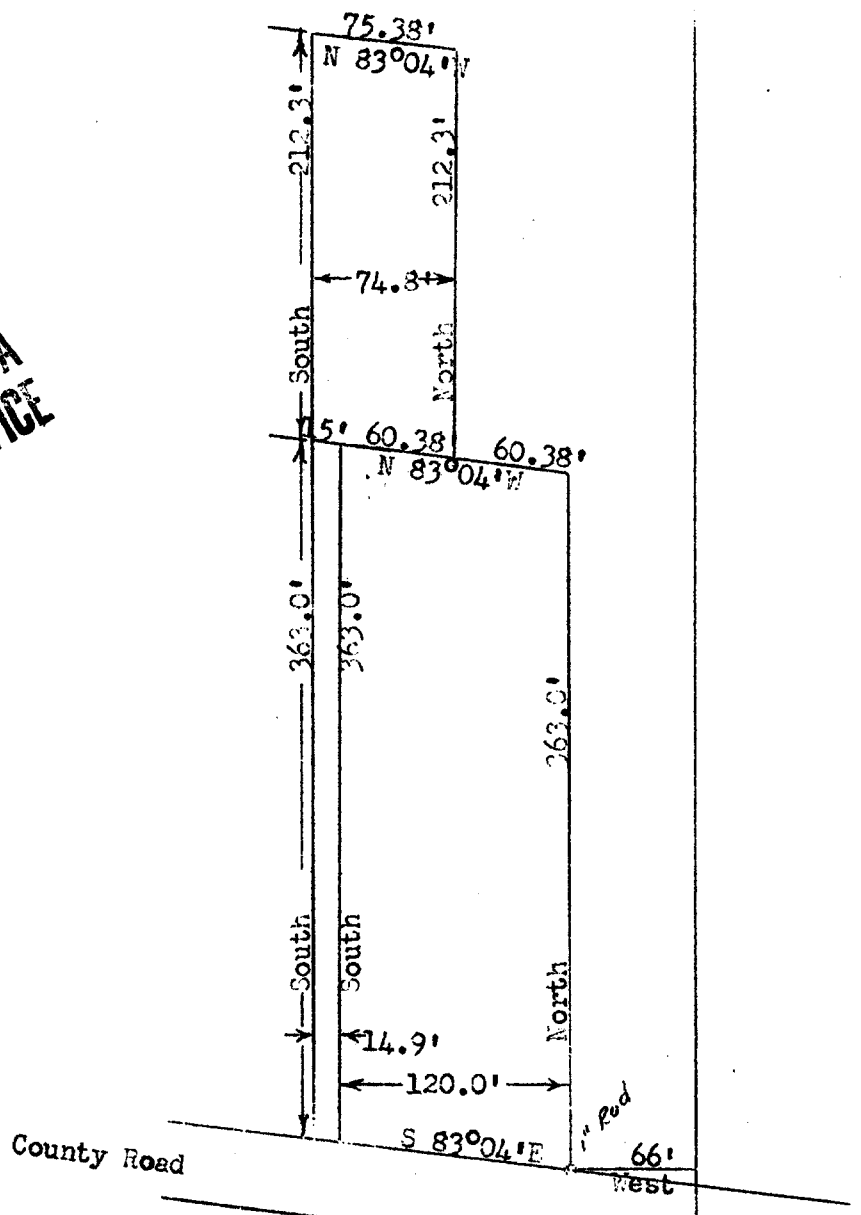


COUNTY SURVEYORS FILE DATA
DO NOT REMOVE FROM OFFICE

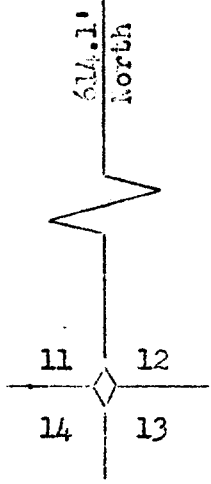


SURVEY OF CLEVELAND PROPERTY
Section 11, Township 32 South, Range 5 West of W.M.
Douglas County, Oregon
Scale: 1" = 50' 2-22-56

Description:

Beginning at the corner of Sections 11, 12, 13, 14, T 32 S, R 5 W, W.M. thence North for 614.1 feet, thence West for 66 feet, thence North 83°04' W for 120.76 feet to true point of beginning. Thence N 83°04' W for 15.0 feet, thence North for 363.0 feet, thence S 83°04' E for 15.0 feet, thence South for 363.0 feet to point of beginning; containing 0.12 acre.

Also beginning at the corner of Sections 11, 12, 13, 14, T 32 S, R 5 W, W.M., thence North for 977.1 feet, thence West for 66 feet, thence N 83°04' W for 60.38 feet to true point of beginning. Thence N 83°04' W for 75.38 feet, thence North for 212.3 feet, thence S 83°04' E for 75.38 feet, thence South for 212.3 feet to point of beginning; containing 0.37 acre.



AWB

P