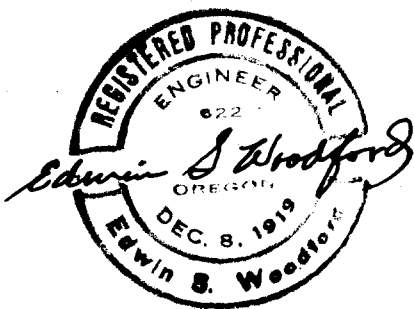
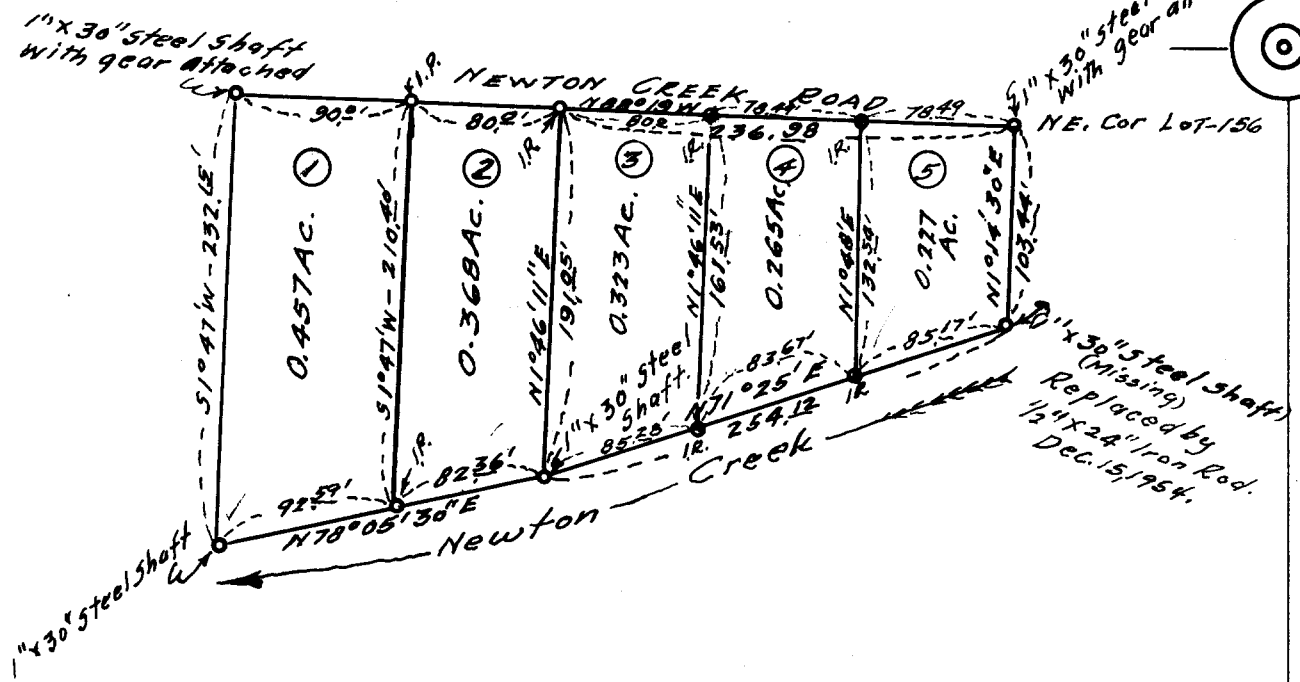
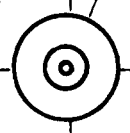
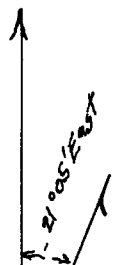


COUNTY SURVEYORS FILE DATA  
DO NOT REMOVE FROM OFFICE

MAP  
SHOWING PORTION  
OF  
LOTS - 156<sup>9d</sup> / 157  
TRACT - I. PLAT - I.  
ROSEBURG ORCHARD COMPANY.  
Sec. 6 - Tp. 27S - Rg. 5 W. WM.  
Scale - 1" = 100'

N



FILED  
RECEIVED

JAN 18 1956

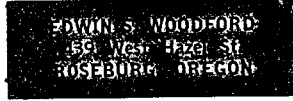
COUNTY SURVEYOR  
DOUGLAS COUNTY

WOODFORD FILE NO.

148

EDWIN S. WOODFORD

REGISTERED CIVIL ENGINEER

~~PHONE 3-7093~~ - PHONE 3-7093

SURVEYED FOR - Joe Cole.

DATE OF SURVEYED - December 1954.

OBJECT OF SURVEY - Lay off 5 parcels of land.

Location of Land Surveyed - Sec. 6 Tp. 27S - Rg 5W  
W.M.

Type of Map Filed - Cloth Tracing.

DESCRIPTION OF LANDS SURVEYED

See Accompanying sheets.

(CS folder contains MORE INFO.)

FILED  
RECEIVED

JAN 18 1956

COUNTY SURVEYOR  
DOUGLAS COUNTY, OREGON