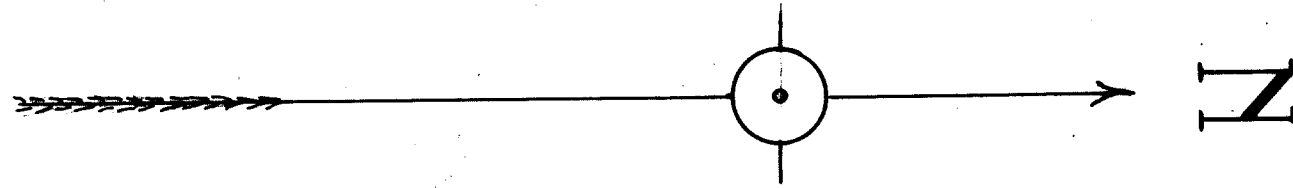
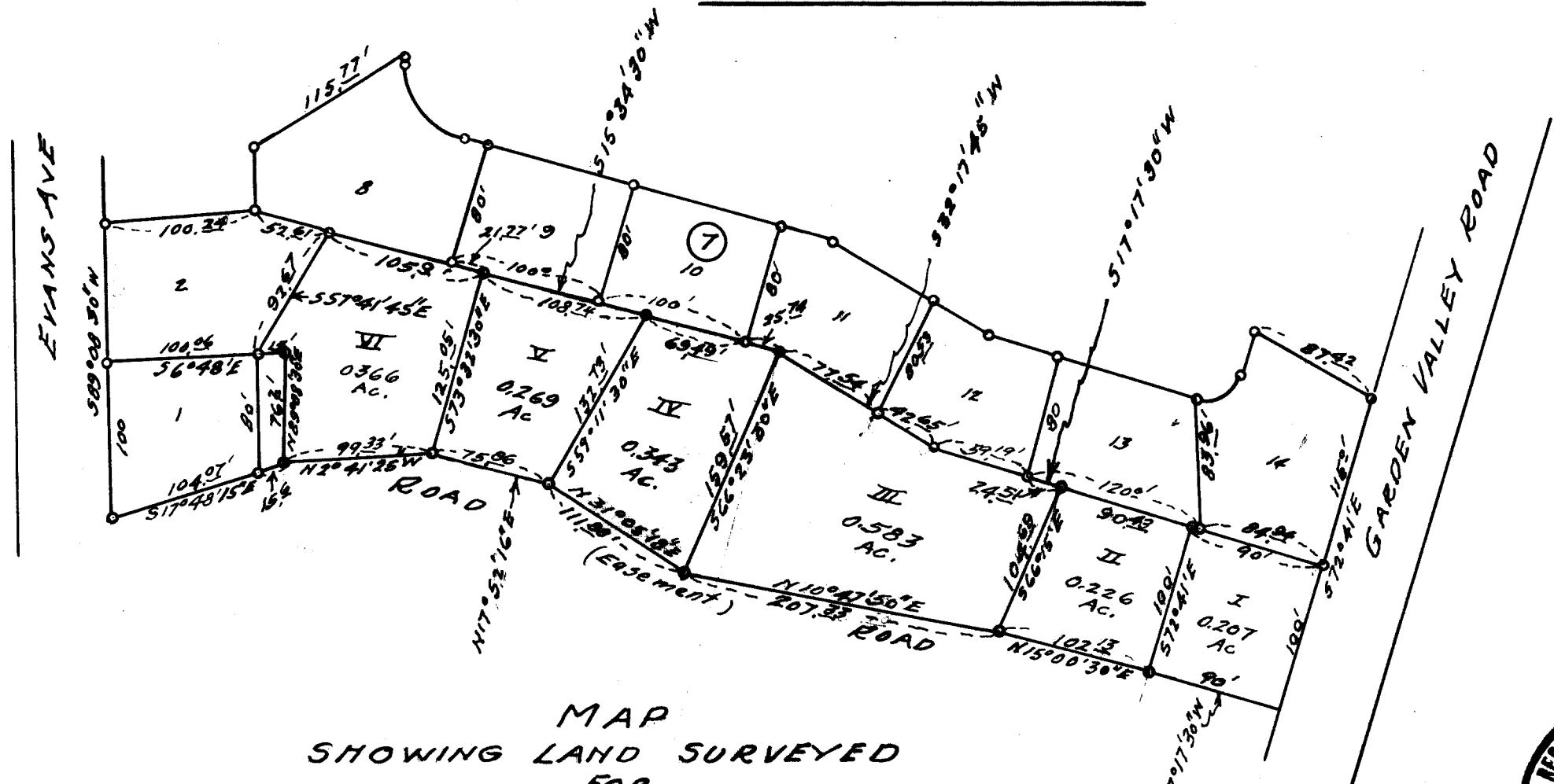


COUNTY SURVEYORS FILE DATA  
DO NOT REMOVE FROM OFFICE



HUCREST-PLATA.



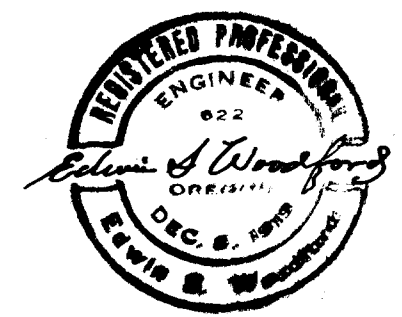
MAP  
SHOWING LAND SURVEYED  
FOR

CECIL HUGH  
SECTION 11 TP. 27S-R6.6W WM.  
Scale-1"=100'.      OCTOBER 1954.

FILED  
RECEIVED

JAN 18 1956

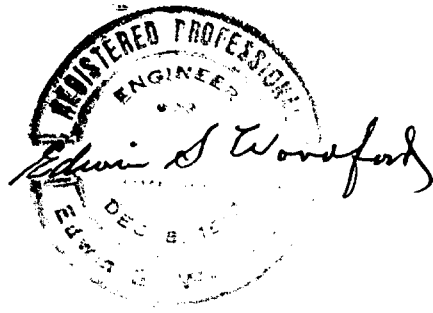
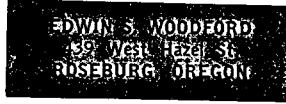
COUNTY SURVEYOR  
DOUGLAS COUNTY.



C. S. File No. 42/116A

Woodford File No  
128

EDWIN S. WOODFORD  
REGISTERED CIVIL ENGINEER  
PHONE 3-7093



Surveyed for Cecil Hugh

Date of Survey Oct 1954

Object of Survey - Layout lots East of HUCREST  
PLATA.

Location of Lands - Sec 11 Tp 27S - Rg 6 W W M

Type of Map Filed - Cloth Tracing

DESCRIPTION OF LAND SURVEYED

(CS FOLDER CONTAINS MORE INFO)

FILED  
RECEIVED

JAN 13 1956

COUNTY SURVEYOR  
DOUGLAS COUNTY.