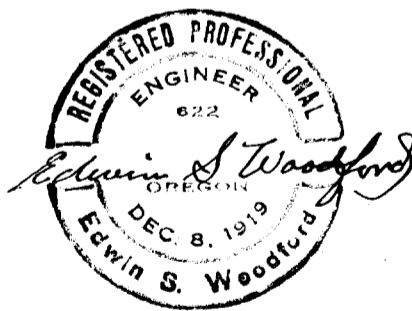
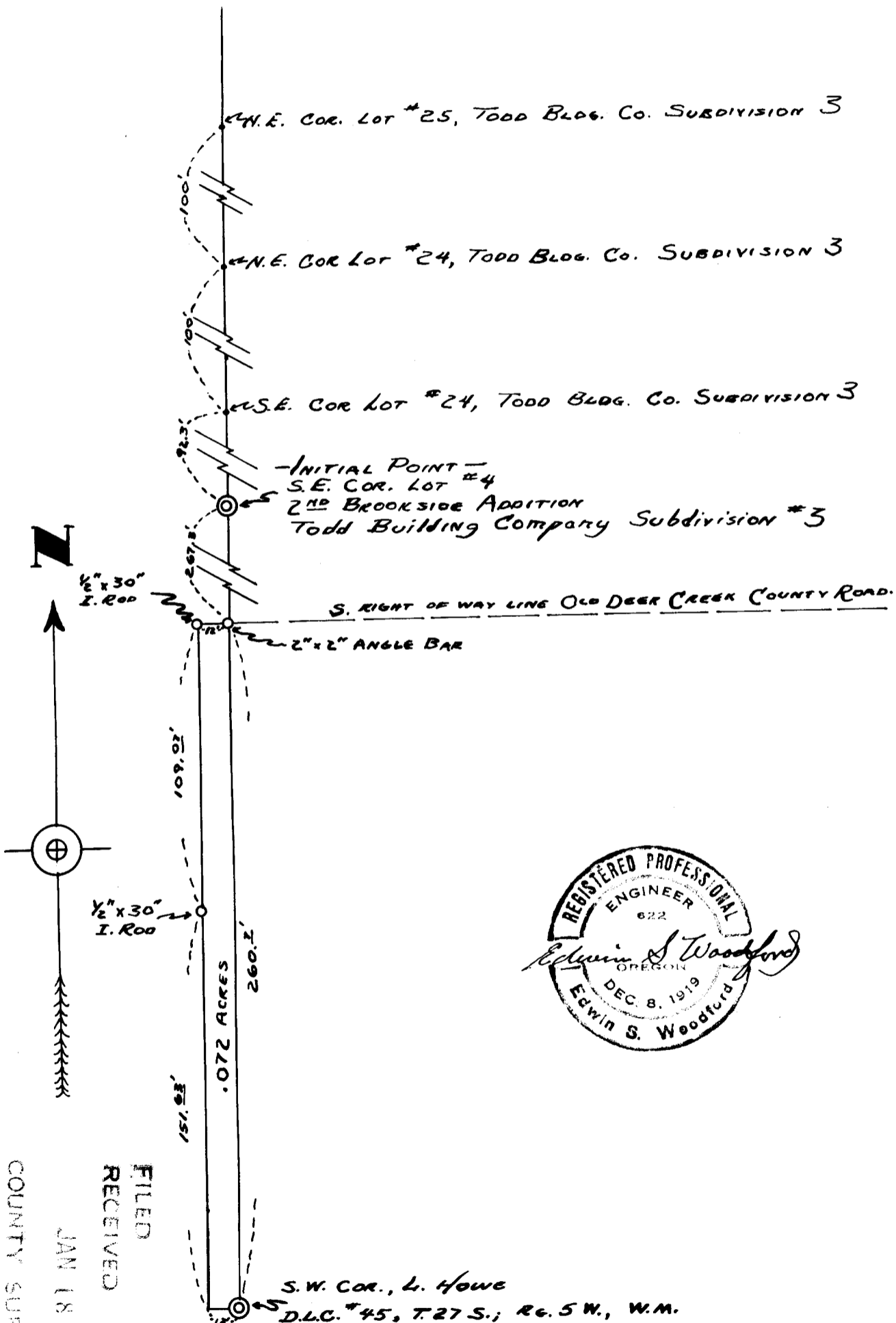


COUNTY SURVEYORS FILE DATA
MAP DO NOT REMOVE FROM OFFICE

of
 LANDS SURVEYED IN 2ND BROOKSIDE ADDITION
 TO ROSSBURG, FOR
 NICK BARTON



FILED
 RECEIVED

JAN 18 1936

COUNTY SURVEYOR
 DOUGLAS COUNTY, ORE.

C. S. File No. 42/113A

SEL. 20, T.27 S., R.5 W.

JMD

Woodford FILE NO.
102

EDWIN S. WOODFORD
REGISTERED CIVIL ENGINEER
1027 Front St. • PHONE 3-7093



SURVEYED FOR - NICK BARTON
DATE OF SURVEY - AUGUST, 1955
OBJECT OF SURVEY - Lay off 12.0 ft strip of
land along West side of Nick Barton property.
Location of Land SURVEYED - 2nd Brookside Ave.
to Roseburg, Ore.
Type of Map Filed - Cloth Tracing.

DESCRIPTION OF LAND SURVEYED

SEE ACCOMPANYING SHEET

(CS Folder has more info)

FILED
RECEIVED

JAN 18 1956

COUNTY SURVEYOR
DOUGLAS COUNTY, ORE.

C. S. File No. 42/113 b