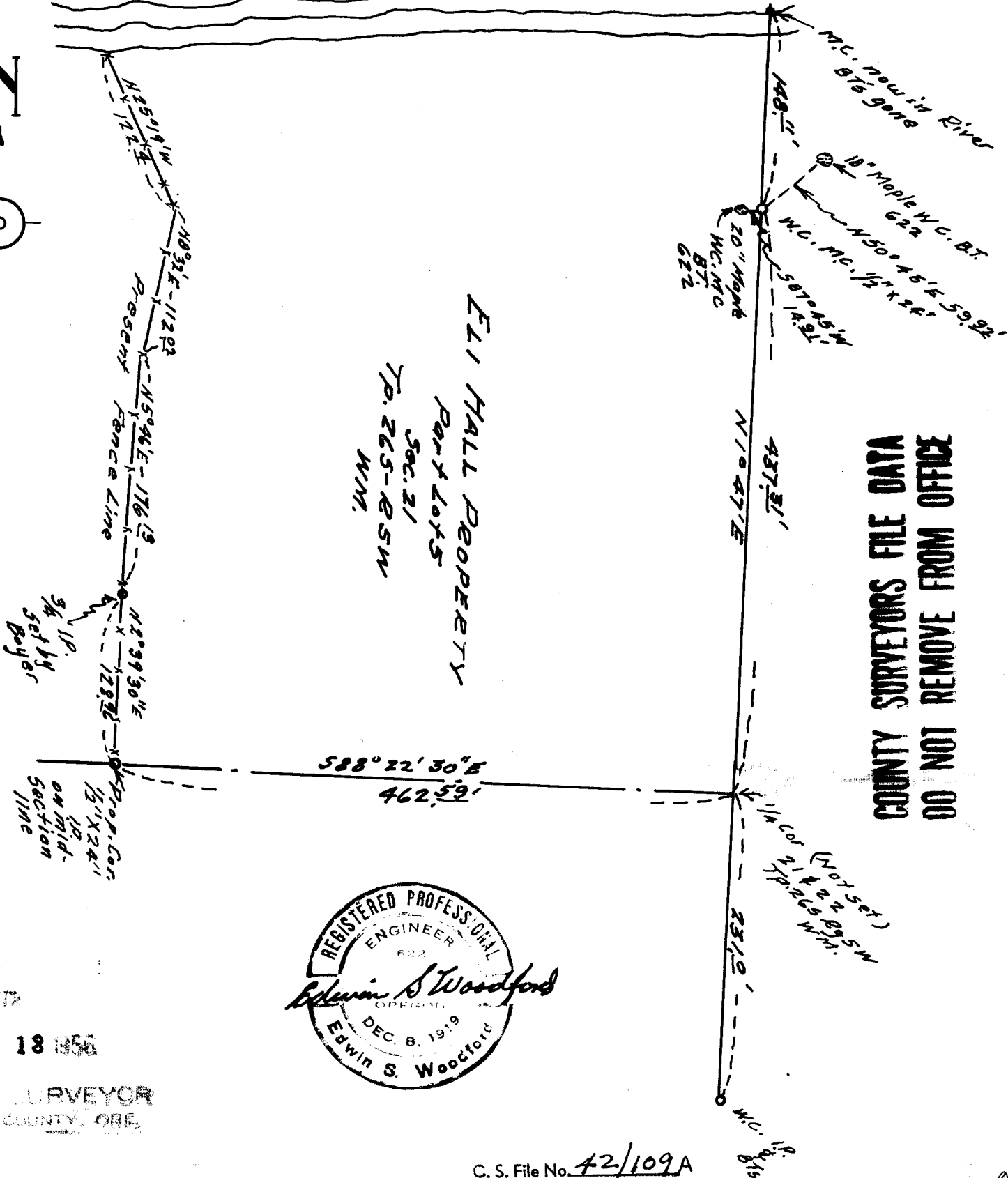


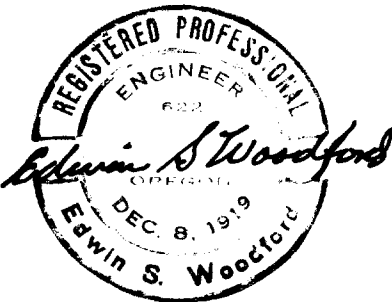
MAP  
OF  
PART OF LOT 5  
SEC. 21 TP. 26S RG. 5W  
WM.

Scale - 1" = 100' August 1953.

← NORTH UMPQUA RIVER →



COUNTY SURVEYORS FILE DATA  
DO NOT REMOVE FROM OFFICE



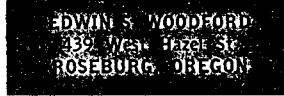
FILED  
RECEIVED  
JAN 18 1956  
COUNTY SURVEYOR  
WASCO COUNTY, ORE.

C. S. File No. 42/109A

WOODFORD FILE NO.  
132

EDWIN S. WOODFORD  
REGISTERED CIVIL ENGINEER

~~ROSEBURG~~ - PHONE 3-7093



SURVEYED FOR - ELI HALL

DATE OF SURVEY - AUGUST, 1953

OBJECT OF SURVEY - TO LAY OUT, ON THE GROUND, TRUE  
LINES OF HALL PROPERTY, LYING EAST OF PRESENT  
FENCE LINE.

TYPE OF MAP FILED - CLOTH TRACING

LOCATION OF LANDS - PART LOT 5, SEC. 21, T<sub>26</sub>S R<sub>4</sub>W, W.M.

DESCRIPTION OF SURVEY

SEE ACCOMPANYING SHEET.

(CS Folder has more info.)

FILED  
RECEIVED

JAN 18 1956

COUNTY SURVEYOR  
DOUGLAS COUNTY, ORE.

C. S. File No. 42/1096