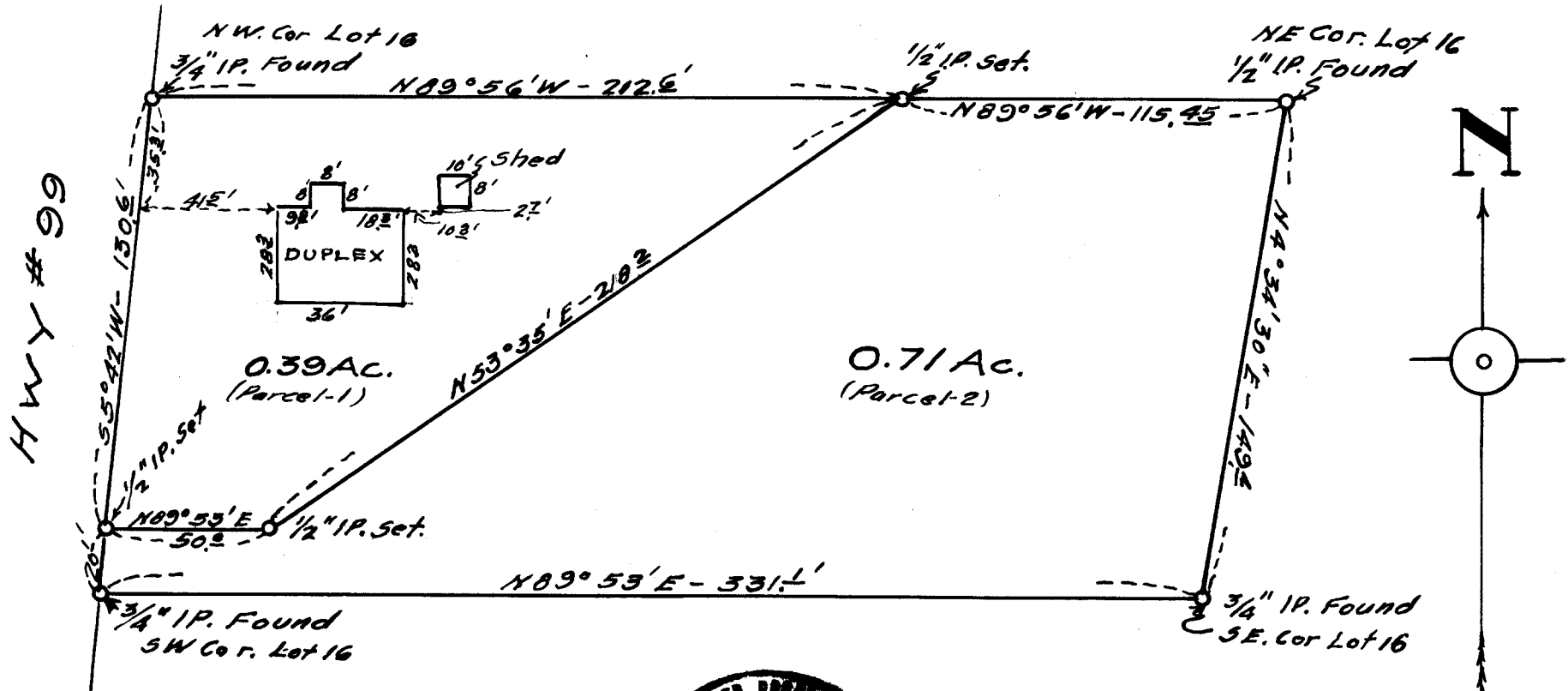


COUNTY SURVEYORS FILE DATA  
DO NOT REMOVE FROM OFFICE

MAP  
SHOWING  
DIVISION OF LOT-16.  
WINCHESTER HOME SITES  
Sections 25 & 26 Tp. 26S Rg. 6W  
WM.

Scale-1"=50

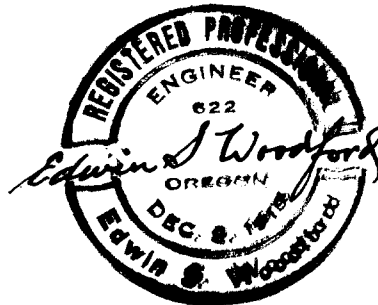
September 1952.



FILED  
RECEIVED

JAN 18 1956

COUNTY SURVEYOR  
DOUGLAS COUNTY



C. S. File No. 42/106 A

EDWIN S. WOODFORD

REGISTERED CIVIL ENGINEER

402 PRUNE ST. • PHONE 3-7093

WOODFORD FILE NO  
120

SURVEYED FOR - H.C. WONCH

DATE OF SURVEY - Sept. 1952.

OBJECT OF SURVEY - DIVISION OF LOT-16  
Winchester Home Sites.Location of Land Surveyed - Lot 16 Winchester  
Home Sites Sec. 25 & 26 T<sub>1</sub>P. 26S - R<sub>9</sub> 6W WM.

Type of Map Filed - Cloth Tracing.

DESCRIPTION OF LAND SURVEYED

See Accompanying Sheet.

(MORE INFO. IN CS FOLDER)

FILED  
RECEIVED

JAN 13 1956

COUNTY SURVEYOR  
DOUGLAS COUNTY, ORE.C. S. File No. 42/1066