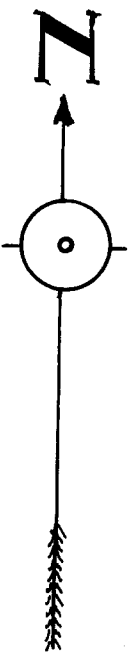
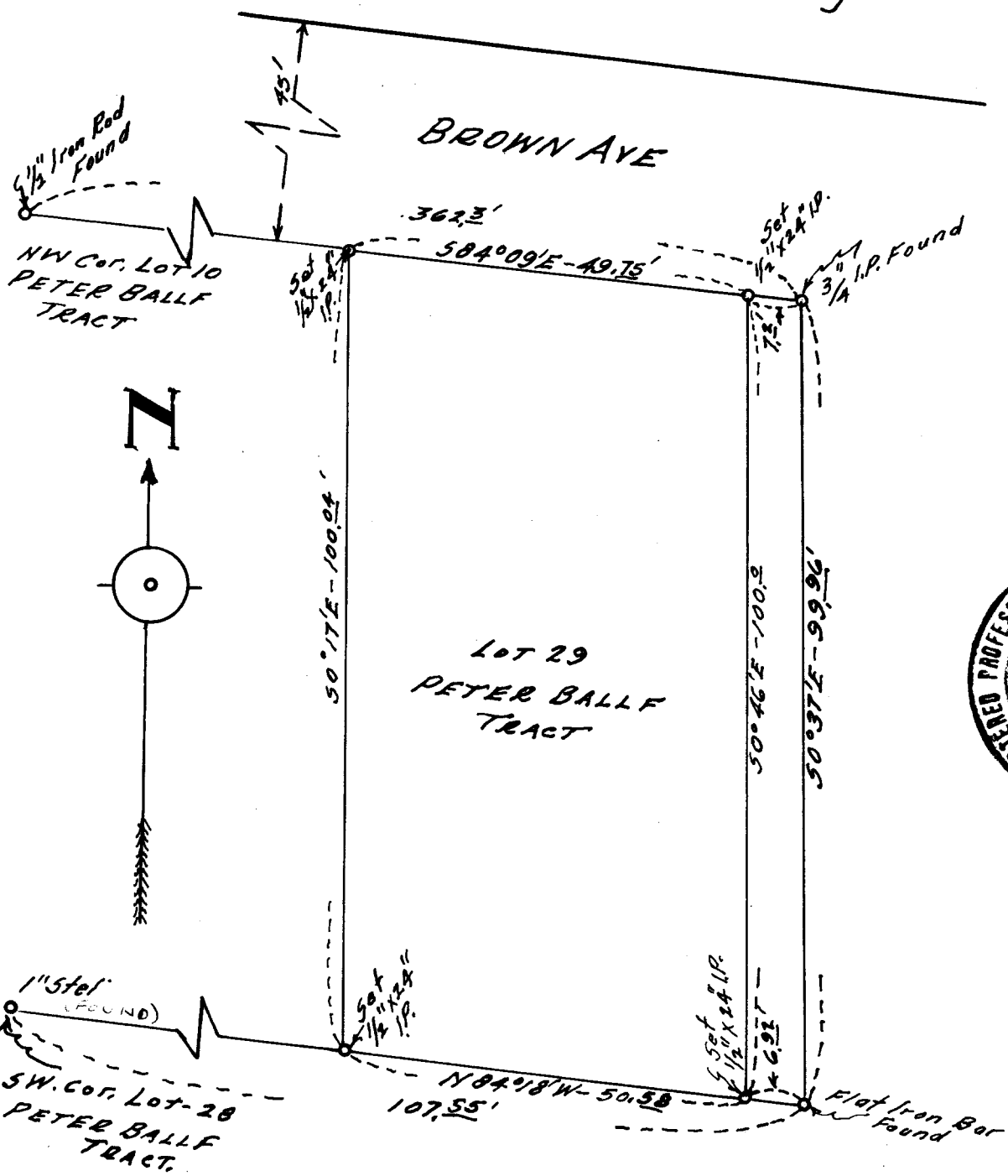


MAP  
 SHOWING SURVEY OF LOT 29.  
 PETER BALLF TRACT  
 SEC. 24 TP 275-RG 6 W W.M.  
 Scale-1"=20' January 1956.



FILED  
 RECEIVED  
 JAN 30 1956

COUNTY SURVEYOR  
 DOUGLAS COUNTY, OREGON

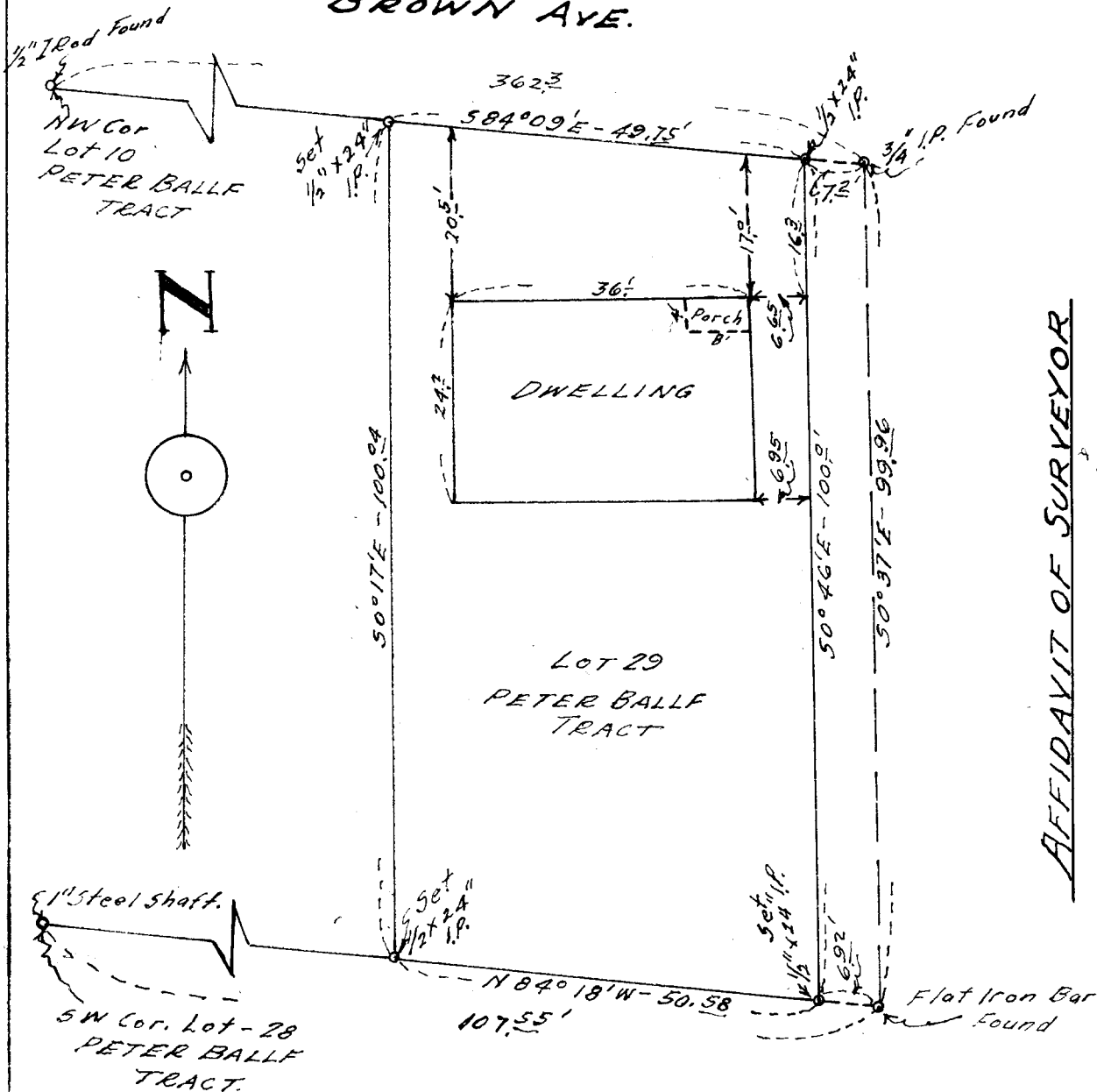
COUNTY SURVEYORS FILE DATA  
 DO NOT REMOVE FROM OFFICE

*JMD*

C. S. File No. 42/107A (2)

MAP  
SHOWING IMPROVEMENTS  
ON  
LOT 29 BALLF TRACT  
Sec. 24-TP, 27S-RG. 6 W.W.M.  
Scale-1"=20.'      January 1956.

BROWN AVE.



AFFIDAVIT OF SURVEYOR

I, Edwin S. Woodford, hereby certify that the annexed Map correctly shows the location of the Improvements on LOT-29-BALLF TRACT in Section 24 TP. 27S-RG 6 W.W.M. Signed this 30th day of January 1956

*Edwin S. Woodford*  
Reg. Prof. Eng. 622.

COUNTY SURVEYORS FILE DATA  
DO NOT REMOVE FROM OFFICE

*Edwin S. Woodford*

WOODFORD FILE NO.

149

EDWIN S. WOODFORD

REGISTERED CIVIL ENGINEER

PHONE 3-7093

EDWIN S. WOODFORD  
439 West Hazel St.  
ROSEBURG, OREGON

SURVEYED FOR - GENE FOLEY

DATE OF SURVEY - JANUARY 1956

OBJECT OF SURVEY - TO MONUMENT THE BOUNDARIES OF LOT 29

LOCATION OF LAND SURVEYED - LOT 29 - UNRECORDED PLAT OF

PETER BALLF TRACT - SEC. 24, T 27 S R 6 W OF W. M.

TYPE OF MAP FILED - CLOTH TRACING

DESCRIPTION - INFORMATION ON ACCOMPANYING MAP IS  
SELF-EXPLANATORY.FILED  
RECEIVED

JAN 30 1956

COUNTY SURVEYOR,  
DOUGLAS COUNTY, OREGON

12/104 c