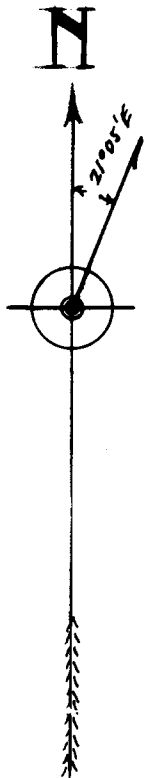
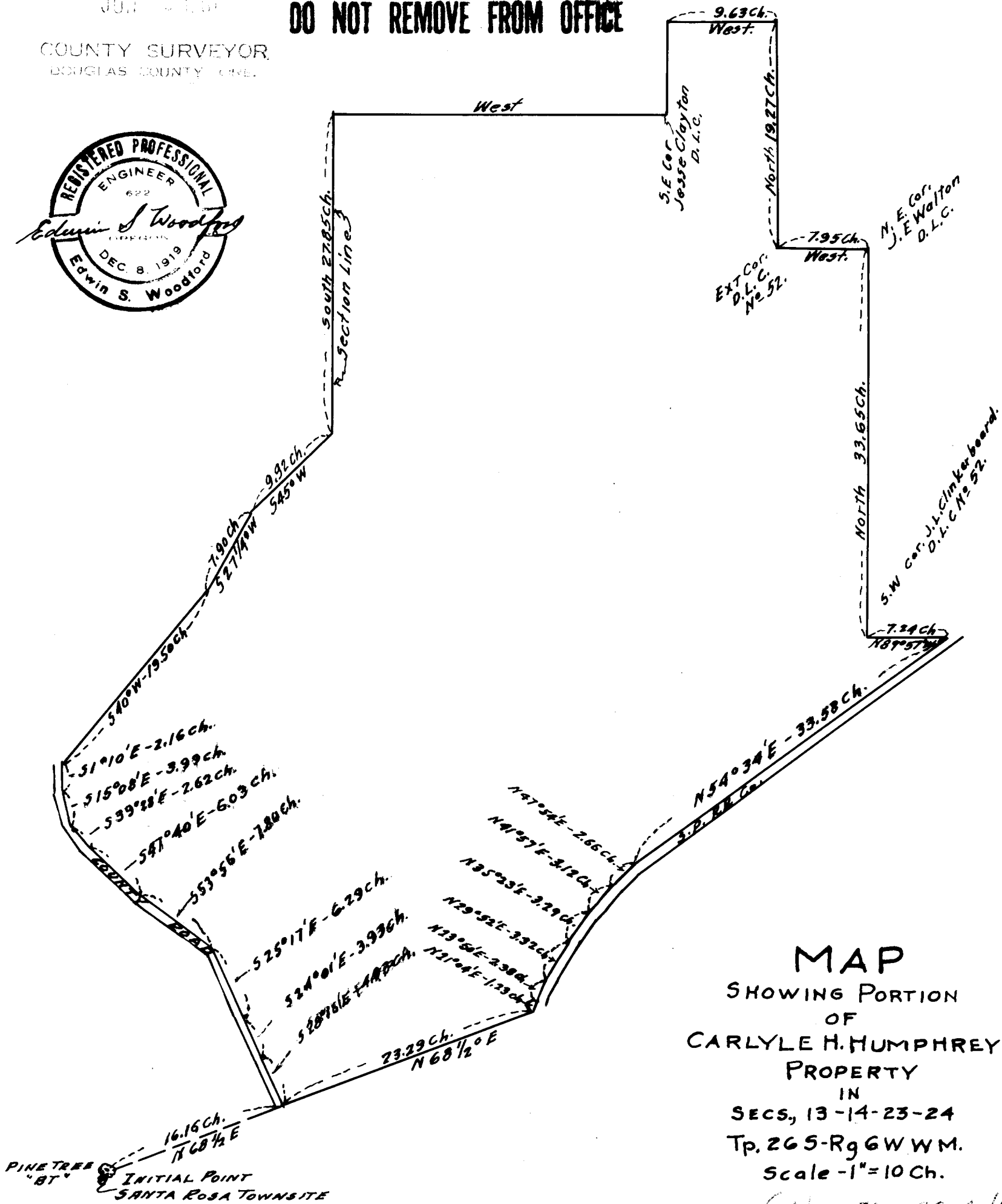
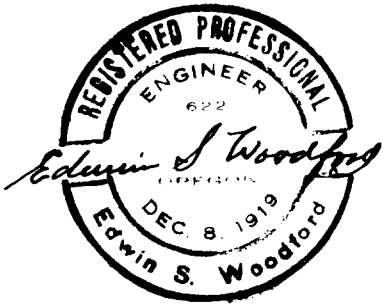


FILED
RECEIVED

JUL 2 1951

COUNTY SURVEYOR,
DOUGLAS COUNTY, ILL.

COUNTY SURVEYORS FILE DATA
DO NOT REMOVE FROM OFFICE



MAP
SHOWING PORTION
OF
CARLYLE H. HUMPHREY
PROPERTY
IN
SECS. 13-14-23-24
Tp. 26 S-Rg 6 W W.M.
Scale - 1" = 10 Ch.

(ALSO SEE CS 4/123)

CS FILE FOLDER

CONTAINS

MORE

INFORMATION

(ALSO CS 40/123)