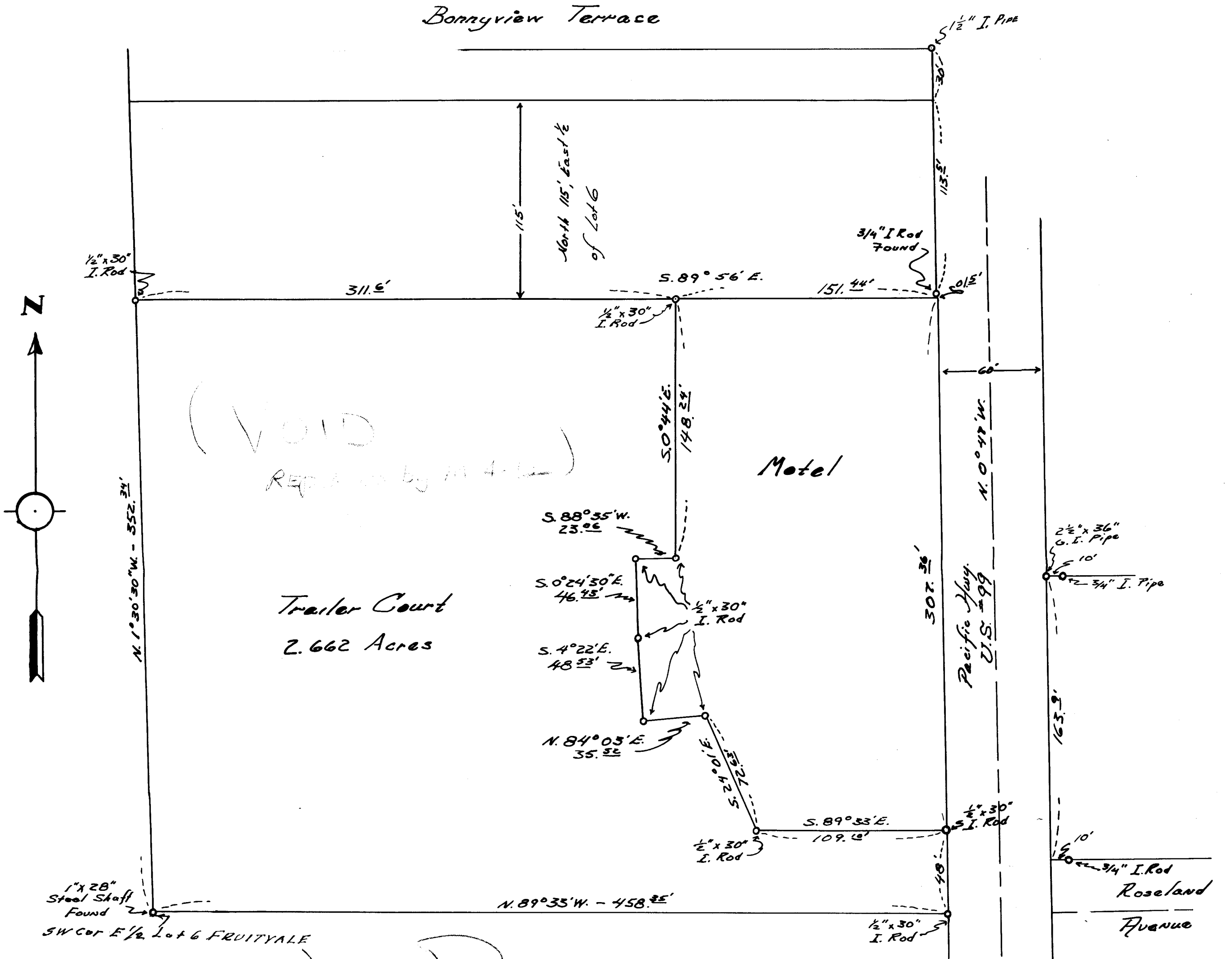


COUNTY SURVEYORS FILE DATA
 DO NOT REMOVE FROM OFFICE



VOID MAP
 of
 Part of East 1/2 of Lot 6
 Fruitvale
 Tp. 27 S - Rg 6 W W.M.

Scale - 1" = 50'

Aug. 5, 1955



FILED
 RECEIVED
 JUN 18 1955

COUNTY SURVEYOR
 DOUGLAS COUNTY

C. S. File No. 42/102

VOID

SEE M4-12 FOR MAP (2)

CS FILE FOLDER

CONTAINS

MORE

INFORMATION