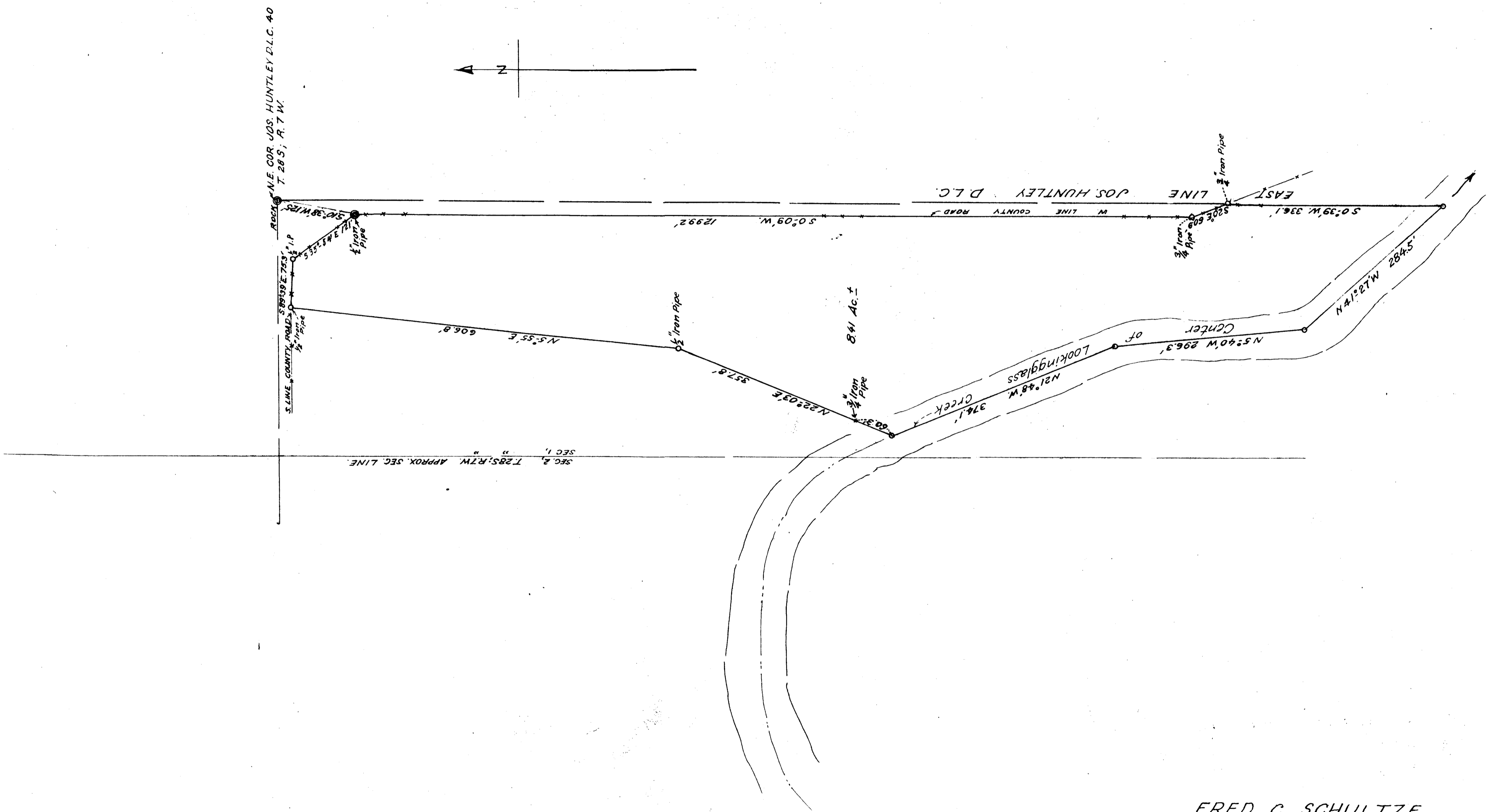


FRED C. SCHULTZE
 LOOKINGGLASS VALLEY
 IN JOS. HUNTLEY D.L.C. 40, SEC. 1, T. 28S, R. 7W.
 OCT. 1955 88. 1" = 100 FT.



FRED C. SCHULTZE,
 LOOKINGGLASS VALLEY,
 IN JOS. HUNTLEY D.L.C. 40, SEC. 1, T. 28S, R. 7W.
 OCT. 1955. 88. 1" = 100 FT.

FILED
 RECEIVED
 JAN 16 1956
 COUNTY SURVEYOR
 DOUGLAS COUNTY, ORE.

COUNTY SURVEYORS FILE DATA
 DO NOT REMOVE FROM OFFICE

C. S. File No. 42/95