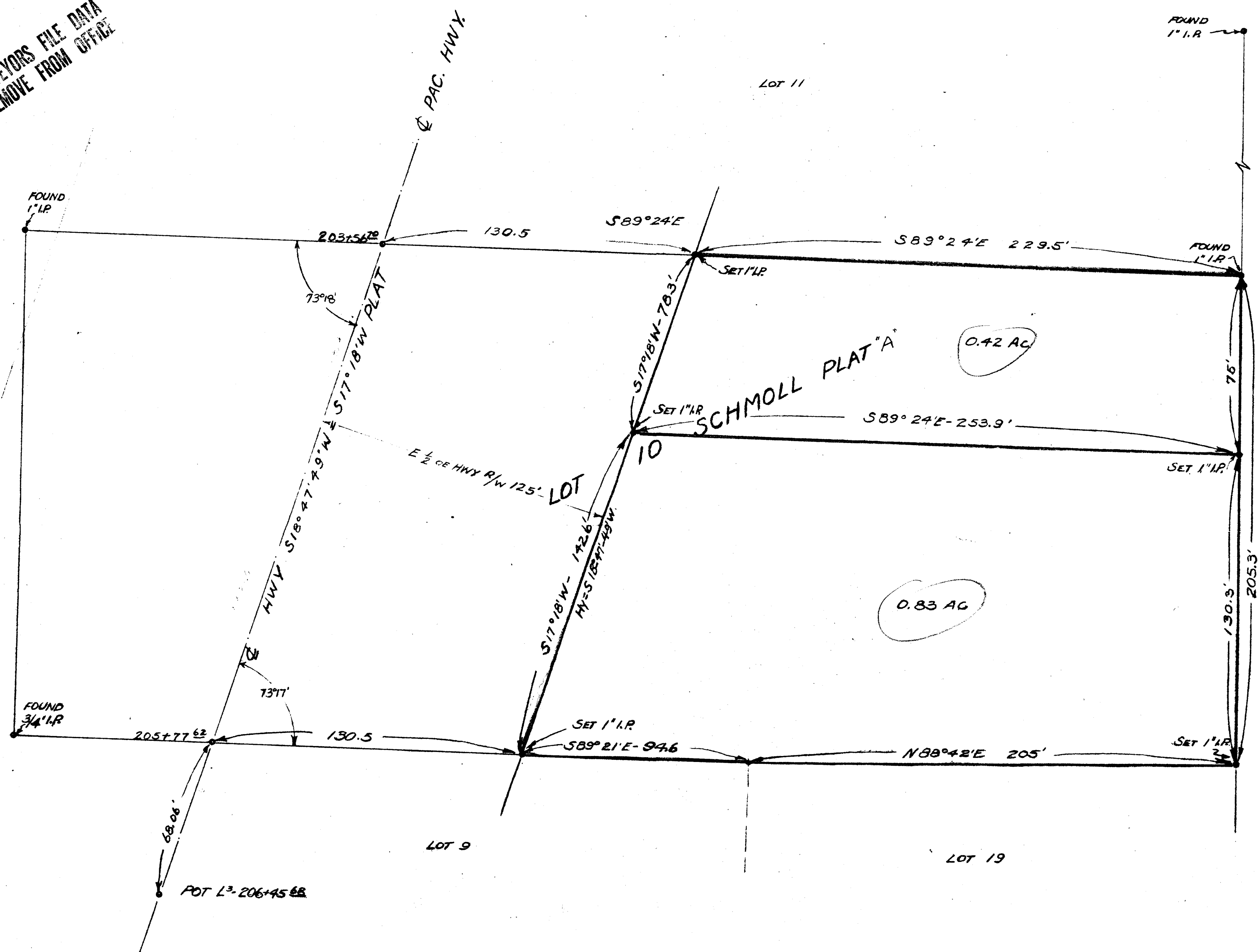


COUNTY SURVEYORS FILE DATA
DO NOT REMOVE FROM OFFICE

COUNTY SURVEYORS FILE DATA
DO NOT REMOVE FROM OFFICE



FILED
RECEIVED
JAN 16 1956
COUNTY SURVEYOR
DOUGLAS COUNTY, ORE.

COUNTY SURVEYORS FILE DATA
DO NOT REMOVE FROM OFFICE

DIVISION OF LOT 10
SCHMOLL PLAT "A"
SEC. 7, T30S, R. 5 W, W.M.
FOR - ME. M. MUNN
SCALE 1" = 30' SEP. 1955
Boyer