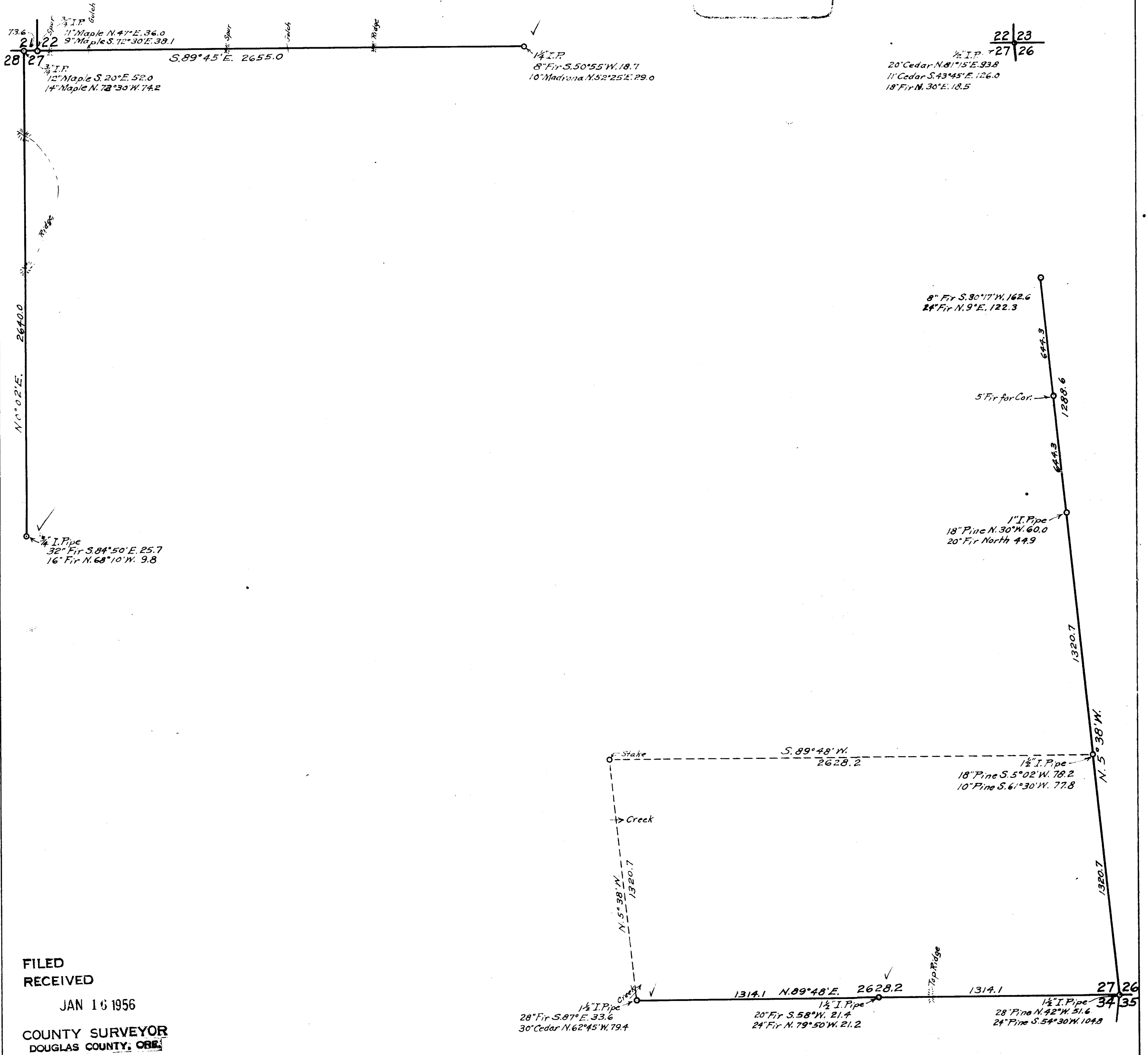


SURVEYS IN
SECTION 27, T. 32S., R. 5W., W.M.
Geo. J. Wenderoth, Surveyor

COUNTY SURVEYORS FILE DATA
DO NOT REMOVE FROM OFFICE



FILED
RECEIVED

JAN 16 1956

COUNTY SURVEYOR
DOUGLAS COUNTY, ORE.