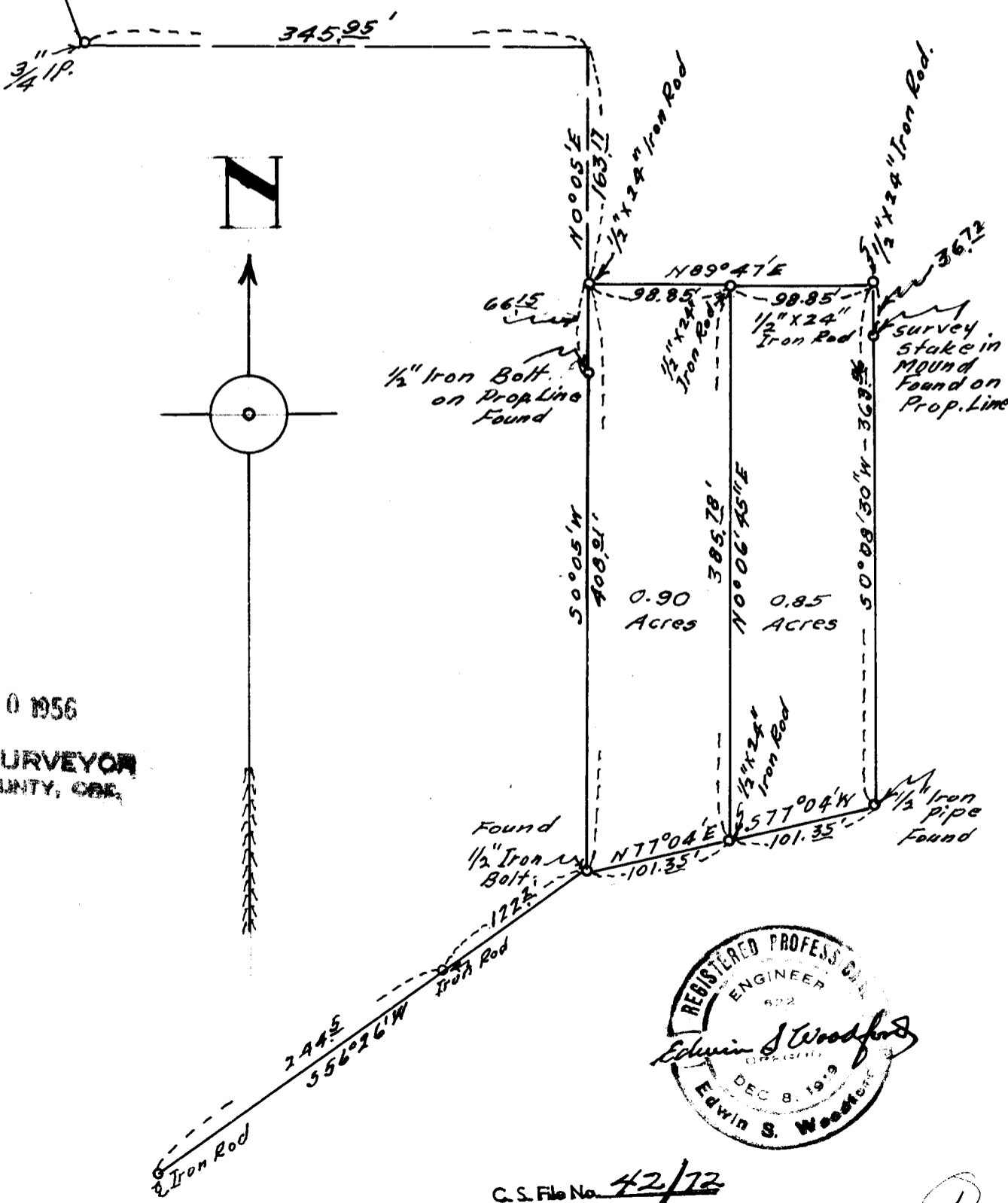


**COUNTY SURVEYORS FILE DATA  
DO NOT REMOVE FROM OFFICE**

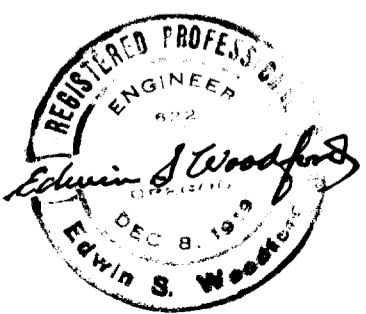
**MAP  
SHOWING LAND SURVEYED  
FOR  
JAS. B. HENNESSY  
IN  
Sec. 30 - TP. 265-R. 5 W. WM.  
Scale - 1" = 100' NOVEMBER-1955.**

NW Cor.  
Sec. 30  
Tp. 265-R. 5 W. WM.

3475'-W/1/2° 02' N



FILED  
RECEIVED  
JAN 10 1956  
COUNTY SURVEYOR  
DOUGLAS COUNTY, ORE.



C.S. File No. 42/72

CS FILE FOLDER

CONTAINS

MORE

INFORMATION