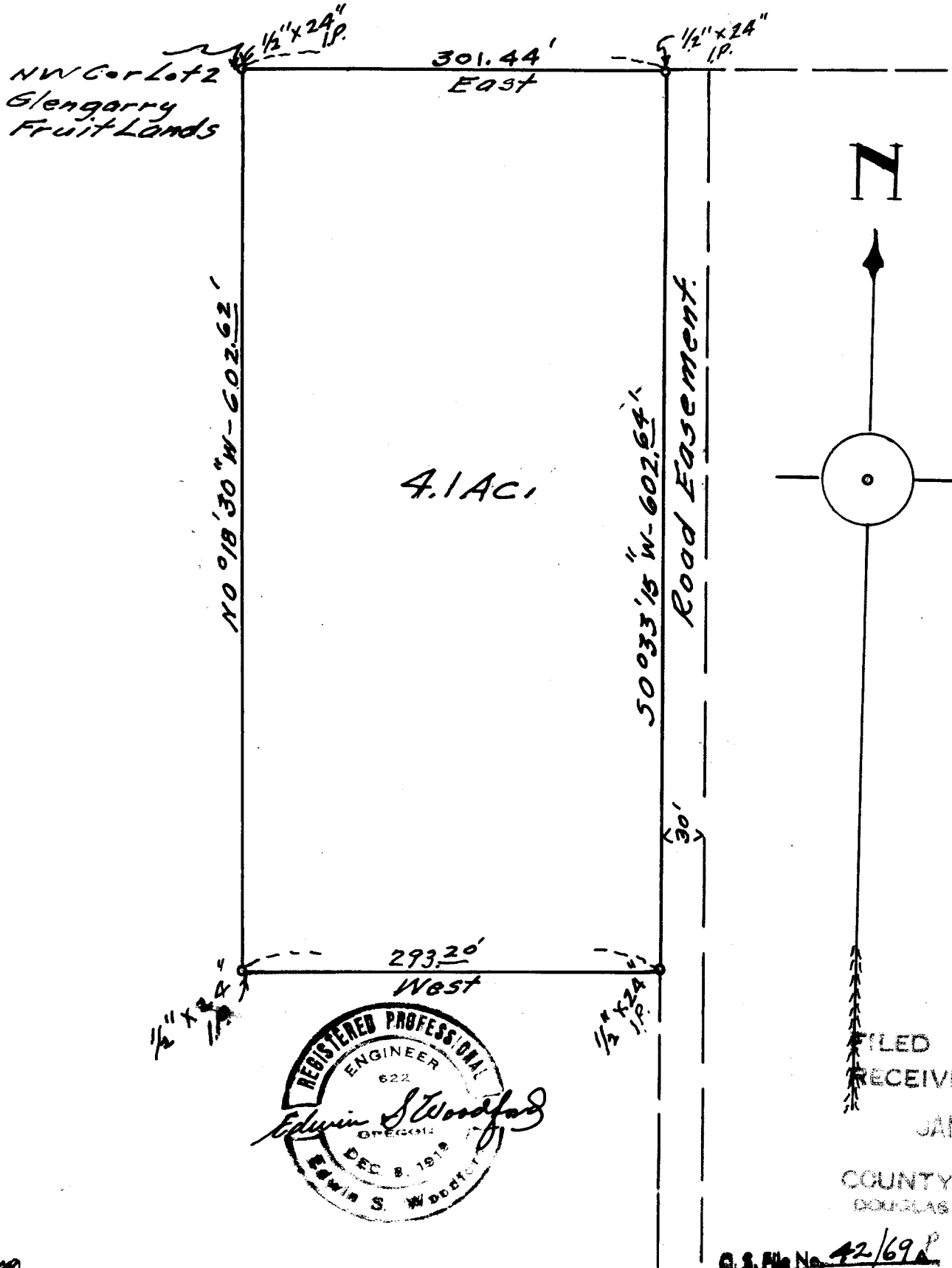


MAP
SHOWING LAND SURVEYED
FOR
W.J. WILSON
IN

LOT-2-BLK-1 GLENGARRY FRUITLANDS
Sections 13 & 28 Tp. 28S-Rg. 6W WM.
Scale-1"=100' - March 1955.



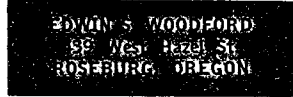
COUNTY SURVEYORS FILE DATA
DO NOT REMOVE FROM OFFICE

348

1

Woodford's File No
123.

EDWIN S. WOODFORD
REGISTERED CIVIL ENGINEER
100-PAINE ST. - PHONE 3-7093



Surveyed for - W. J. Wilson
Date of Survey - March 1955.
Object of Survey - Tract of Land in NW portion
Lot 2 Blk 1 Glengarry Fruit Lands.
Location of Lands Surveyed - Lot 2 Blk-1
Glengarry Fruit Lands - Sec 13 & 28 Tp. 28-R96W
W.M.
Type of Map Filed - Cloth Tracing.

Description of Land Surveyed
See accompanying sheet.

FILED
RECEIVED
JAN 10 1956
COUNTY SURVEYOR
DOUGLAS COUNTY, ORE.

C. S. File No. 42/69

W. J. Wilson

Description of 4.1 acre tract

Beginning at a 1/2" x 24" iron pipe at the Northwest corner of Lot 2, Glengarry Fruitlands in Sections 13 and 24, T 28 S R 6 W of Willamette Meridian, as platted and filed in the office of the County Clerk of Douglas County, Oregon:

Thence East 301.44 ft. along the North boundary of said Glengarry Fruitlands to a 1/2" x 24" iron pipe;

Thence S 0° 33' 15" W 602.64 ft. to a 1/2" x 24" iron pipe;

Thence West 293.20 ft to a 1/2" x 24" iron pipe on the West line of said Lot 2, Glengarry Fruitlands;

Thence N 0° 18' 30" W along the West line of said Lot 2 602.62 ft., to the place of beginning, containing 4.1 acres, more or less.

FILED
RECEIVED
JAN 10 1956
COUNTY SURVEYOR
DOUGLAS COUNTY, ORE.

C. S. File No. 42/69b