

COUNTY SURVEYORS FILE DATA  
DO NOT REMOVE FROM OFFICE

MAP  
SHOWING LOCATION OF PRESENT FENCE LINE  
AS  
RELATED TO TRUE LINE  
BETWEEN

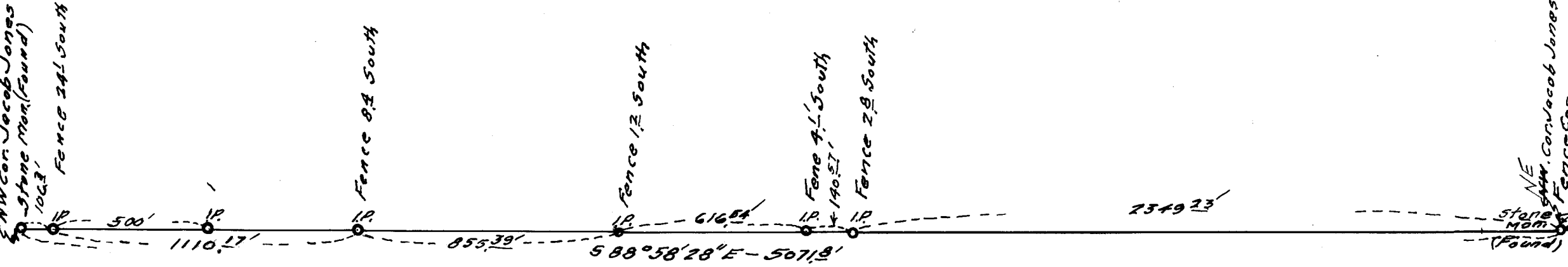
NE. COR & NW. COR OF JACOB JONES D.L.C. NO. 43. TP. 27S-Rg.-6W.W.M.  
Scale - 1" = 400' Oct. 1954.

JOHN MARKS PROPERTY

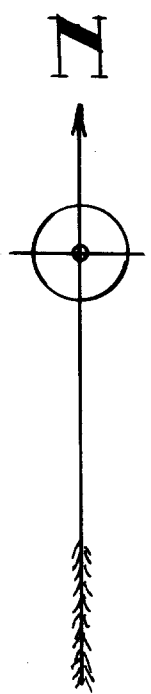
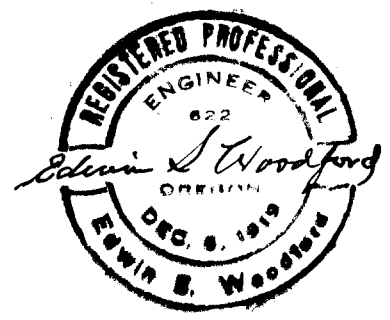
ED. MARKS PROPERTY

NW Cor. Jacob Jones D.L.C. No. 43 Tp. 27S-Rg. 6W.W.M.  
Stone Mon. (Found)

NE  
SW  
SE  
NW  
Cor. Jacob Jones D.L.C. No. 43 Tp. 27S-Rg. 6W.W.M.  
Fence Cor.  
Stone Mon. (Found)



FILED  
RECEIVED  
JAN 10 1956  
COUNTY SURVEYOR  
GOUGLAS COUNTY, ORE.



G. S. File No. 42/65A

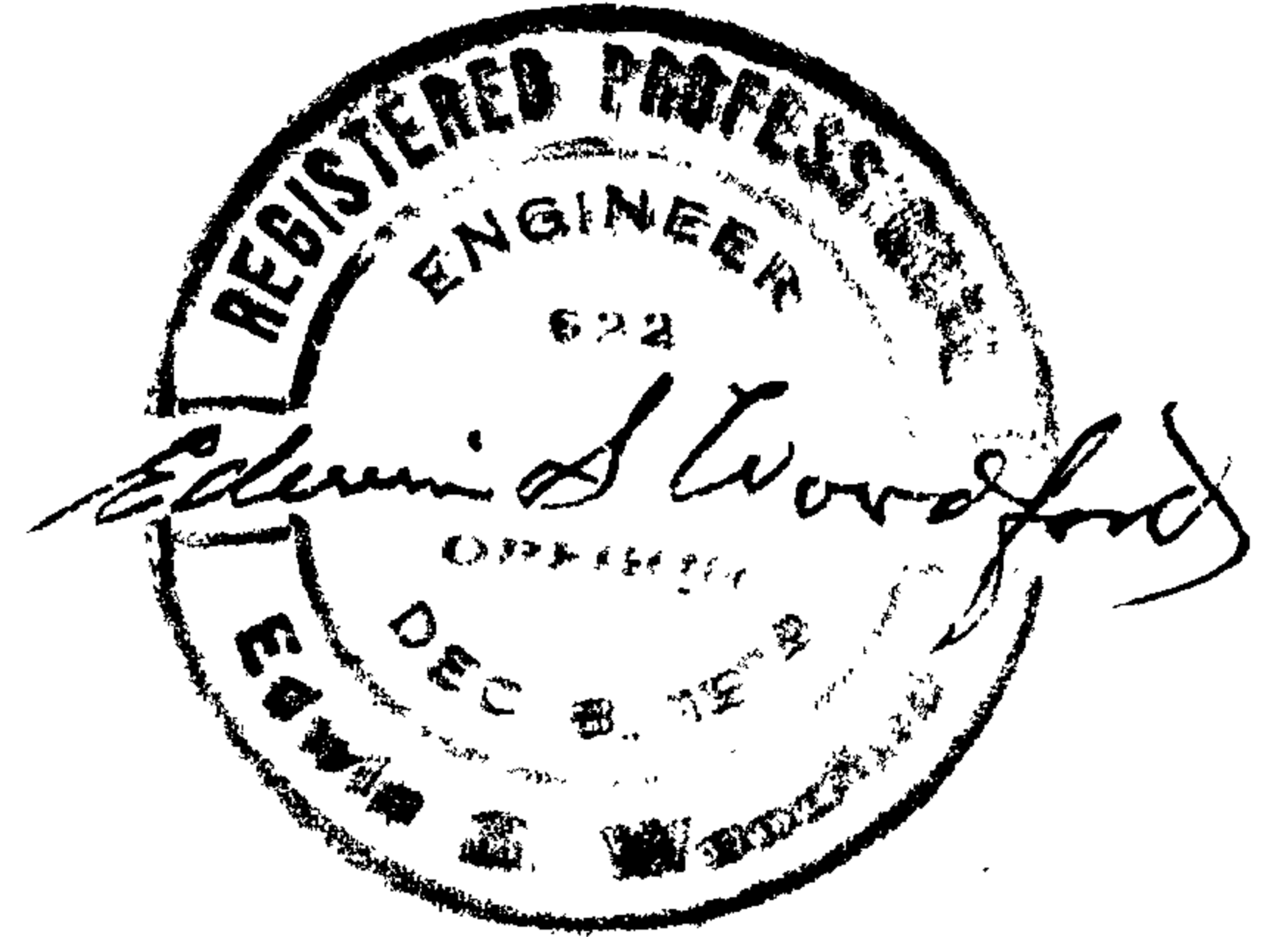
CS 42/65A

1

Woodford File No.  
129

EDWIN S. WOODFORD  
REGISTERED CIVIL ENGINEER  
- PHONE 3-7093

EDWIN S. WOODFORD  
439 West Hazel St.  
ROSEBURG, OREGON



SURVEYED FOR - C.E. & John Marks.  
Date of Survey - October - 1954.  
Object of Survey - Location & marking property  
line between C.E. & John Marks property.  
Location of Lands Surveyed: North line  
of Jacob Jones D.L.C. #43 Tp 27S - R9 - 6W W.M.  
Type of Map Filed - Cloth Tracing.

DESCRIPTION OF LAND SURVEYED

NE & NW Corners Jacob Jones D.L.C. #43  
Found and True line was established and  
marked as shown on Filed Map of Survey.

FILED  
RECEIVED

JAN 10 1956

COUNTY SURVEYOR  
DOUGLAS COUNTY, ORE.

C. S. File No. 42/65-1b