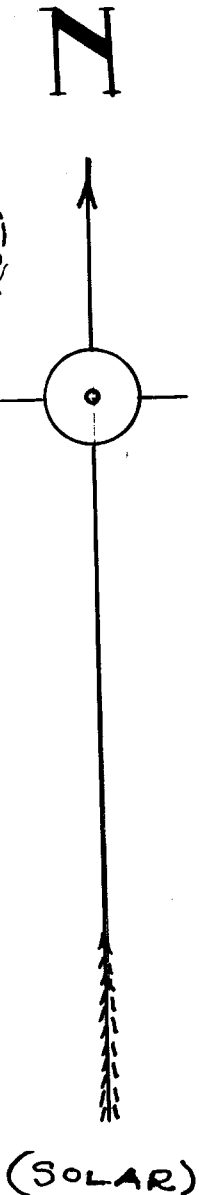
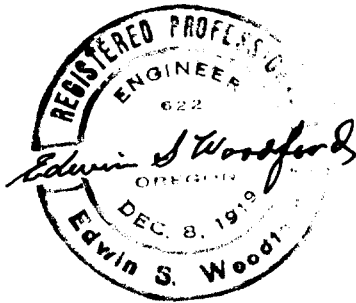
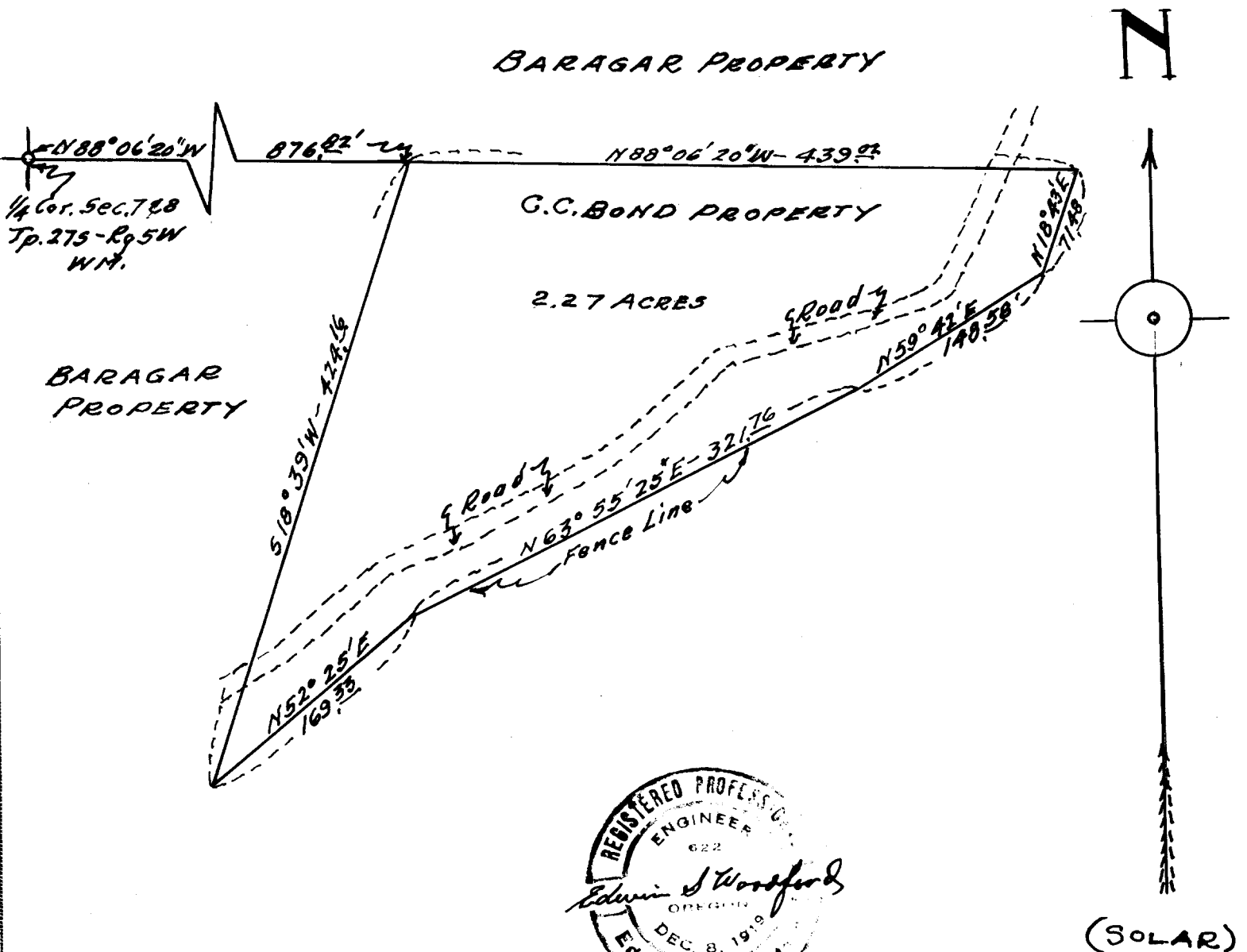


MAP
 SHOWING LAND LEASED
 IN
 SEC. 8 Tp. 27S - Rg. 5W WM.
 Scale - 1" = 100' November 1955.

COUNTY SURVEYORS FILE DATA
 DO NOT REMOVE FROM OFFICE



FILED
 RECEIVED

JAN 10 1956

COUNTY SURVEYOR
 DOUGLAS COUNTY, ORE.

C.S. File No. 42/64

①

JND

CS FILE FOLDER

CONTAINS

MORE

INFORMATION