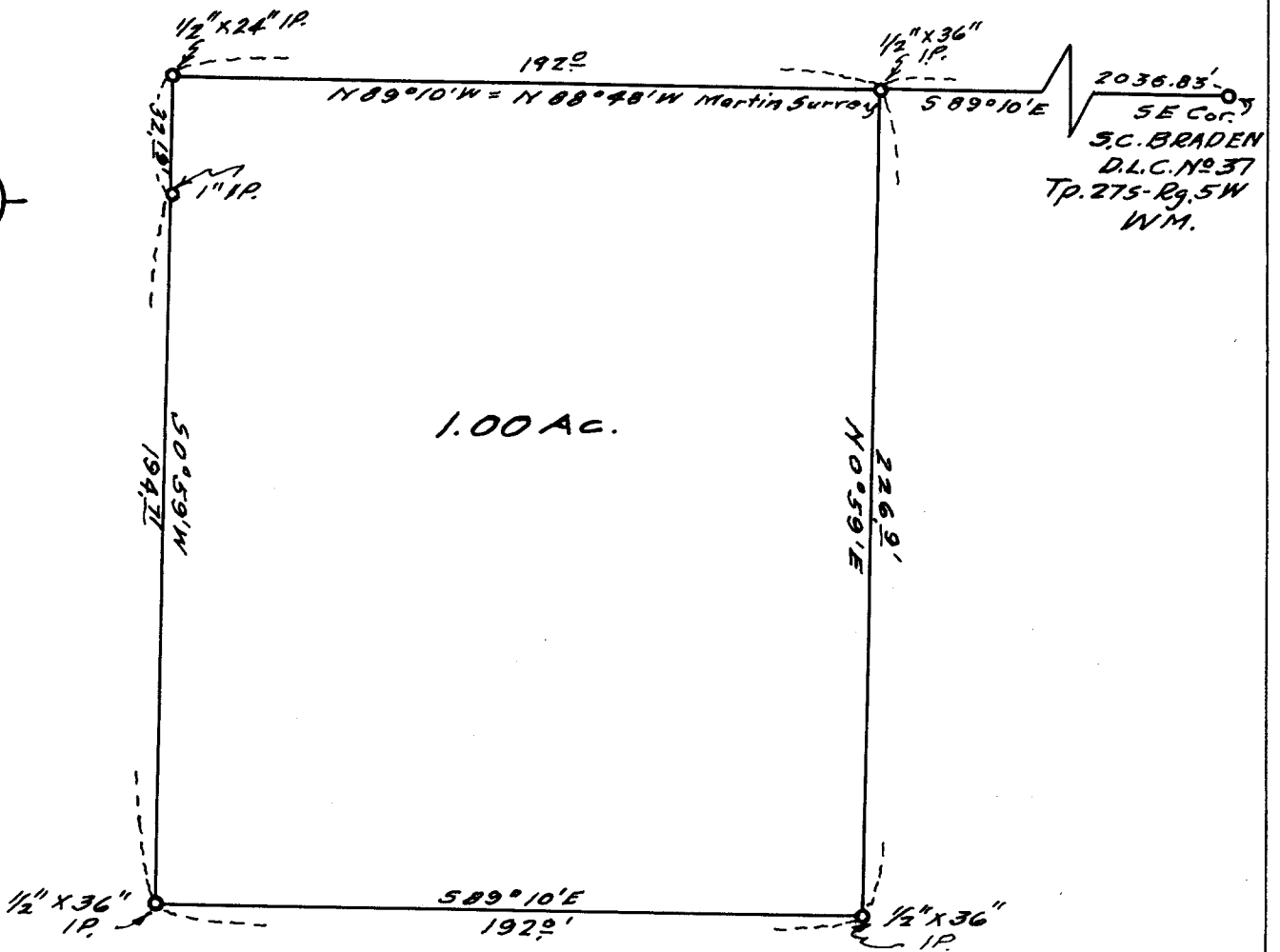


MAP
OF
LAND SURVEYED
FOR
WALLACE L MULL
SECTION 18 TP. 27S-RG. 5W WM.
SCALE-1"=50' AUGUST 1953.



FILED
RECEIVED

JAN 18 1956

COUNTY SURVEYOR
DOUGLAS COUNTY, ORE.

COUNTY SURVEYORS FILE DATA
DO NOT REMOVE FROM OFFICE

C. S. File No. 42/63-A

CS FILE FOLDER

CONTAINS

MORE

INFORMATION