

COUNTY SURVEYORS FILE DATA
DO NOT REMOVE FROM OFFICE

MAP

SHOWING LANDS SURVEYED

FOR
C.E. DICKIE

IN
SECTION 30 T₃₀S-R₆W W.M.

SCALE - 1" = 100'

OCTOBER-1954.

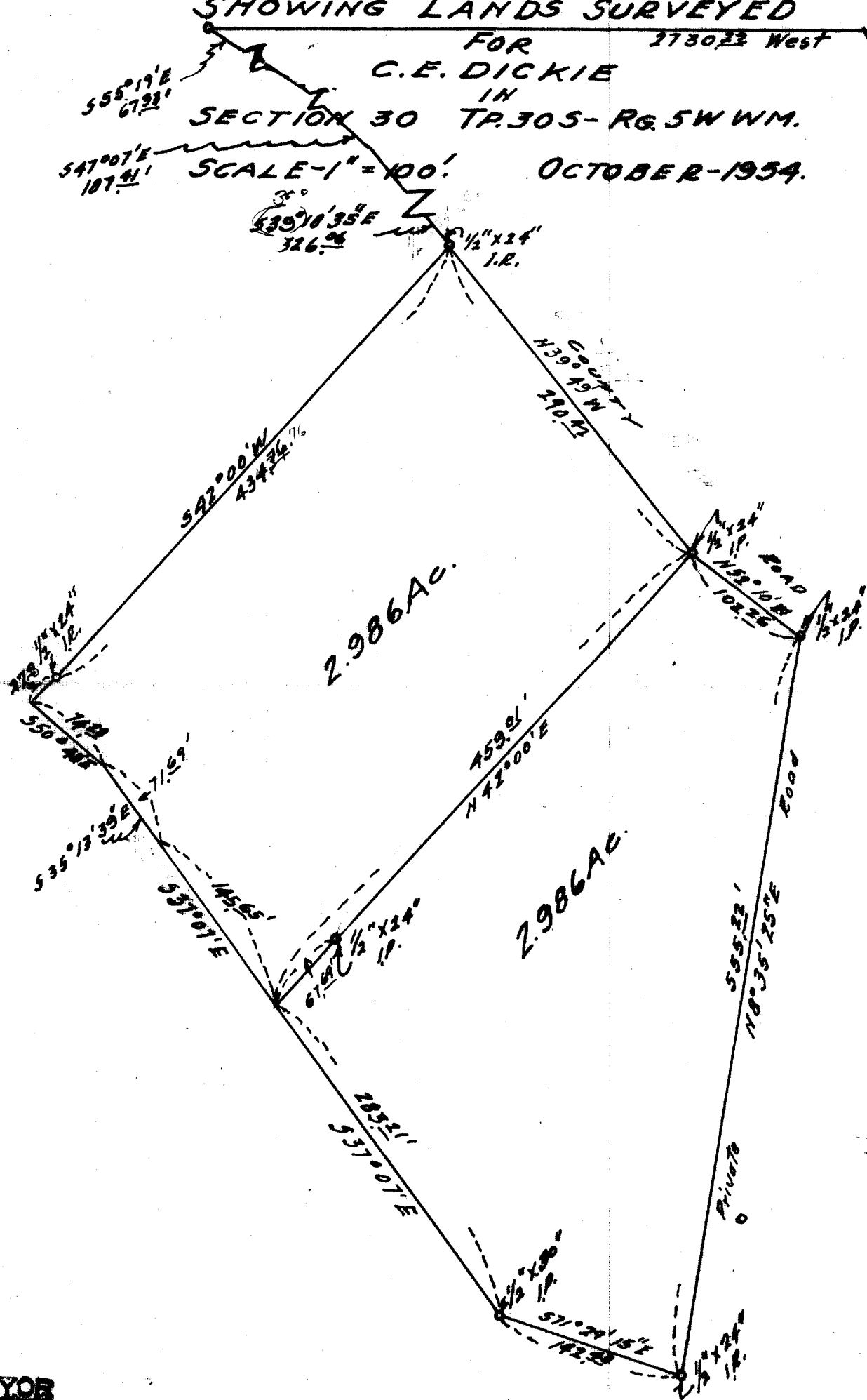
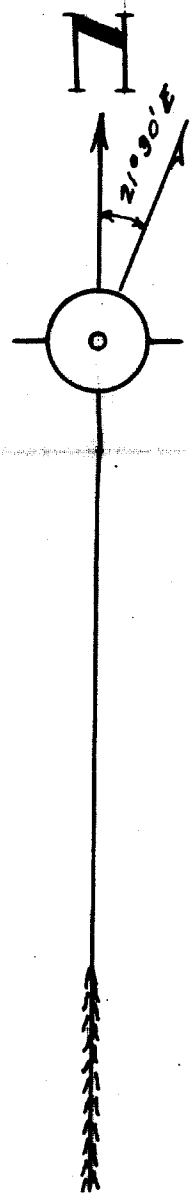
2730.22 West

555°19'E
67.92'
547°07'E
107.41'

38°
539°10'35"E
326.06'
1/2" x 24" I.R.

North
1344.26'

30 29
31 32
Tp. 30S - R₆W
W.M.



FILED
RECEIVED

JAN 18 1956

COUNTY SURVEYOR
DOUGLAS COUNTY, ORE

AWB

C.S. File No. 42/62-24N

SURVEYS

DESIGNS

ESTIMATES

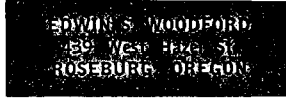
APPRAISALS

WOODFORD FILE NO.

133

EDWIN S. WOODFORD
REGISTERED CIVIL ENGINEER

PHONE 3-7093



SURVEYED FOR - C. E. DICKIE

DATE OF SURVEY - OCTOBER, 1954

OBJECT OF SURVEY - LAY OUT TRACT OF LAND AND DIVIDE
IT IN HALF

LOCATION OF LANDS - SEC. 30, T₃₀S R₅W, W.M.

TYPE OF MAP FILED - CLOTH TRACING

DESCRIPTION

SEE ACCOMPANYING SHEET

(SEE CS FOLDER FOR DESCRIPTION

FILED
RECEIVED

JAN 18 1956

COUNTY SURVEYOR
DOUGLAS COUNTY, ORE.

C. S. File No. 42/62-2b