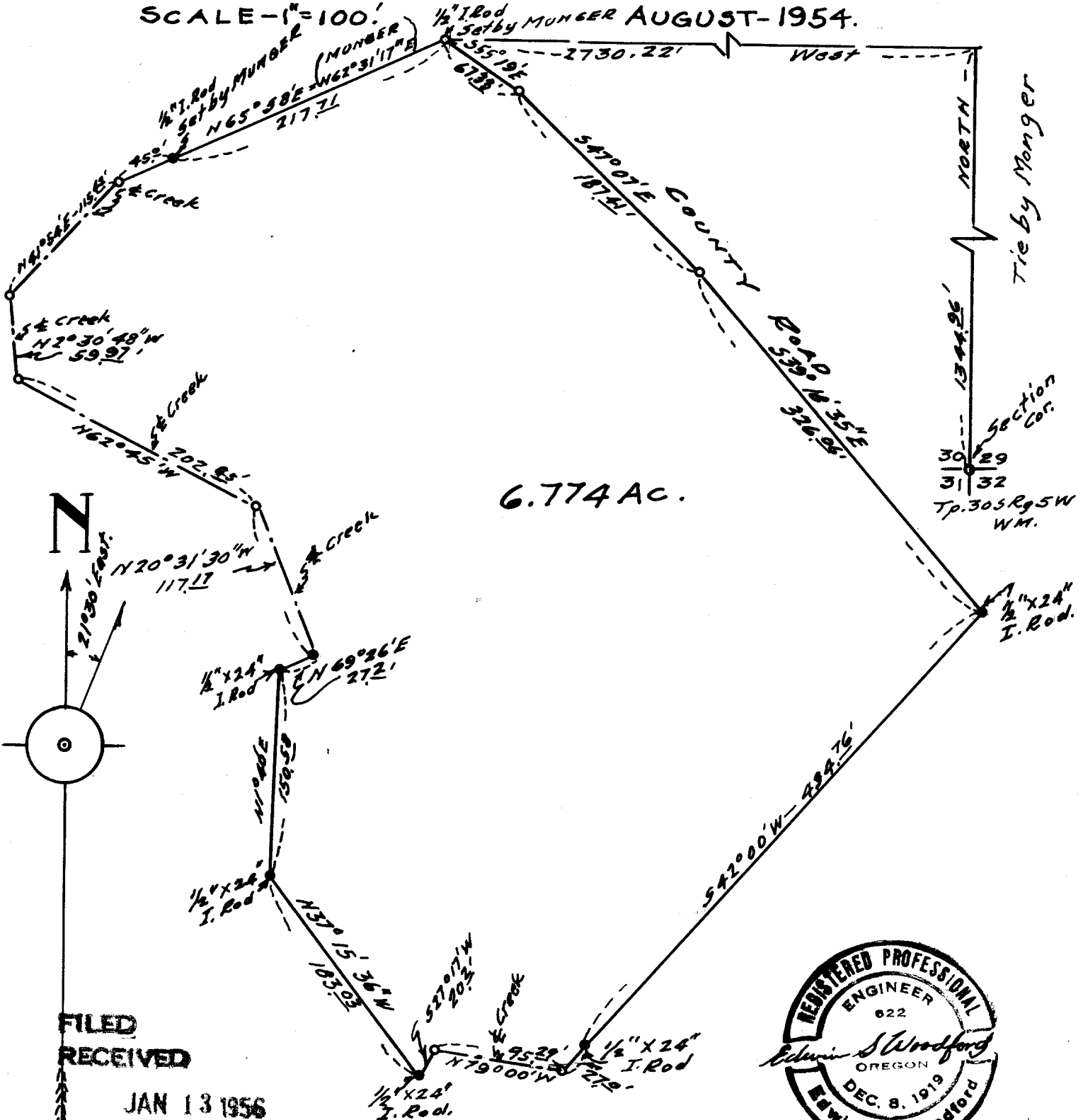


MAP  
SHOWING  
LAND SURVEYED  
FOR  
C.E. DICKIE

COUNTY SURVEYORS FILE DATA  
DO NOT REMOVE FROM OFFICE

IN  
SECTION 30 TP. 30S-RG. 5W WM.

SCALE - 1" = 100'  
MUNGER AUGUST-1954.



6.774 AC.

Section Cor.  
30 29  
31 32  
Tp. 30S Rg. 5W  
WM.



FILED  
RECEIVED

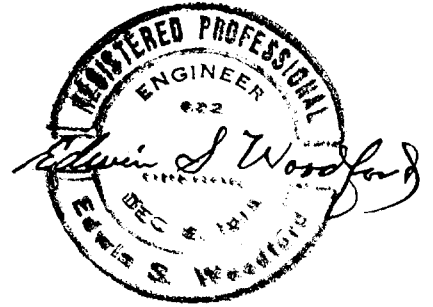
JAN 13 1956

COUNTY SURVEYOR  
DOUGLAS COUNTY, ORE.

Woodford File No.  
121.

EDWIN S. WOODFORD  
REGISTERED CIVIL ENGINEER

100 PARKER - PHONE 3-7093



SURVEYED FOR - C.E. DICKIE

Date of Survey - August 1954

Object of Survey - Survey 6.774 Ac Tract.

Location of Lands Surveyed Section 30 T<sub>30</sub>S R<sub>9</sub>SW  
WM.

Type of Map Filed - Cloth Tracing.

DESCRIPTION OF LAND SURVEYED.

See accompanying sheet.

( SEE FOLDER FOR MORE INFO )

FILED  
RECEIVED

JAN 13 1956

COUNTY SURVEYOR  
DOUGLAS COUNTY, ORE.

C. S. File No. 42/606