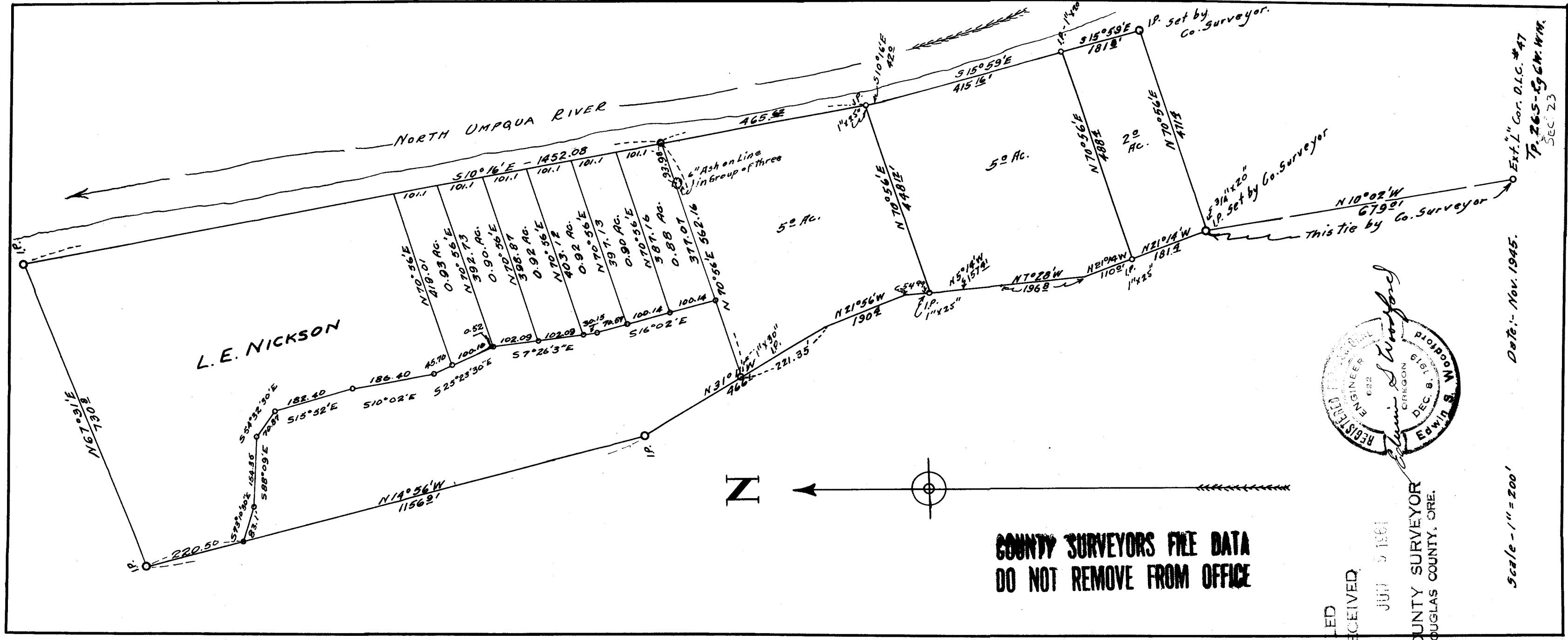
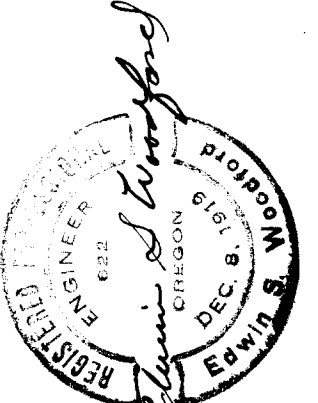


CS 42/59-21



C.S. 42/592



FILED
RECEIVED
JUL 5 1961
COUNTY SURVEYOR
DOUGLAS COUNTY, ORE.

Scale - 1" = 200'
Date: Nov. 1945.

Ext. L. Cor. D.I.C. #47
TP 265-596M. MM.
SEC. 23

CS FILE FOLDER

CONTAINS

MORE

INFORMATION