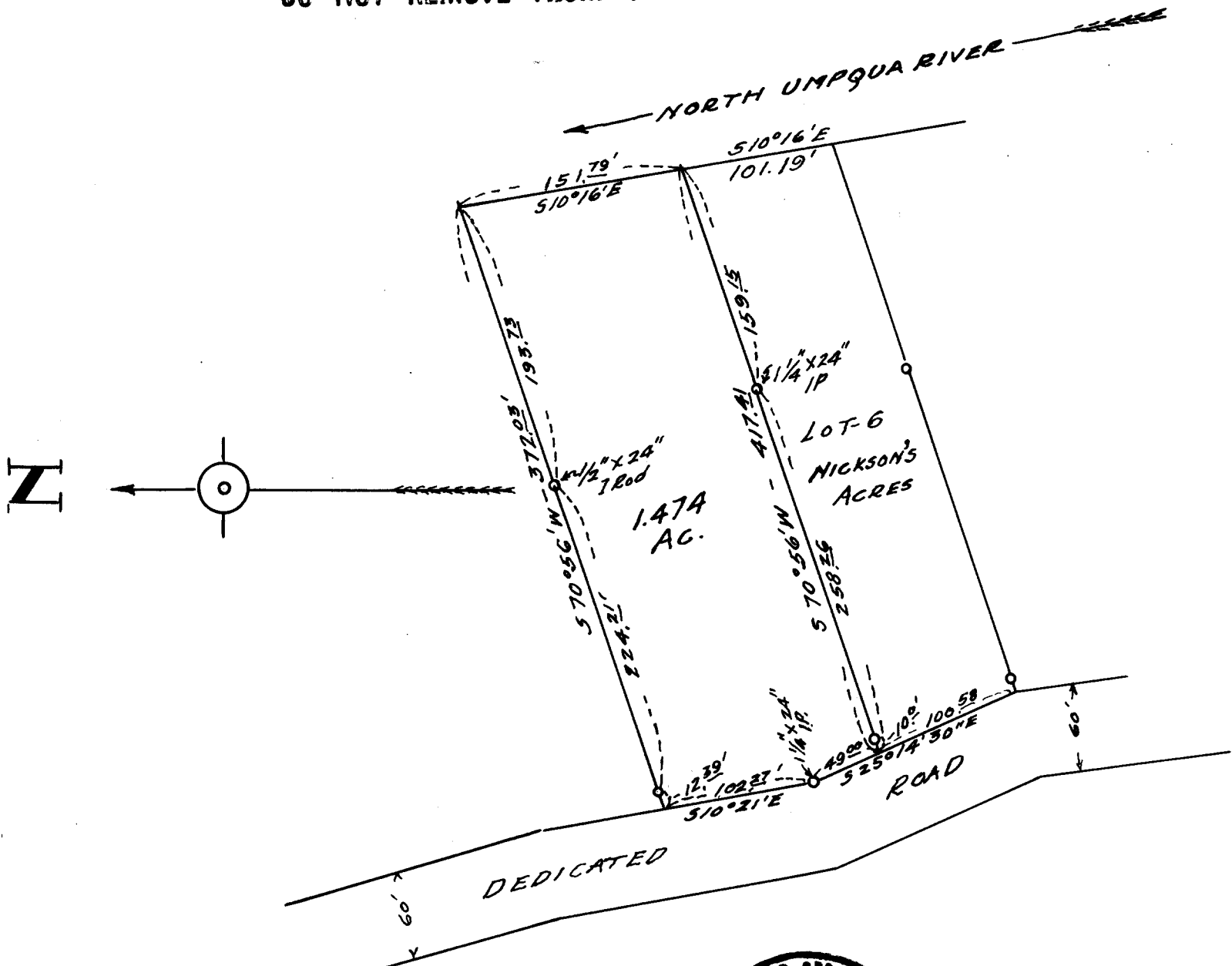


MAP
 SHOWING LAND SURVEYED
 FOR
 L. E. NICKSON
 IN
 SEC. 23 TP. 26S-RG. 6W WM.
 Scale-1"=100' — Nov. 1954.

COUNTY SURVEYORS FILE DATA
 DO NOT REMOVE FROM OFFICE



FILED
 RECEIVED

JAN 13 1956

COUNTY SURVEYOR
 DOUGLAS COUNTY, ORE.



CS FILE FOLDER

CONTAINS

MORE

INFORMATION