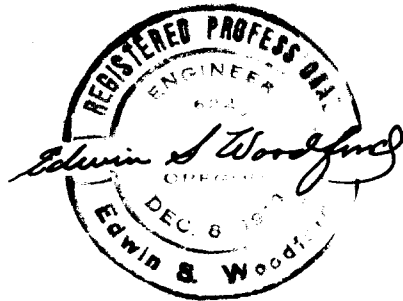
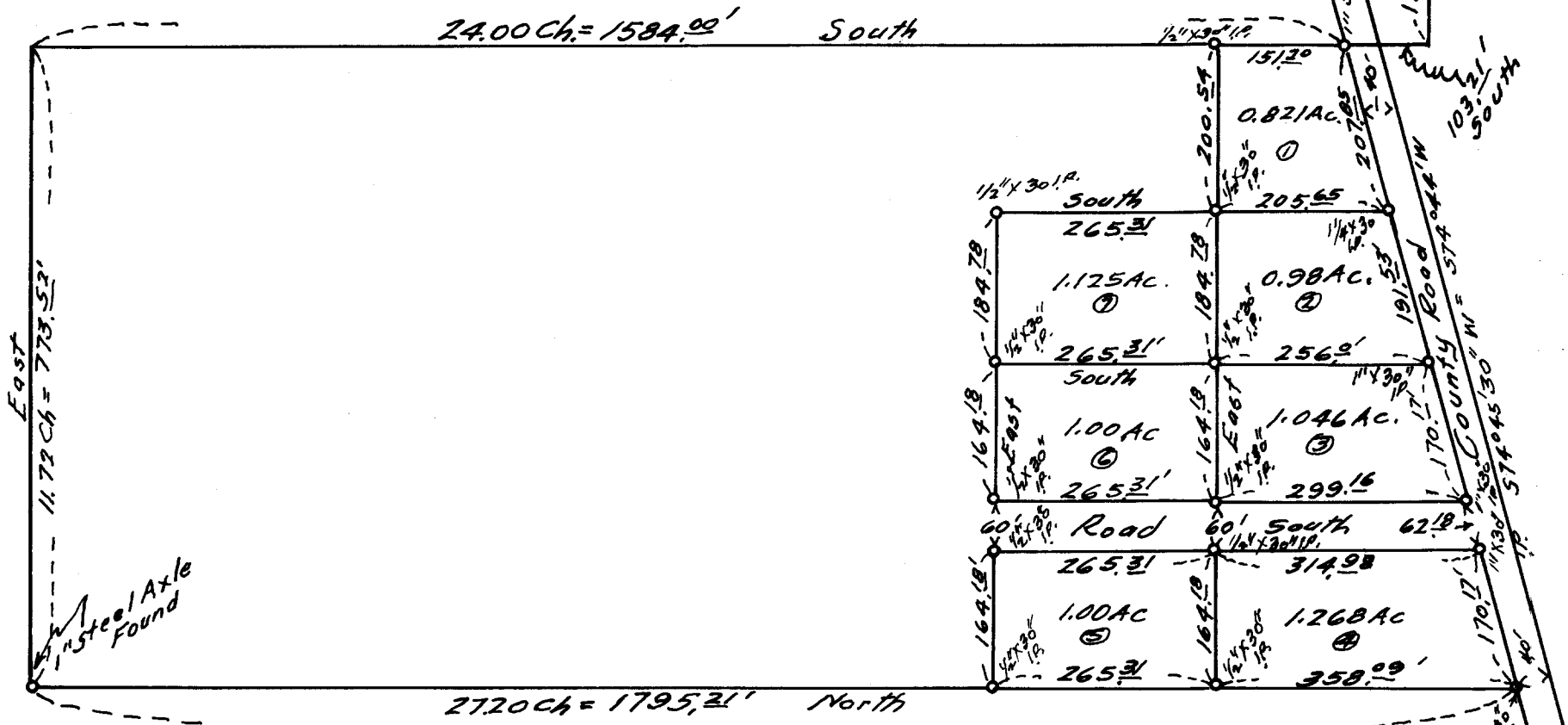


COUNTY SURVEYORS FILE DATA
DO NOT REMOVE FROM OFFICE

MAP
SHOWING LAND SURVEYED
FOR
J.L. AIKINS
SECTION 26 Tp. 305-Rg. 6W WM.
Scale - 1" = 200' MARCH 1955.

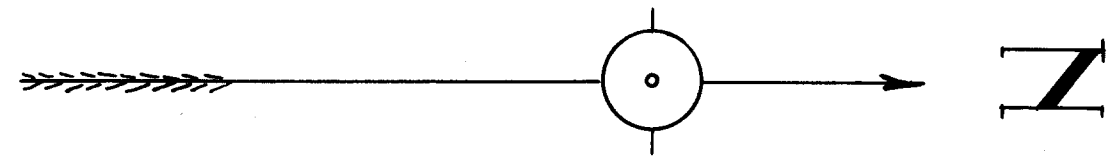
S.E. Cor. I.B. NICHOLS
D.L.C. #44
Tp. 305-Rg. 6W WM.



FILED
RECEIVED

JAN 13 1955

COUNTY SURVEYOR
DOUGLAS COUNTY, ORE.



C. S. File No. 42/58

AW

CS FILE FOLDER

CONTAINS

MORE

INFORMATION