

COUNTY SURVEYORS FILE DATA
DO NOT REMOVE FROM OFFICE

SECTION 14 TOWNSHIP 22 S. RANGE 5 W.

DOUGLAS COUNTY OREGON

MARCH 1955

Scale 8 in = 1 mile

B. H. McGILLICUDDY

SECTION CORNER DATA

- ① Recorded corner of sections 10-11-14-15
- ② Recorded 1/4 corner bet. sections 11 and 14 (Replaced post with iron pipe)
- ③ Recorded corner of sections 11-12-13-14
- ④ Recorded 1/4 corner bet. sections 14-15
- ⑤ Center of section 14 - Set 1" x 36" iron pipe from which bears
a 32" Fir N50°W 25⁸ ft. (nail in tree)
a 12" Fir S50°E 28° ft. (nail in tree)
- ⑥ Established 1/4 corner bet sections 13 and 14 - Set 1/2" x 30" iron pipe from which bears
28" Apple tree N41°41'E 143⁴³ ft. (nail in tree)
24" Oak S 23°35'W 189⁴⁵ ft. (nail in tree)
Light pole N 9°18'W 347¹⁹ ft.
Light pole S 31°03'E
- ⑦ Recorded corner of sections 14-15-22-23
- ⑧ 1/4 corner bet. sections 14 and 23. Set 1" x 30" iron pipe in open prairie - no bearing trees.

Variation 20°19' E



Dwn. B.H.M

SECTION CORNER DATA

- ⑨ Junction of board fence going East on wire fence going North and South. Evidence of old bearing trees in NW, NE and SE quadrants.

Set 3/4" x 24" iron pipe at intersection of fences from North, South and East.

Fir burned out stub N53°W 14 ft.

Fir burned out stub S82°E 33 ft.

Fir burned out stub S19°W 53 ft.

F.D. McMichael disposes to say that he has always accepted said fence corner as above mentioned

Floyd McMichael (seal)

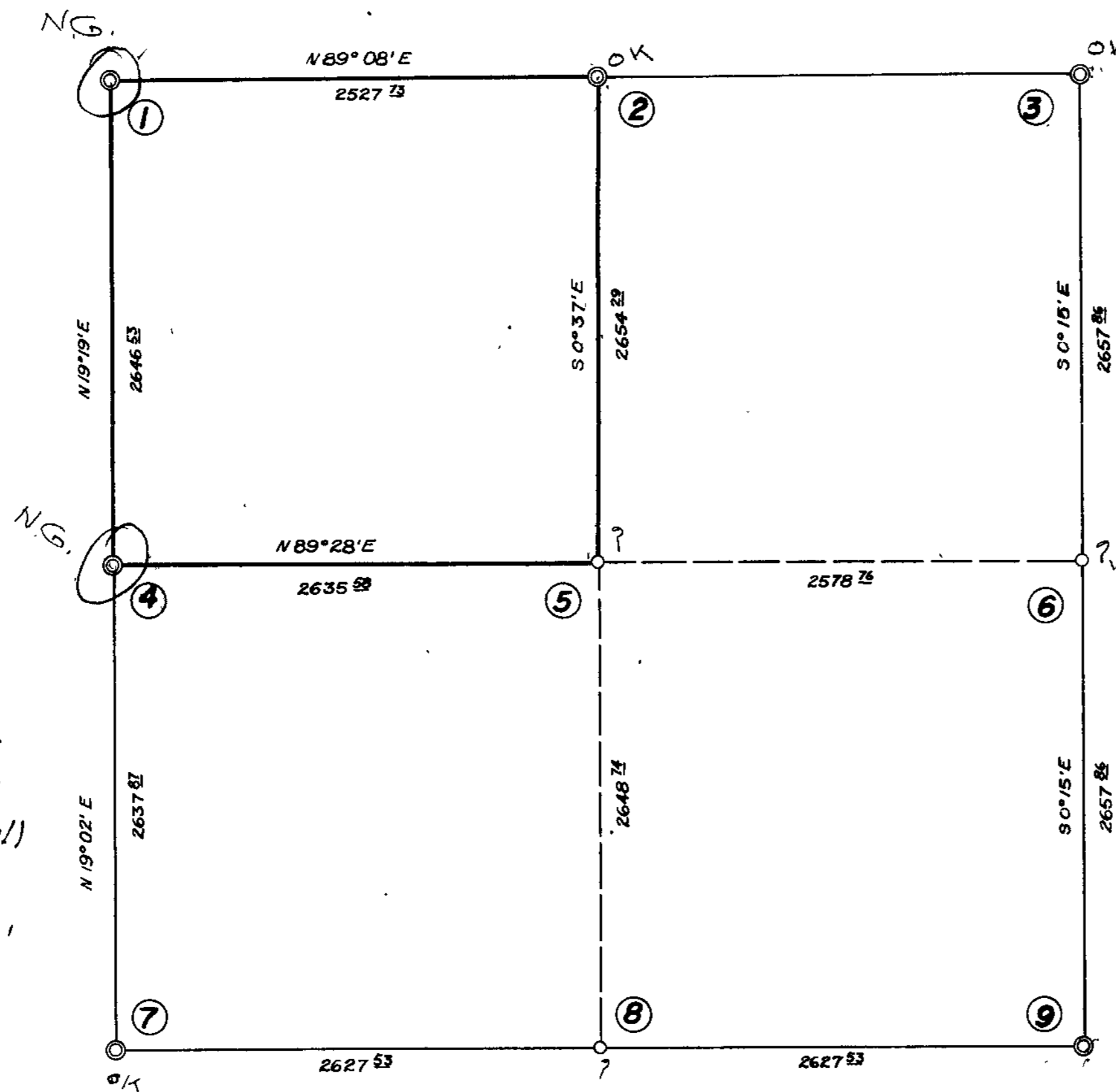
Witnessed in presence of

Leo J. Martin

Larry L. Adams

L. James Brady

B. H. McGillicuddy



COUNTY SURVEYORS FILE DATA
DO NOT REMOVE FROM OFFICE

QUESTIONABLE WORK - Search for corners shown as found did not substantiate this work - See CS file 49/59

C.S. File No. 42/32