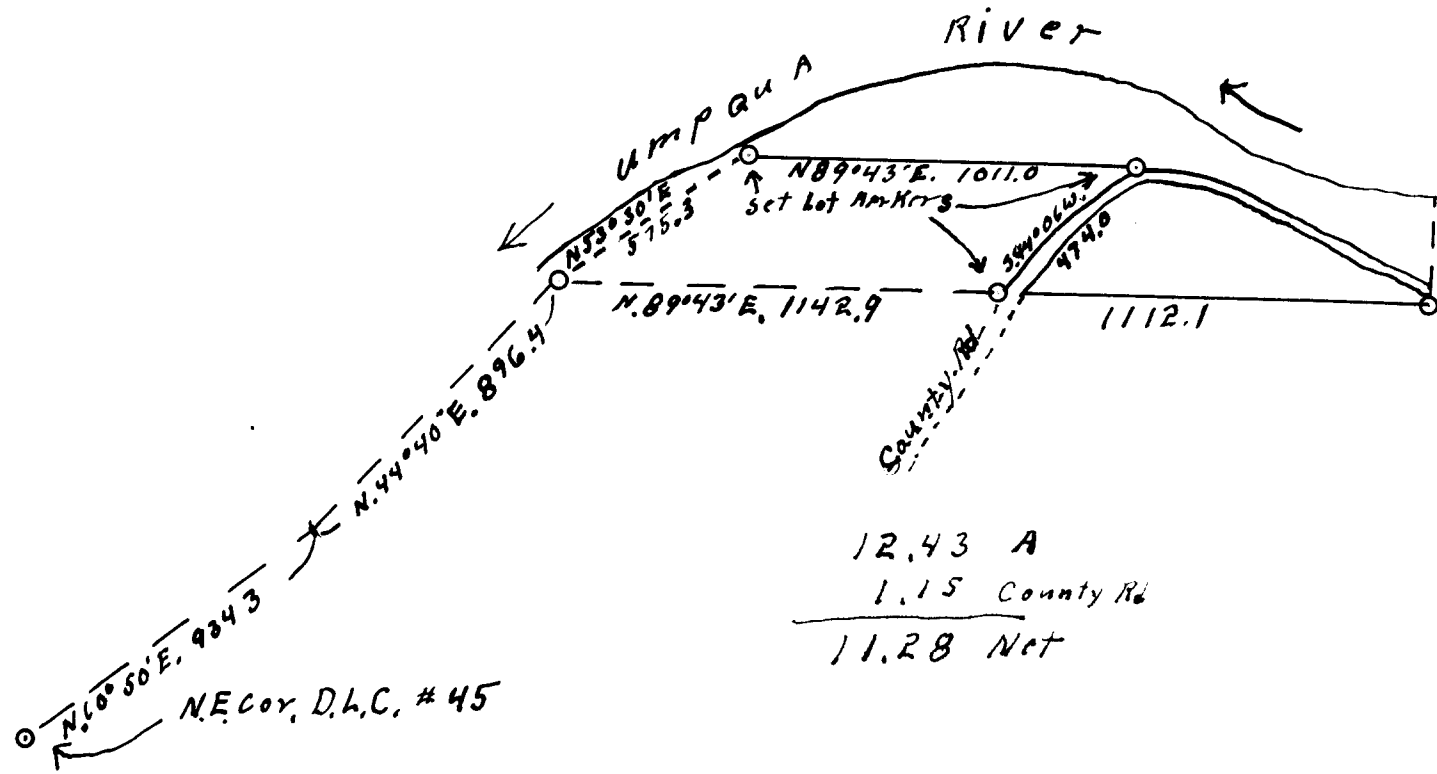


FILED
RECEIVED

AUG 22 1958

COUNTY SURVEYOR
DOUGLAS COUNTY, ORE.



12.43 A
1.15 County Rd

11.28 Net

Sect. 21, T22S. R8W W.M. D.L.C. # 44

Survey for Deed Description 1958.

For Walter Haines ELKTON, Oregon.

REGISTERED
OREGON
LAND SURVEYOR

Wilford N. Haines

MAY 7 1948
WILFORD N. HAINES
239

COUNTY SURVEYORS FILE DATA
DO NOT REMOVE FROM OFFICE

O.S. FILE No. 42/30