

LILA U. CHAMBERLIN PARCELS · MYRTLE CREEK · OREGON

SECTION 22 · T29S · R5W · W.M.

NORTH SPRUCE STREET

COUNTY ROAD

COUNTY SURVEYORS FILE DATA
DO NOT REMOVE FROM OFFICE

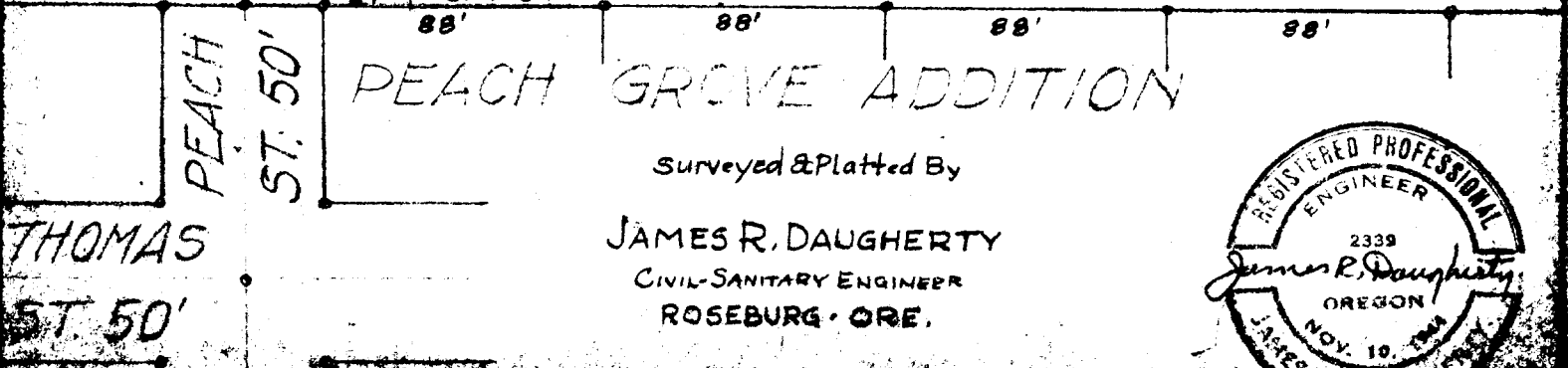
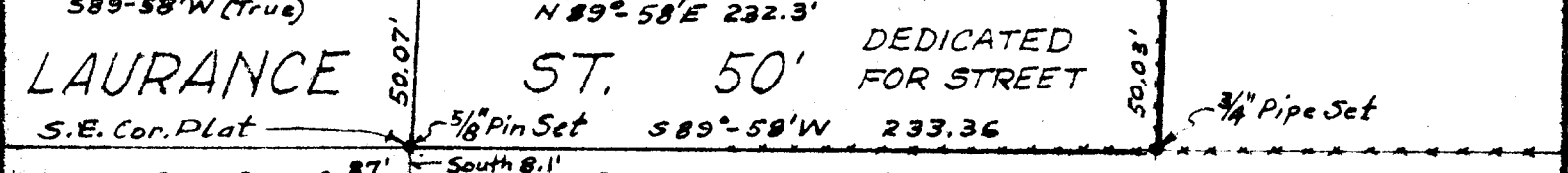
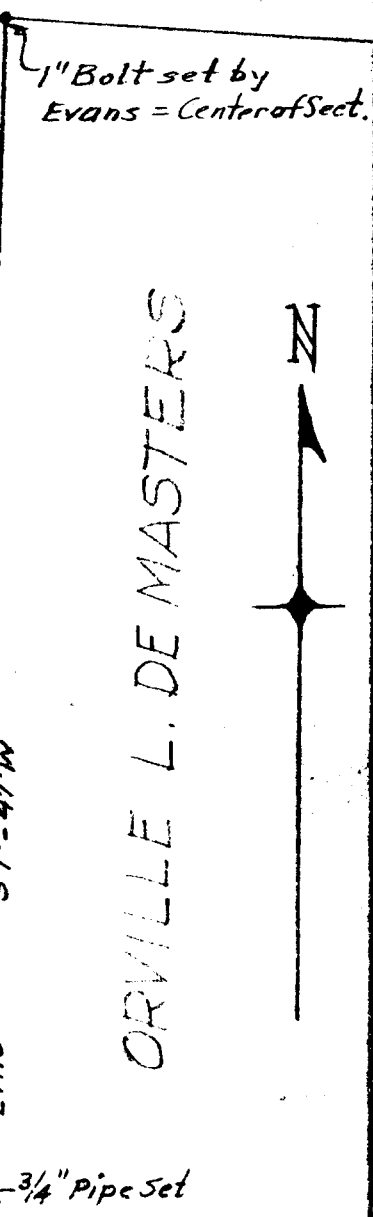
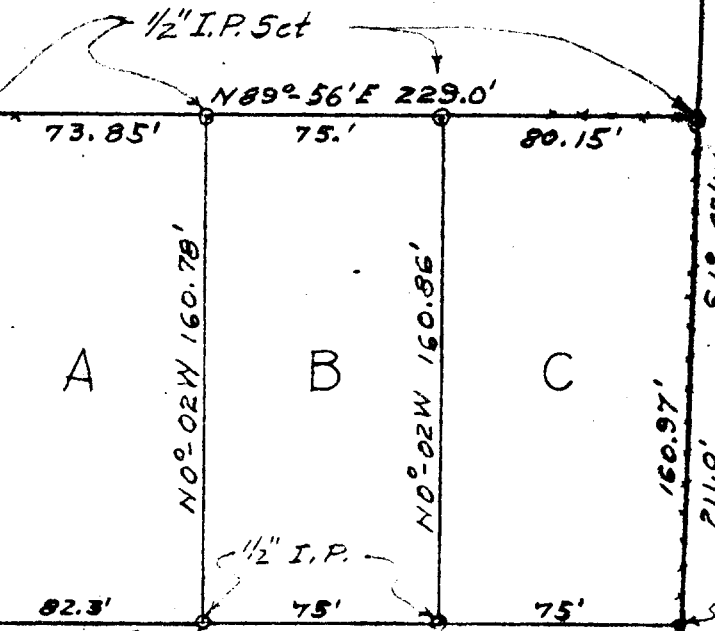
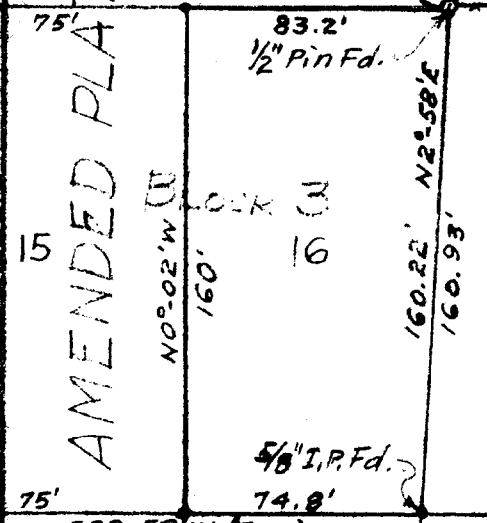
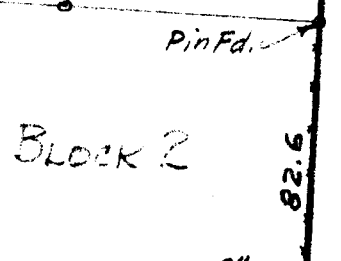
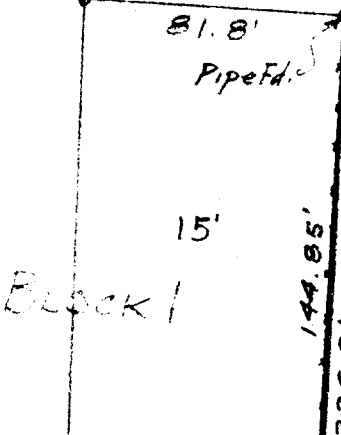
1" Bolt set by
Evans = Center of Sect.

LILA U. CHAMBERLIN

ORVILLE L. DE MASTERS



AMENDED PLAT OF LAURANCE SUBDIV.



Surveyed & Platted By
JAMES R. DAUGHERTY
CIVIL-SANITARY ENGINEER
ROSEBURG · ORE.



Scale 1" = 60'