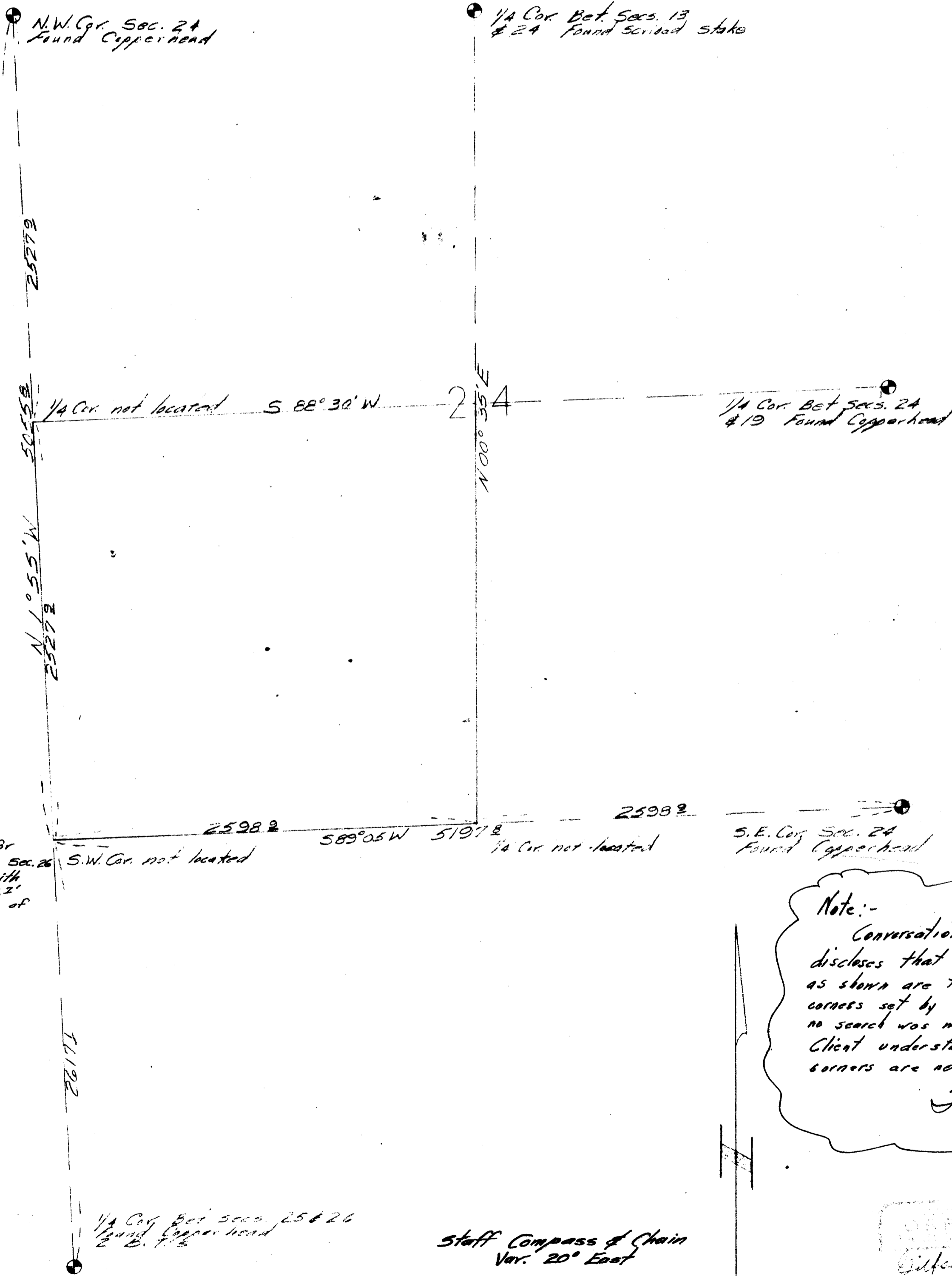


SURVEY for YONCALLA LBR. CO.

IN
Section 24; Twp. 23 S.; Range 6 W.W.M.
Scale: 1" = 500.0' August 1955



Fd scribed 1/4 Cor. for
N.W. Cor. of N.W. 1/4; N.W. 1/4 Sec. 26
4179.2' S 89° 05' W. Fd. I.P. with
Copperhead not driven 5477.2'
S 89° 05' W at intersection of
blazed lines.

Note:-

Conversation with Gardner
discloses that the "Copperheads"
as shown are the unapproved
corners set by U.S.G.L.D. and that
no search was made for originals.
Client understands that these
corners are not legal at this time.

Attesty 6/21/56.

FILED
RECEIVED

AUG 30 1955

COUNTY SURVEYOR
DOUGLAS COUNTY, ORE.

Staff Compass & Chain
Var. 20° East

